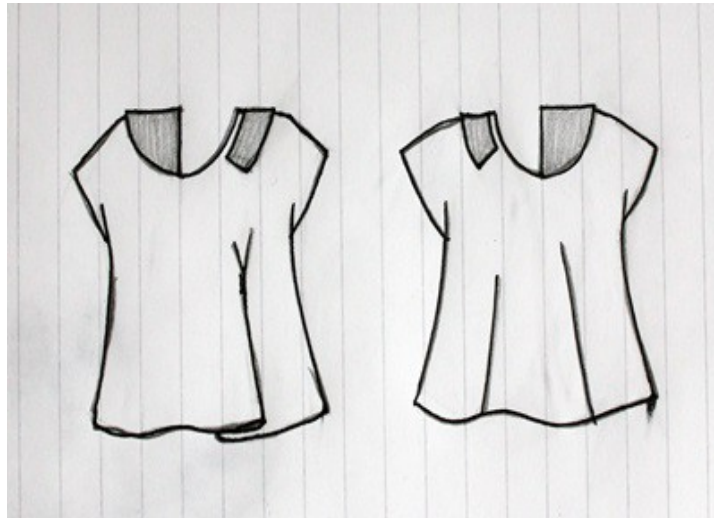


Blouse „ANTWOORD“



Women-Sizechart

Sizes Bodyheight			Bust circumference		Waist circumference		Hip circumference	
Normal sizes	Long sizes	Short sizes	cm	inch	cm	inch	cm	inch
162- 171cm	over 172cm	under 161cm						
Size.34	Size.68	Size.17	82cm	32 ½	66cm	26	89cm	35
Size.36	Size.72	Size.18	85cm	33 ½	69cm	27½	93cm	36 ½
Size.38	Size.76	Size.19	88cm	34 ¾	72cm	28 ½	97cm	38
Size.40	Size.80	Size.20	92cm	36 ¼	76cm	30	101cm	39 ¾
Size.42	Size.84	Size.21	96cm	37 ¾	80cm	31 ½	105cm	41 ¼
Size. 44	Size.88	Size.22	100cm	39 ½	84cm	33	109cm	43
Size.46	Size.92	Size.23	106cm	41 ¾	90cm	35 ½	114cm	44 ¾
Size.48	Size.96	Size.24	112cm	44	96cm	37 ¾	119cm	46 ¾

The Bustcircumference determines the size for coats, jackets, shirts, dresses, blouses, tops, vests...!

The Hipcircumference determines the size for pants and skirts !

Pattern pieces

Shirt fabric

- Front piece + Back piece – 1x on fold

Interfacing

- Facing neckline - 1x complete
- Collar – 2x complete

Material requirements

Material	Sizes 34-40	Sizes 42-48	Sizes 17-20	Sizes 21-24	Sizes 68-80	Sizes 84-96
Outer fabric	1,5m					
Interfacing	0,2m					
Optional: Bias tape for seam finish						

Fabric Recommendation

This design works best in shirting and blouse fabrics with a slight structure and a soft drape.

The fabric should provide enough stability for the collar facing piece

Recommended Fabrics

Cotton-Cottonmix

- enough structure for blouse collars
- soft and fluid drape
- ideal for sommer blouses and shirts

Medium-Weight Crêpe

- adds depth and movement
- less wrinkles than pure viscose

Tencel / Lyocell

- softer and more fluid than classic cotton poplin
- more structured than viscose
- creates elegant and clean-looking

Fine Cotton Satin

- smooth and refined surface

- slight body and structure
- feminine yet modern appearance

Cotton Poplin

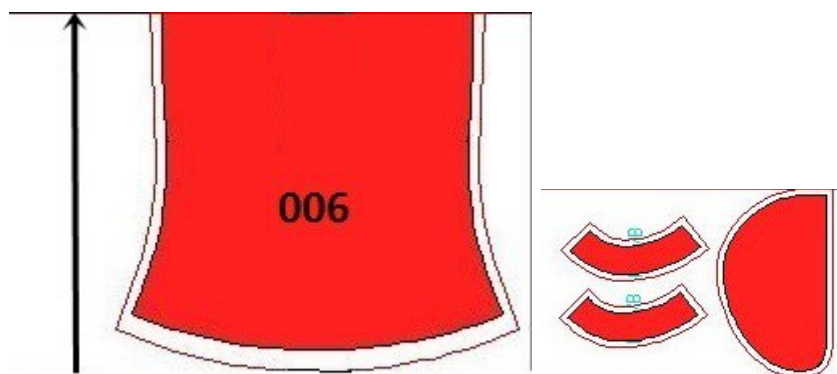
- ideal for crisp and graphic folds
- has more body and structure
- it appears more sculptural and can stand away slightly from the body

Original Fabric:

The original sample was made in lightweight cotton poplin and satin as contrast fabric.

Layplan

- Seitennähte haben 1,5cm Nahtzugaben
- Alle andere Nähte haben 1cm Nahtzugaben



Stoff im Bruch/ Fabric on Fold 1,4m

Sewing steps

Step1: Preparation

- Fuse interfacing to the collar and facing piece
- Transfer all markings onto the fabric.
- Check my helpful Youtube-Tutorials : <https://www.youtube.com/@Okistyle-sewing>
- There is a Youtube video tutorial for this blouse: <https://youtu.be/ZXlbcYmBXV4>

Step2: Neckline

Preparing the Neck Facing

- The outer edge of the neck facing is prepared first to ensure a clean and easy finish during the following construction steps.
- Place the bias strip right sides together along the outer edge of the facing and sew it in place with a 1 cm (3/8") seam allowance.



- Fold the bias strip away from the facing and understitch the seam allowance.



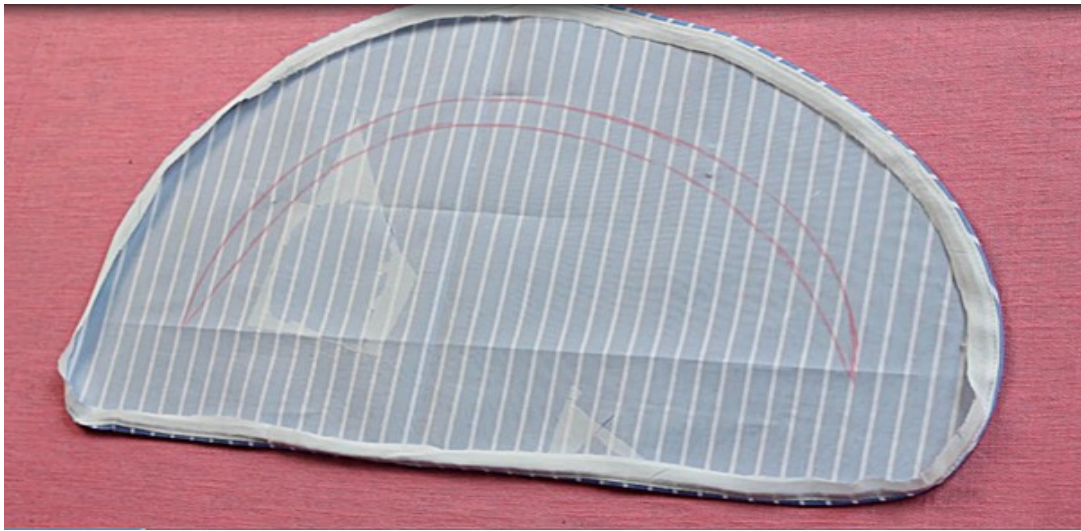
- Carefully trim the seam allowances.



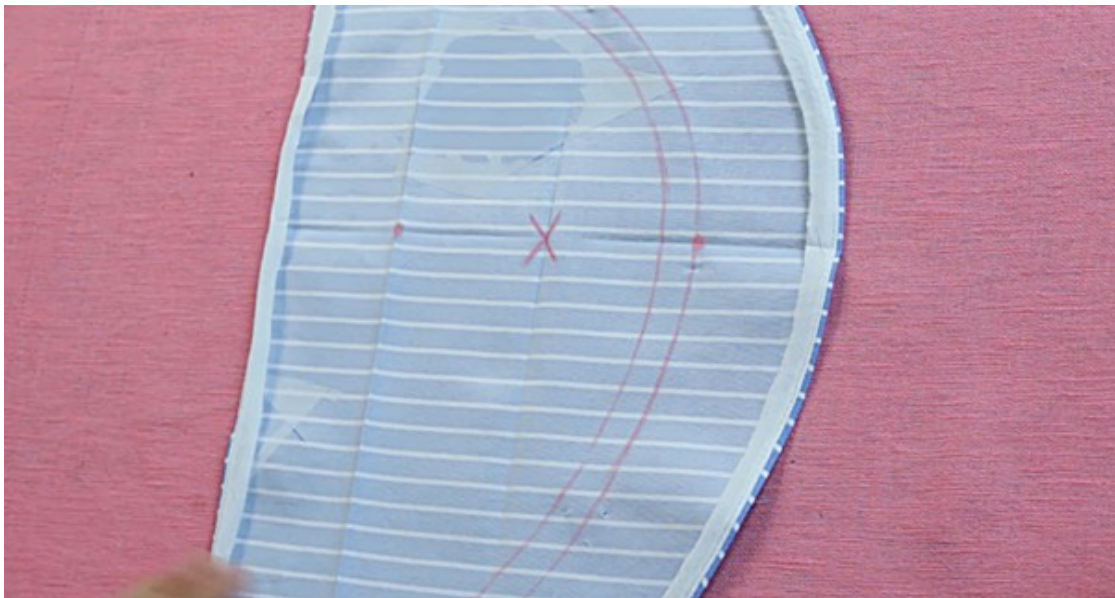
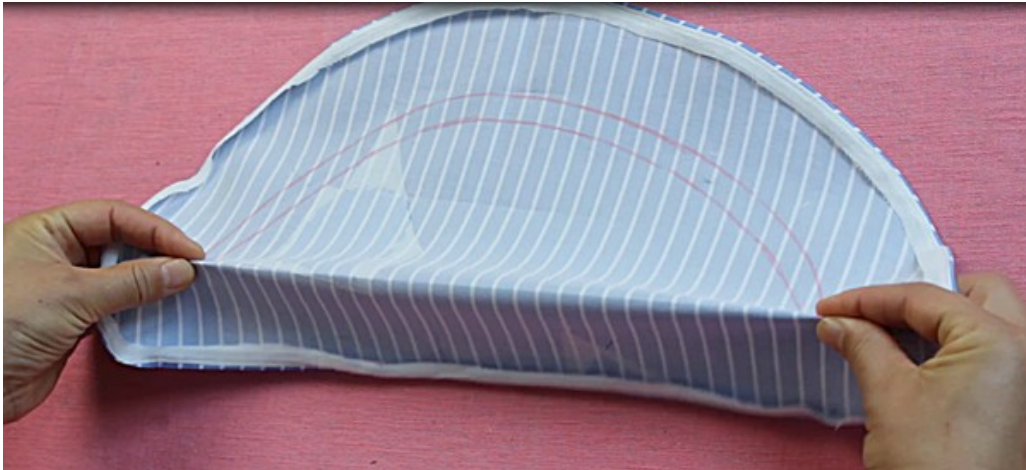
- Turn the bias strip to the wrong side and press the edge well. Allow the edge to roll slightly to the inside for a neat finish.



- Trim the bias strip to a finished width of 1 cm (3/8").
- Mark the neckline opening on the wrong side of the facing.

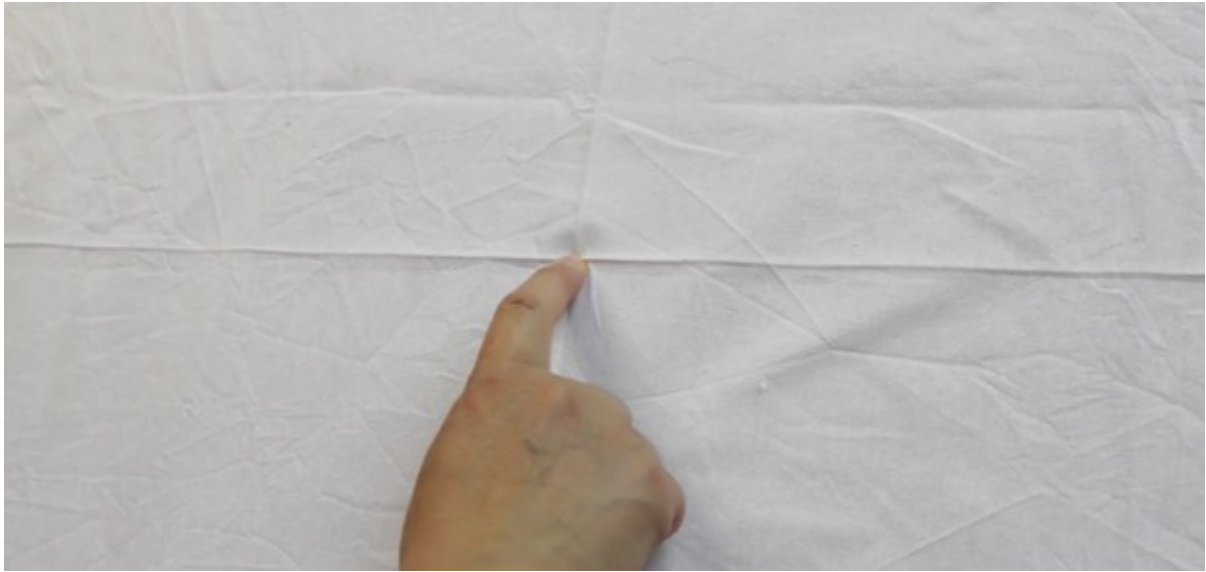


- Mark the center point of the facing. This point lies on the shoulder line midway between the two neckline points.



Attaching the Neck Facing

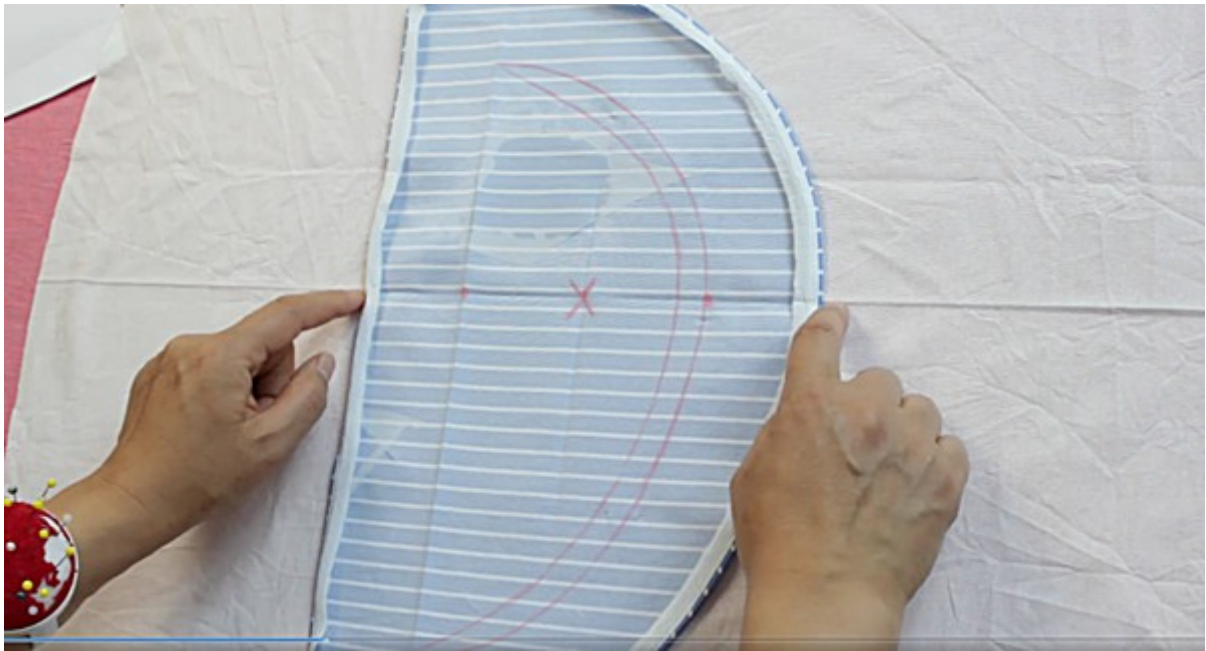
- Mark the center point of the neckline opening on the right side of the bodice. This point lies at the midpoint of the shoulder line.



- Place the neck facing right sides together on the bodice and pin in place, matching the marked center points and shoulder lines.



- Stitch along the marked neckline opening.



- Cut out the neckline opening close to the stitching line, taking care not to cut through the stitching at the two corners.



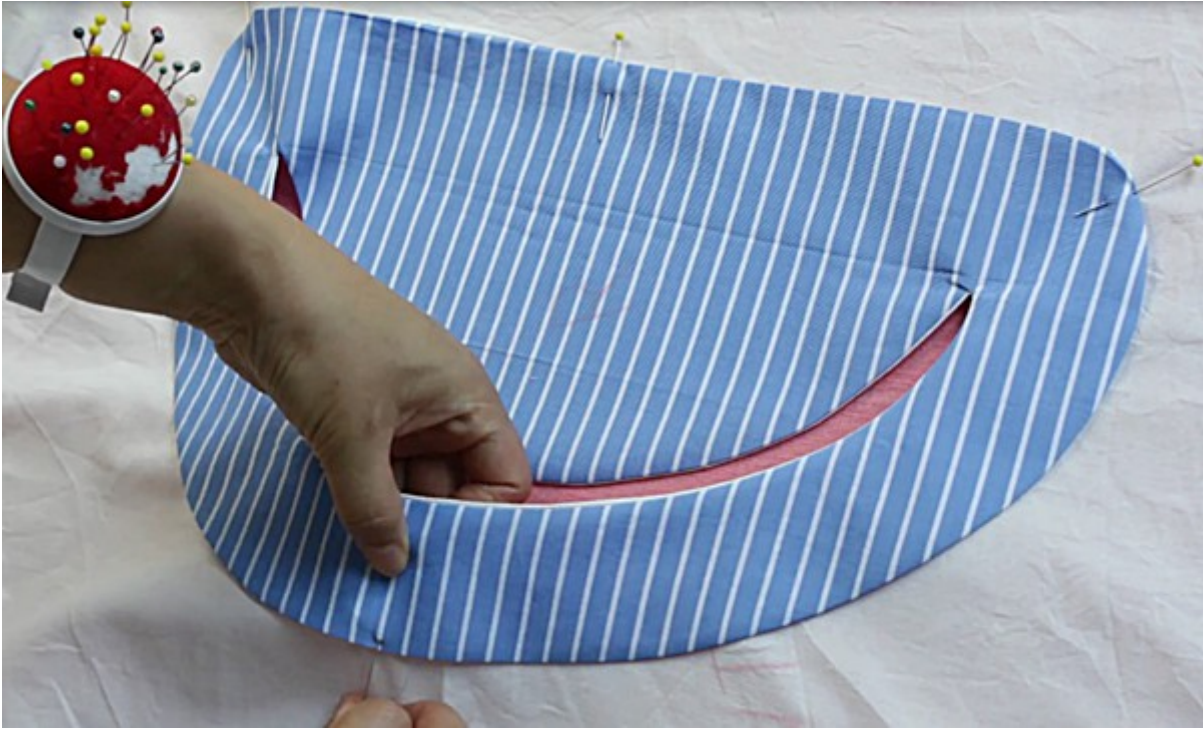
- Clip and notch the seam allowance along the curves.



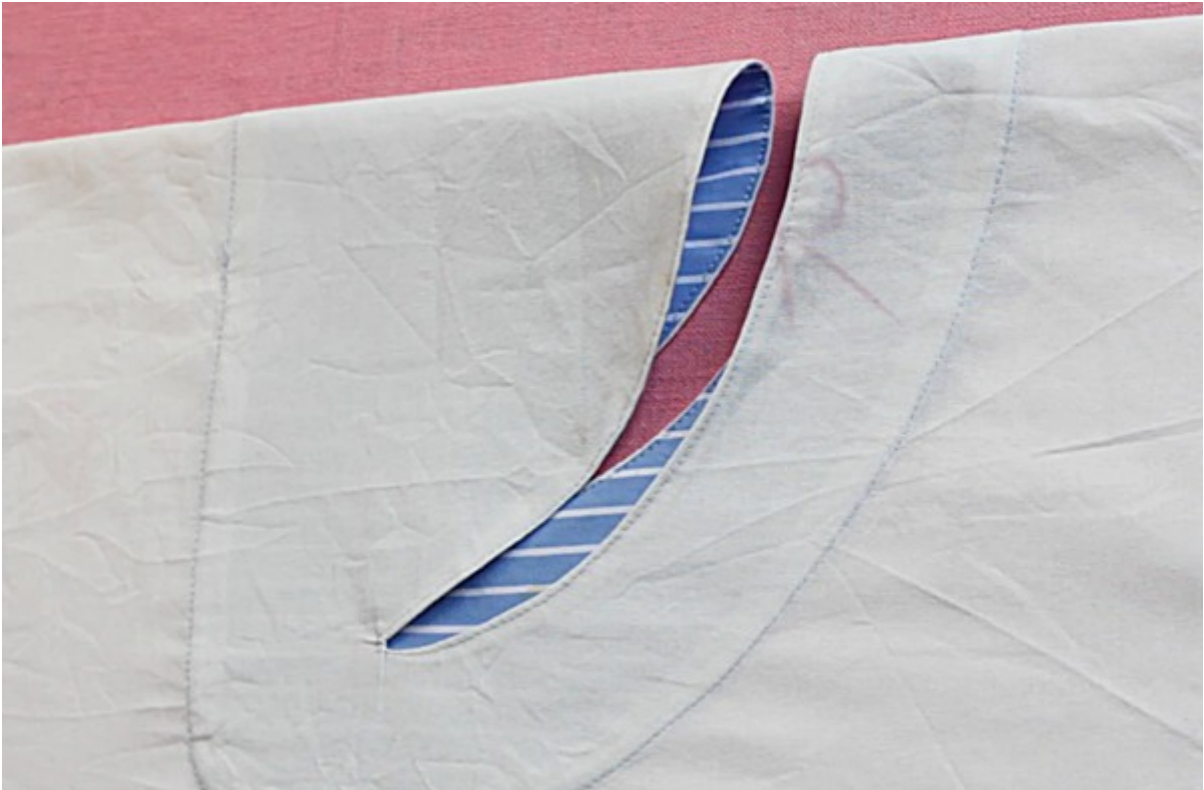
.....



- Turn the neck facing to the inside and press carefully into shape.



- Optionally, topstitch close to the edge of the neckline to further secure the seam.
- Stitch the neck facing in place along its prepared outer edge.



Step3: Sideseams

- Place the front and back pieces right sides together.



- Sew the side seams up to the marked point, securing the beginning and end of the seam with backstitching.
- Press the seam allowances open.



- Fold the seam allowances to the inside and topstitch close to the folded edges to secure them in place.





Step4: Hem work

- Fold the hem allowance to the inside.
- Fold the seam allowances to the inside as well.
- Press everything carefully in place. Pressing beforehand makes the topstitching easier and results in a cleaner finish.



- Topstitch close to the folded edge to secure the hem and seam allowances.



Step5: Sewing collar

- Fuse the interfacing to the wrong side of the collar pieces.
- Place the collar pieces right sides together and sew along the outer edge, leaving a turning opening of approximately 5–6 cm (2–2½") unstitched.



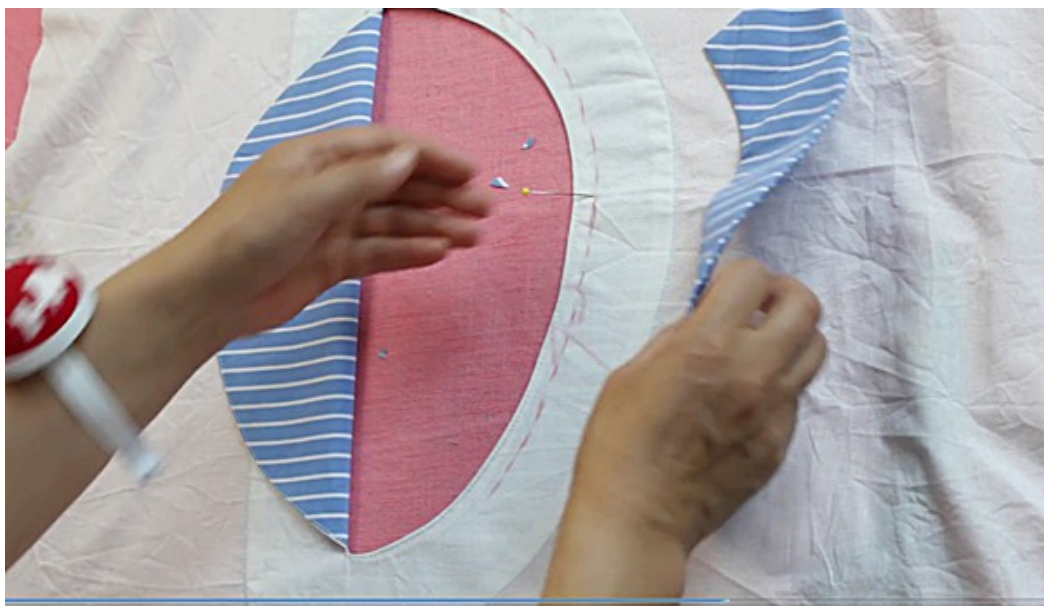
- Trim the seam allowances and clip and notch the curves.



- Turn the collar right side out and carefully shape and press it.
- Pin the turning opening closed and sew it shut by hand using an invisible stitch.



- Position the collar 1 cm (3/8") away from the neckline opening and stitch it in place.



.....



.....



.....



Step6: Sewing front dart

During fitting, determine the ideal position for a dart and secure it with a seam approximately 5–6 cm (2–2½") long.



Important to know!

Fabric preparation:

- Pre-washing the fabric to prevent later shrinkage
- For fabrics that cannot be pre-washed, use steam ironing to pre-shrink them
- Press the fabric before cutting to remove any creases or wrinkles
- Extra fabric may be required for matching plaids, stripes, or one-way design fabrics (directional prints). This also applies to fabrics with a nap, such as velvet
- Additional fabric is needed if you deviate from the cutting layout, for example, when cutting on the cross - grain

Pattern preparation:

- Save the digital patterns to your computer

- To open the files, you will need the free Adobe Acrobat Reader
- Print the pattern at 100% scale (actual size) without any scaling or fit to page settings.
- Pattern print is available in DinA4, DinA0, and US Letter formats
- Print the first page first to check the 10cm x 10cm test square and measure it to ensure the scale is correct

Symbols:

- Solid line : seamallowances
- Dashed line(- - - - -): seam line, and pleats, tucks and hemline
- HM – Center back
- VM – Center front
- Arrow(→): Grainline
- Triangle mark: Zipper placement (end or start of zipper)
- Dot mark: Button position
- Scissor: Cutting line for facing pieces, lining pieces, or patchwork
- Letters: matching points