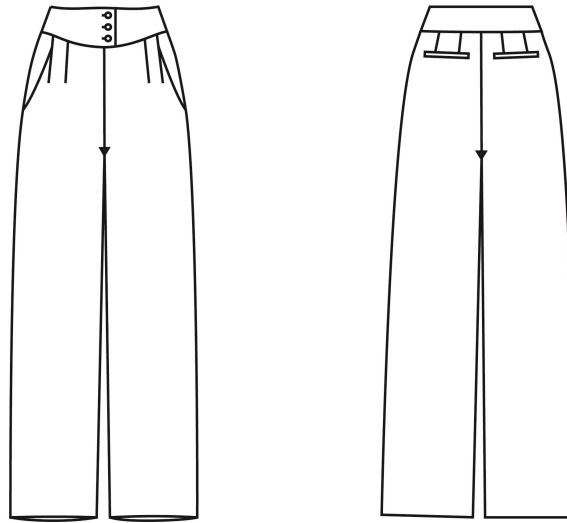


## *Sewing instruction Pant „DAVE“*



### *Women-Sizechart*

Sizes Bodyheight			Bust circumference		Waist circumference		Hip circumference	
Normal sizes	Long sizes	Short sizes	cm	inch	cm	inch	cm	inch
162- 171cm	over 172cm	under 161cm						
Size.34	Size.68	Size.17	82cm	32 ½	66cm	26	89cm	35
Size.36	Size.72	Size.18	85cm	33 ½	69cm	27 ¼	93cm	36 ½
Size.38	Size.76	Size.19	88cm	34 ¾	72cm	28 ½	97cm	38
Size.40	Size.80	Size.20	92cm	36 ¼	76cm	30	101cm	39 ¾
Size.42	Size.84	Size.21	96cm	37 ¾	80cm	31 ½	105cm	41 ¼
Size. 44	Size.88	Size.22	100cm	39 ½	84cm	33	109cm	43
Size.46	Size.92	Size.23	106cm	41 ¾	90cm	35 ½	114cm	44 ¾
Size.48	Size.96	Size.24	112cm	44	96cm	37 ¾	119cm	46 ¾

*The Bustcircumference determines the size for coats, jackets, shirts, dresses, blouses, tops, vests...!*

***The Hipcircumference determines the size for pants and skirts !***

## Pattern pieces

### *From pant fabric*

---

- Front pant – 2x
  - Back pant – 2x
  - Front waistband – 2x + 2x mirrored
  - Back waistband – 2x
  - Pocket – 2x
  - Pocketbag for front pocket – 2x
  - Back pocket welt – 2x
  - Zipper facing – 1x (12cm x 20cm incl. seamallowance)
- 

### *From contrast fabric*

---

- Pocket bag for back pocket – 2x

Width: 17cm incl. seamallowance

Length: 31cm incl. seamallowance

## Material requirements

Material	Shortsizes	Normalsizes	Longsizes
Outer fabric	2,1m	2,2m	2,3m
Interfacing : 0,4m			
Bias binding for finishing seam allowances: 5m (optional, in case you do not have a serger)			
Zipper: 1x 20cm long			
Button -3pieces			

### **Fabric Recommendation:**

Woven fabrics without stretch that have a soft, fluid drape, can be easily pleated/draped, and have a bit of weight to them. Good options are:

- **Tencel**  
Similar in softness to viscose, but often considered more premium and more stable in shape. Has a beautiful heavy drape.
- **Crepe**

Especially nice for soft pleats and movement in the fabric. Available in viscose, polyester, or blended qualities.

- **Modal**  
Very soft and smooth with a fluid character, while remaining comfortable to wear.
- **Linen-Viscose Mix**  
A good option if you want a more natural look: relaxed drape, but less stiff than pure linen.
- **Wool Crepe**  
A more premium and elegant option with beautiful deep pleats and slightly more structure.
- **Cotton** fabrics that hold shape slightly better and create a soft sculptural silhouette rather than a completely fluid drape.

---

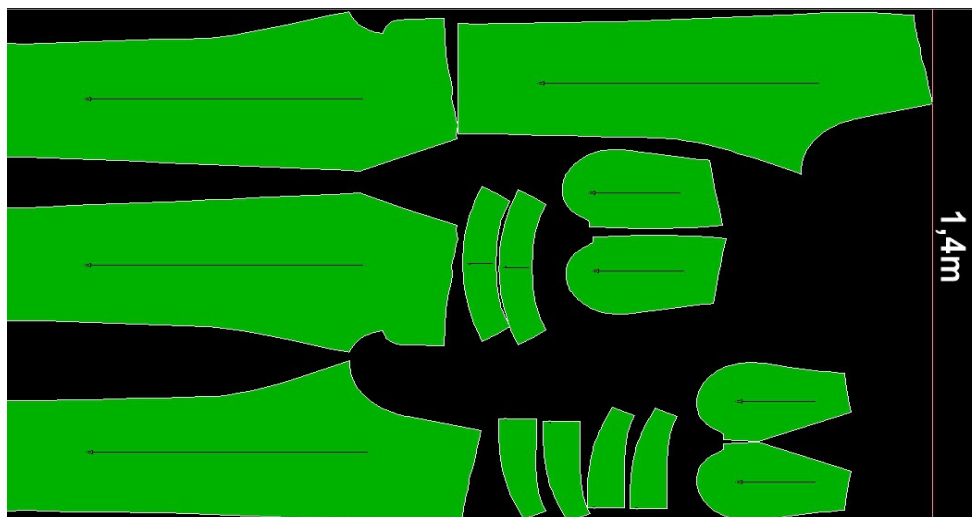
**Original Fabric: lightweight wool**

## Layplan

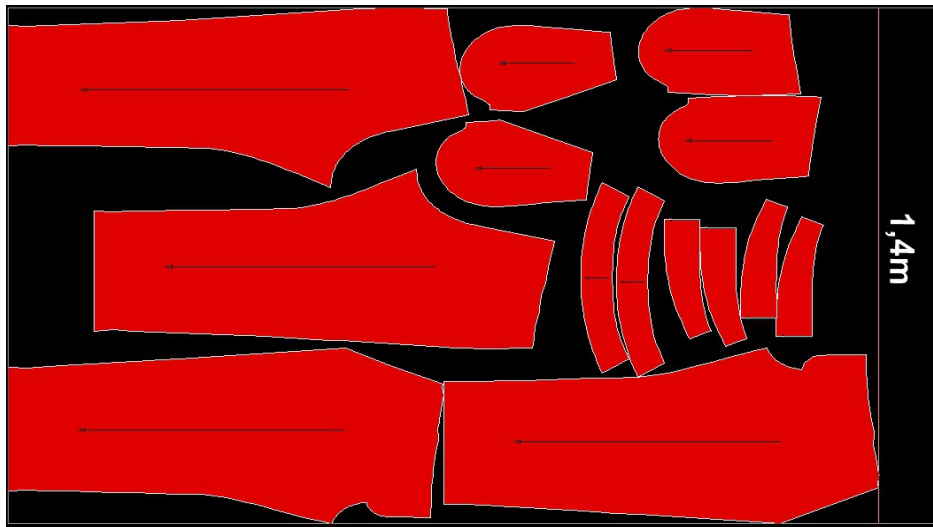
### The pattern pieces include:

- 1.5 cm seam allowance on the side seams, inseams, and pockets, also suitable for French seam finishing
- 1 cm seam allowance for all other seams
- Minimum fabric width: 1.4 m

for small sizes: Shortsized 17-20, normalsized 34-40, longsize 68-80



for big sizes: Shortsizes 21-24, normalsizes 42-48, longsizes 84-96



## *Sewing steps*

### *Preparation*

- Apply interfacing to the fabric pieces; press interfacing onto pocket openings, neck pieces and, if needed, sleeve hem pieces.
- Transfer all markings onto the fabric.
- Check my helpful Youtube-Tutorials : <https://www.youtube.com/@Okistyle-sewing>
- There is also a 2 part video-Tutorial for this pant

**Part1 : Sewing standard pant:** <https://youtu.be/qCy7QV29Mqo>

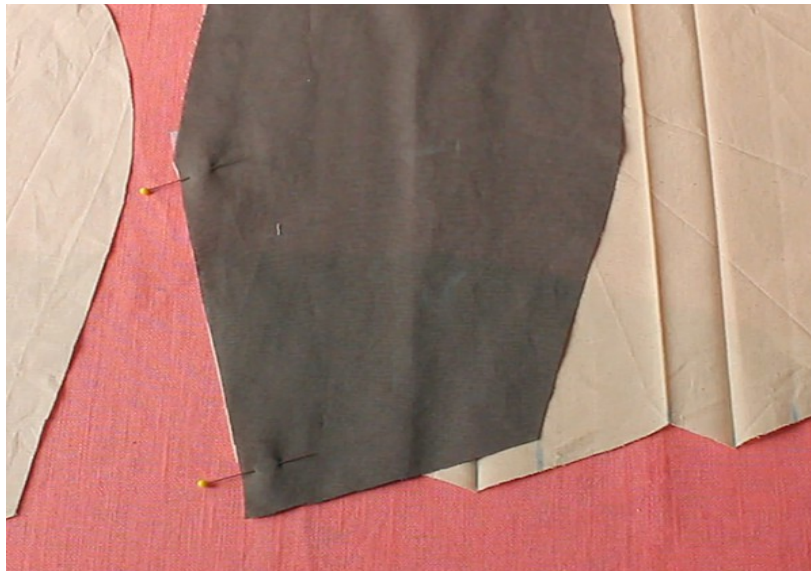
**Part2: Sewing standard pant:** <https://youtu.be/u8xVx59UTPw>

### *Step1: Finish the front pants*

#### **Front Side Pocket (French Seam)**

##### **1. Attach pocket lining**

- Place the pocket lining right sides together onto the slanted pocket opening of the front piece
- Stitch along the pocket opening



- Trim the seam allowance slightly (this helps create a neat edge later)
- Turn the pocket lining to the outside
- Press the edge carefully



- Stitch the pocket lining close to the edge onto the seam allowance (understitch)

? This prevents the lining pocket from rolling outward.



---

## 2. Prepare pocket bag

- Place the pocket bag wrong sides together onto the pocket lining
  - Make sure all edges align exactly
- 

## 3. First seam (French seam)

- Stitch around the pocket bag with a narrow seam allowance (approx. 5–6 mm)
- Important: Leave the pocket opening unstitched



---

## 4. Trim seam allowances

- Trim seam allowances to approx. 2–3 mm
- Clip carefully into curves (do not cut into the seam!)

? This allows the seam to lie smoothly after turning.



---

## 5. Turn and press

- Turn the pocket bag so it is now right sides together



- Shape the edges neatly , Press thoroughly



---

## 6. Second seam

- Stitch around the pocket bag again with approx. 1 cm seam allowance
- The raw edges are now fully enclosed



---

## 7. Secure pocket

- Lay the finished pocket flat towards the front
- Secure it:
  - at the top edge (towards yoke)
  - at the side seam



---

## Front Pleat

- Press the front pleats into shape
- Topstitch along the pleat fold, 4–10 mm (1/8"–3/8") from the edge, to add structure and definition to the deep pleat
- Secure the pleats at the waistline

---

## ***Step2: Back pants- simple welt pocket***

*(Welt formed from pocket bag, with French seam finish)*

---

## ? Preparation (Pant)

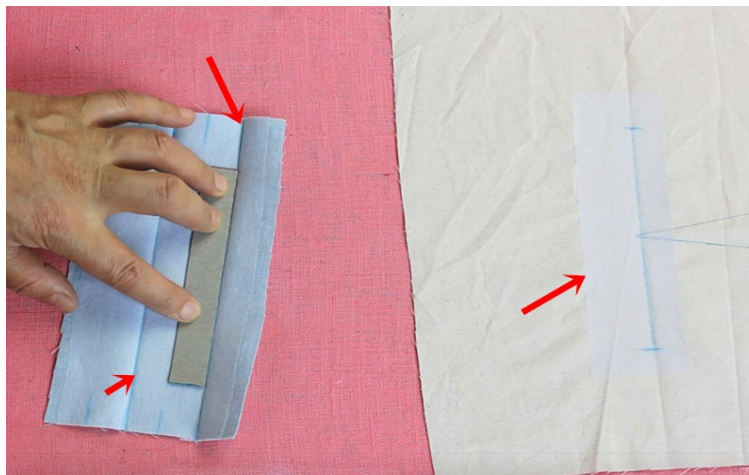
- Apply interfacing to the wrong side of the fabric in the pocket opening area
- Accurately mark the pocket position and opening lines on the right side of the fabric
- Sew the waist dart above the pocket
- Press the dart toward the side seam



---

### ? Preparation (Pocket Bag)

- Cut pocket pieces:
  - Upper pocket bag in self fabric (to form the welts)
  - Lower pocket bag in lining fabric
- Apply interfacing to the upper pocket bag
- Sew upper and lower pocket pieces right sides together
- Finish seam allowances and press
- Pre-press the following lines:
  - Pocket opening lines
  - Welt fold line
    - ? This makes the lines visible on the right side and helps with accuracy
- Also mark the pocket opening lines on the wrong side

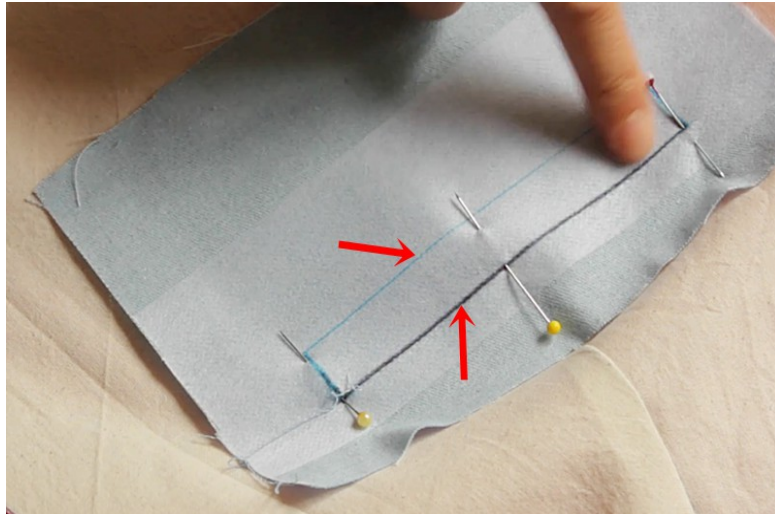


---

## Sew the Pocket

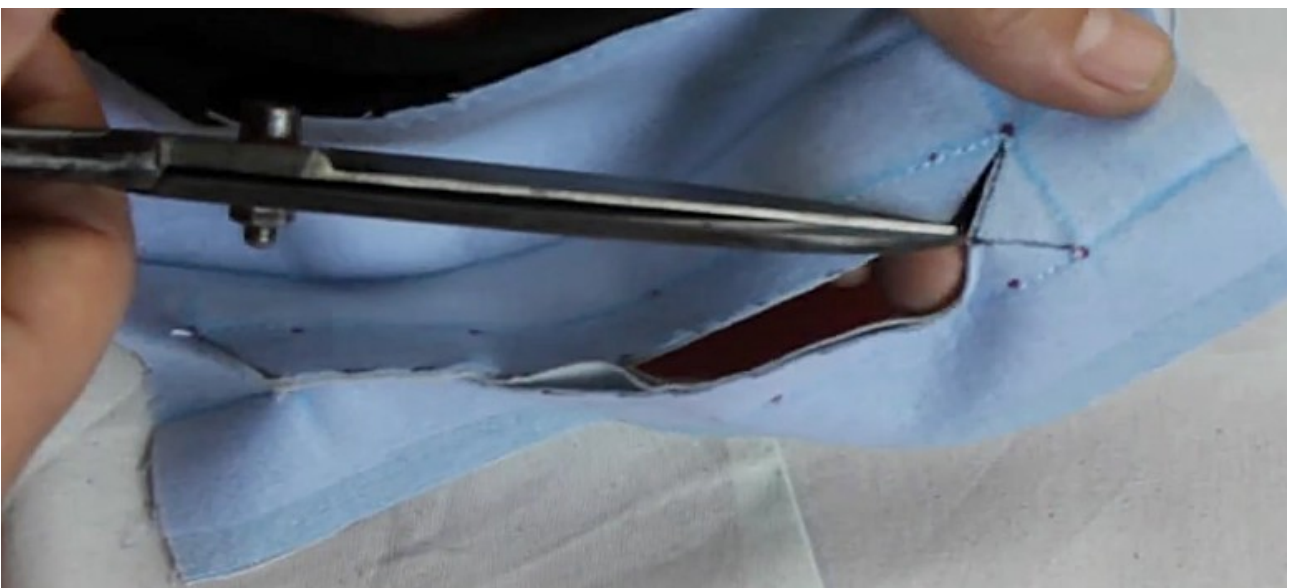
### 1. Attach Pocket

- Place the pocket bag right sides together onto the garment
- Stitch along the marked pocket opening lines- 2 parallel lines
- Secure the stitch ends



### 2. Cut Opening

- Cut between the stitching lines
- At each end, cut diagonally up to (but not into) the stitching (Y-cut)  
? Do not cut into the seams



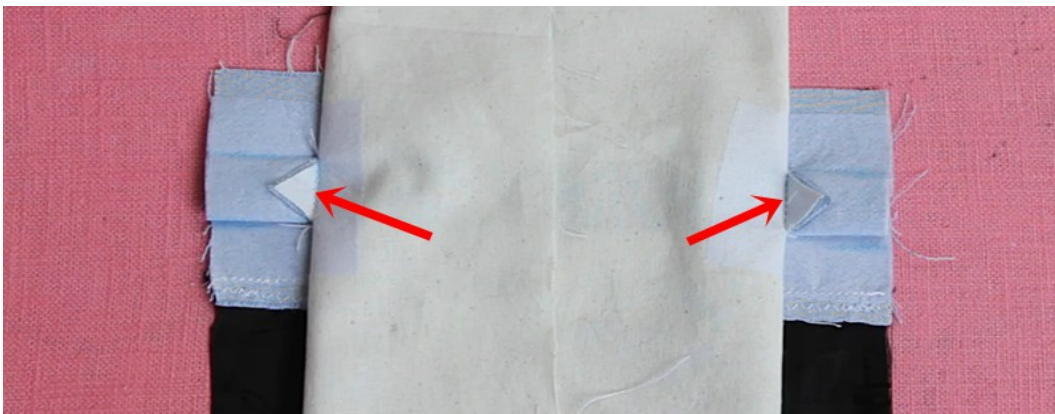
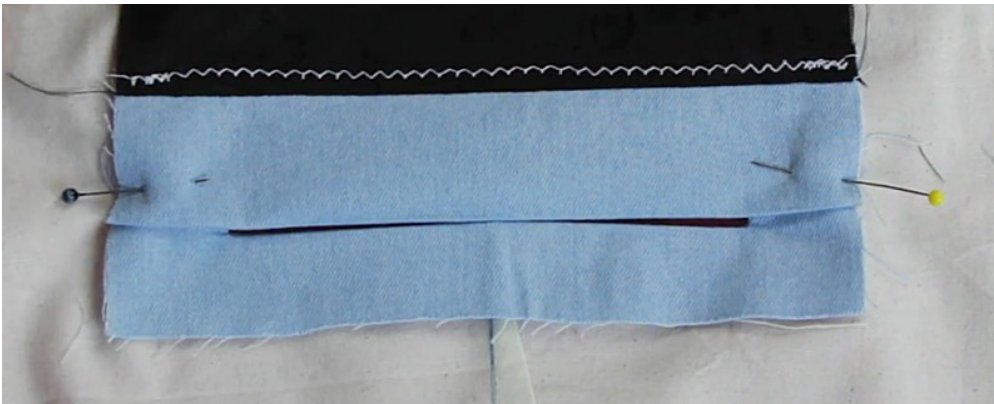
---

### 3. Turn & Form Welts

- Turn the pocket bag to the inside
- Use the pressed fold lines to shape the welts neatly
- Press carefully



- On the wrong side, stitch the small triangular seam allowances at both ends ? This secures the welt



#### 4. Close Pocket Bag (French Seam)

- Fold the lower pocket bag upward



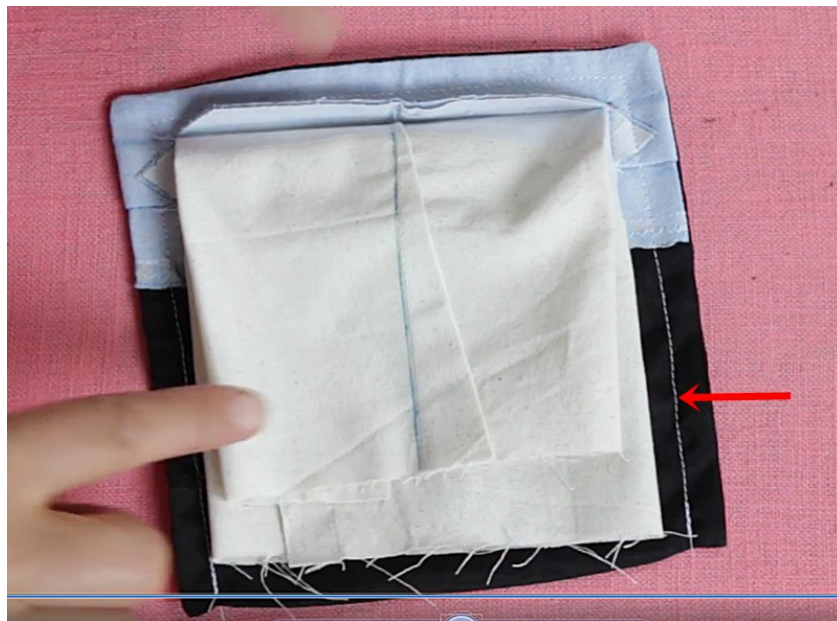
- Place the pocket bag wrong sides together and align
- ? The garment is folded neatly inside the pocket bag
- Stitch the first seam with approx. 1 cm (3/8") seam allowance



- Trim seam allowances and clip corners
- Turn the garment through the pocket opening



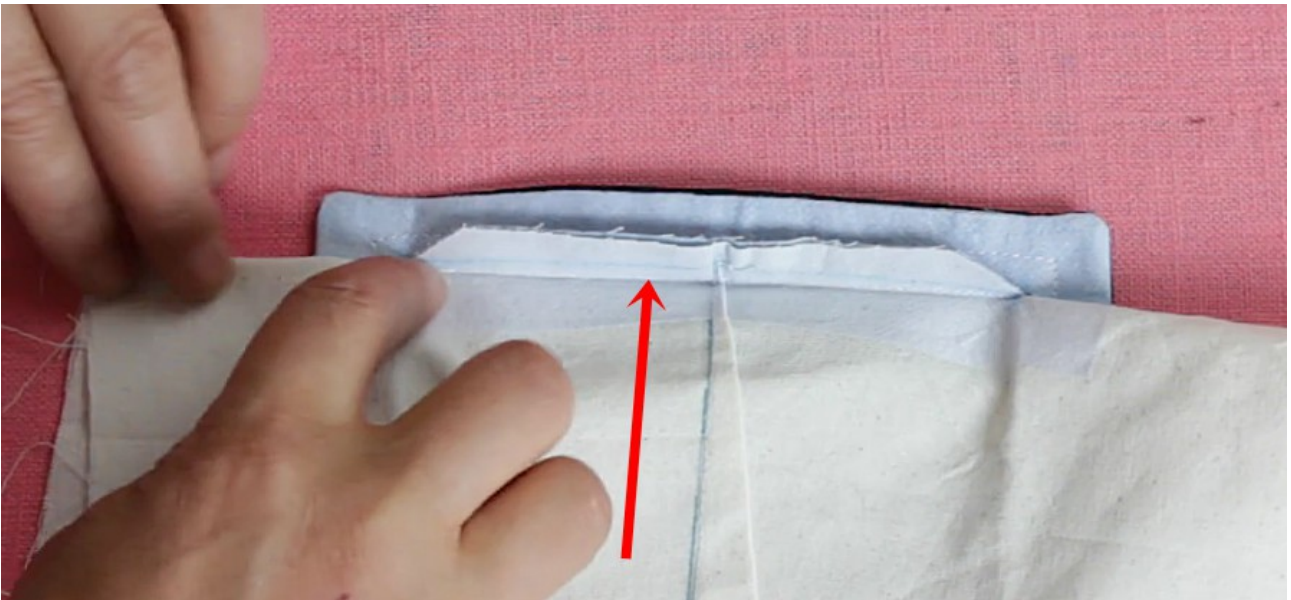
- Shape carefully and press
- Stitch the second seam with approx. 1 cm (3/8") seam allowance  
? All raw edges are now fully enclosed



---

## 5. Finishing

- Press the pocket bag downward
- From the wrong side, stitch along the upper edge of the pocket opening



- From the right side, topstitch along both sides and above the pocket opening to secure



---

### ? Tips

- Precision is essential when sewing welt pockets
  - Press carefully after each step for clean results
  - Baste first if needed for better control
-

### **Step3: Finish the pant legs**

#### **Side Seam**

- Place the front and back pant pieces right sides together
  - Stitch the side seam closed
  - Finish the seam allowances with bias binding
- 

#### **Inseam**

- Place the front and back pant pieces right sides together
  - Stitch the inseam closed
  - Finish the seam allowances with bias binding
- 

### **Step4: Crotchseam and zipper**

#### **Crotch Seam (Joining Both Pant Legs)**

- Turn one pant leg right side out
- Insert it into the other pant leg so that the pieces are right sides together

? The crotch seams should now align exactly

- Stitch the crotch seam in one continuous seam, starting at the center back and ending at the bottom of the zipper opening

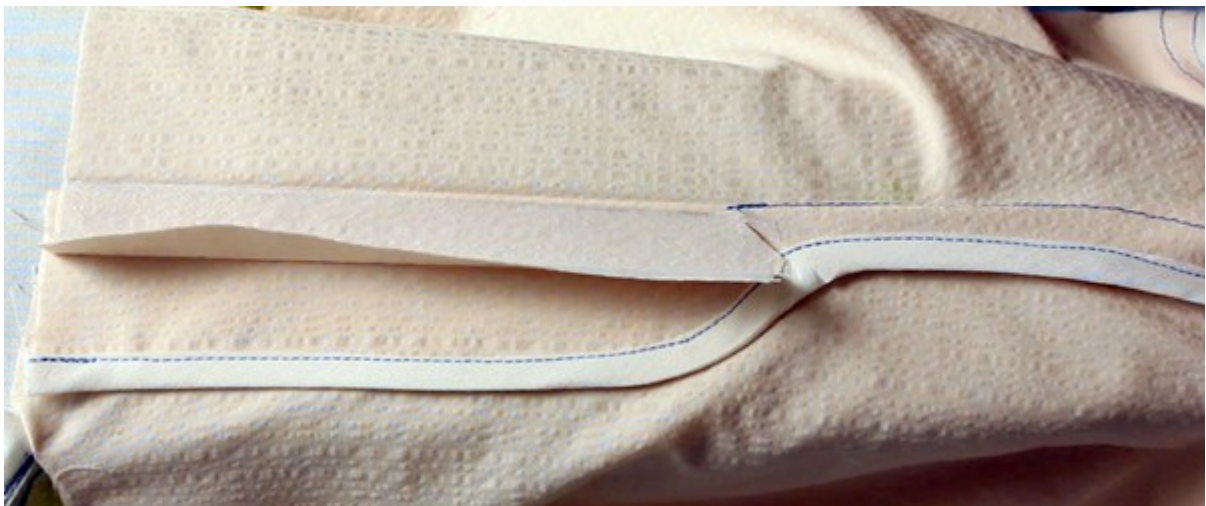


- Clip the seam allowance at the corner of the shorter zipper facing



? This makes it easier to finish the seam allowance with bias binding later

- Finish the entire seam allowance with bias binding — from the center back to the front waist edge, including the curved facing . Baste would help here!



---

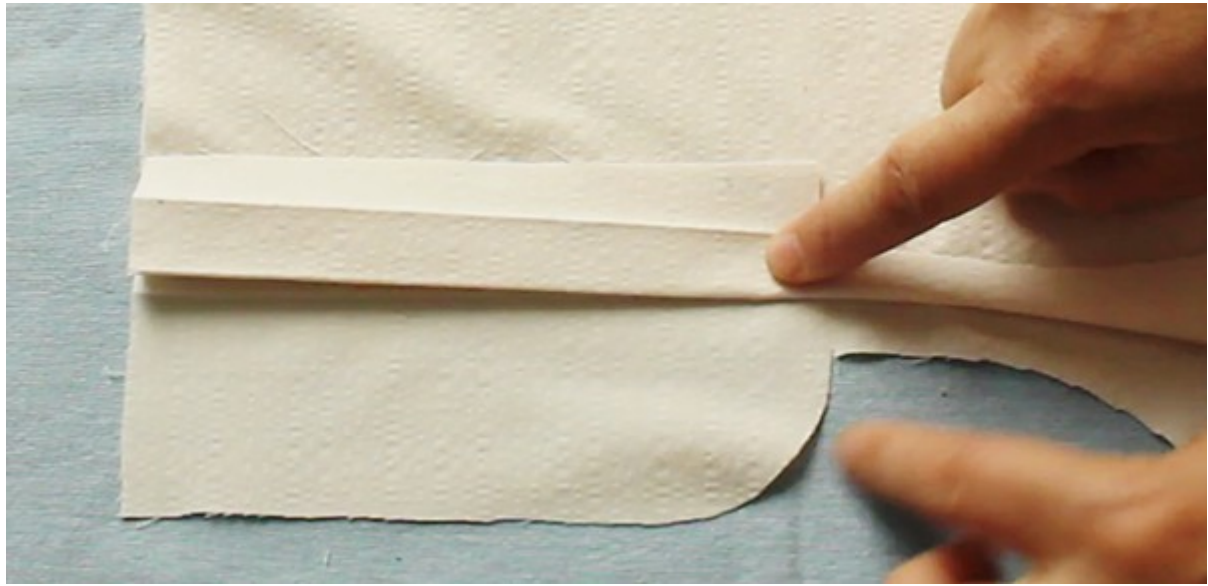
## **Zipper sewing**

(Please take a look at my zipper video tutorial! It's much easier to show the process than to explain it in words. )

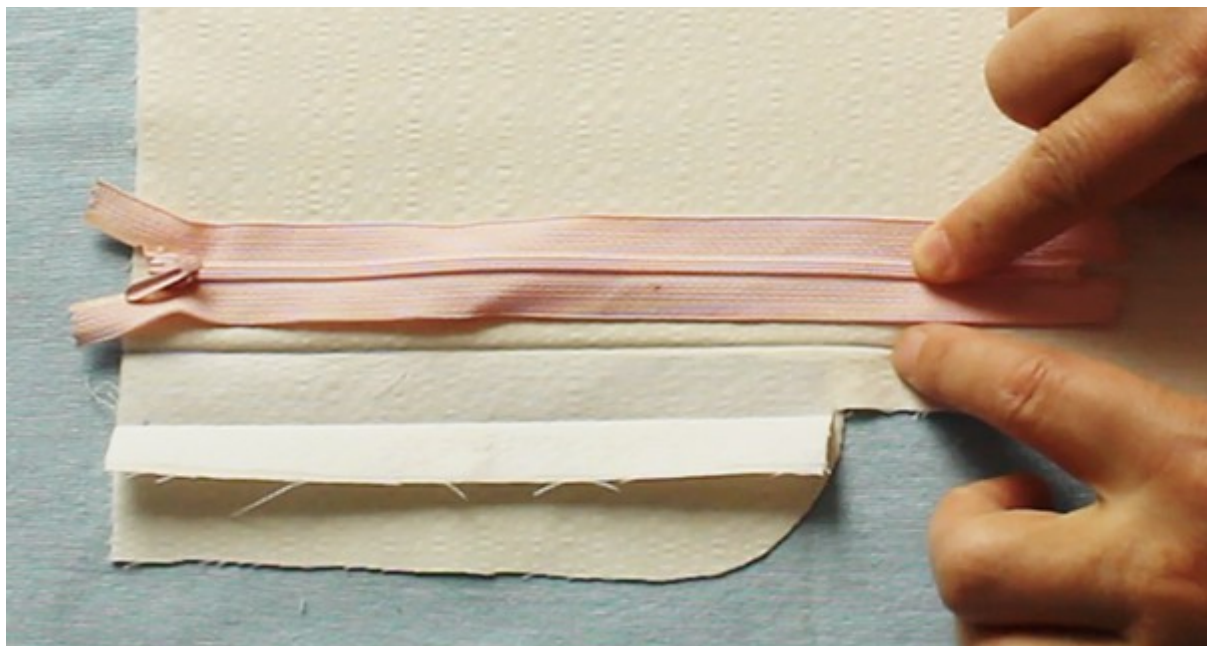
**Tutorial S29:** <https://youtu.be/0dtdr75FT2E>

### **Preparation**

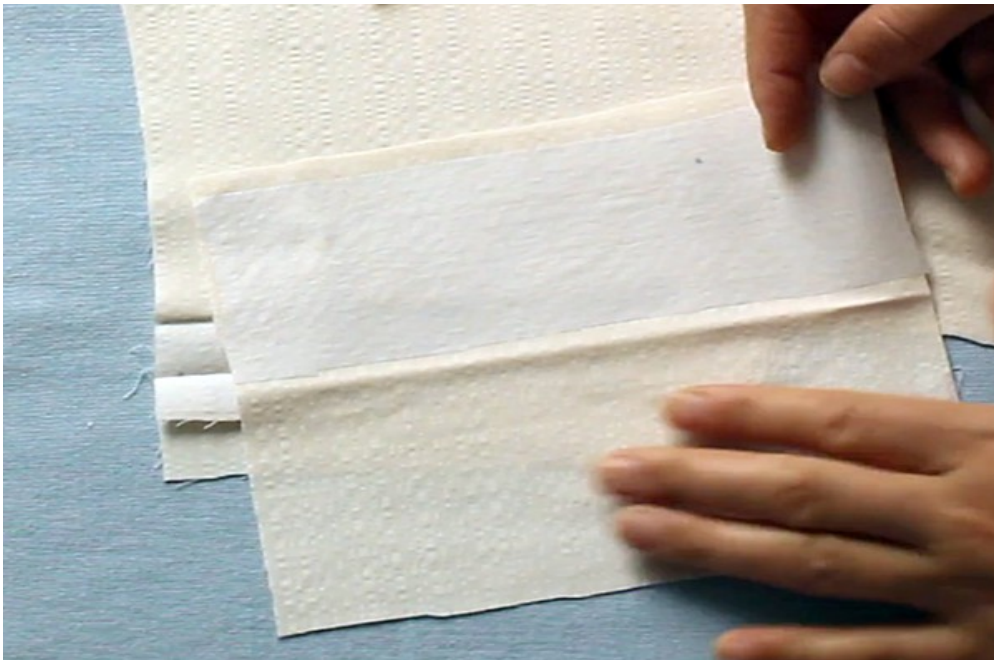
- Mark all important lines, such as the center front, by pressing.



- The zipper should be slightly longer than the marked zipper opening.



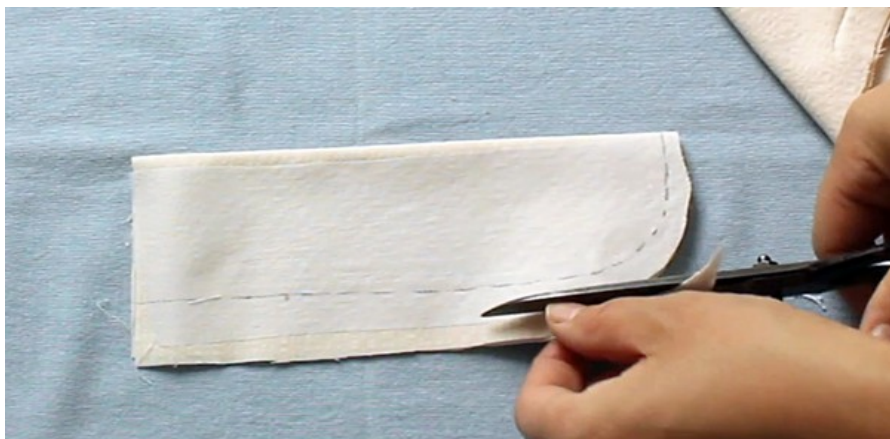
- Reinforce the facing with interfacing.



- Prepare and shape the zipper facing.



.....



- Sew the facing and clip the seam allowances along the curves.

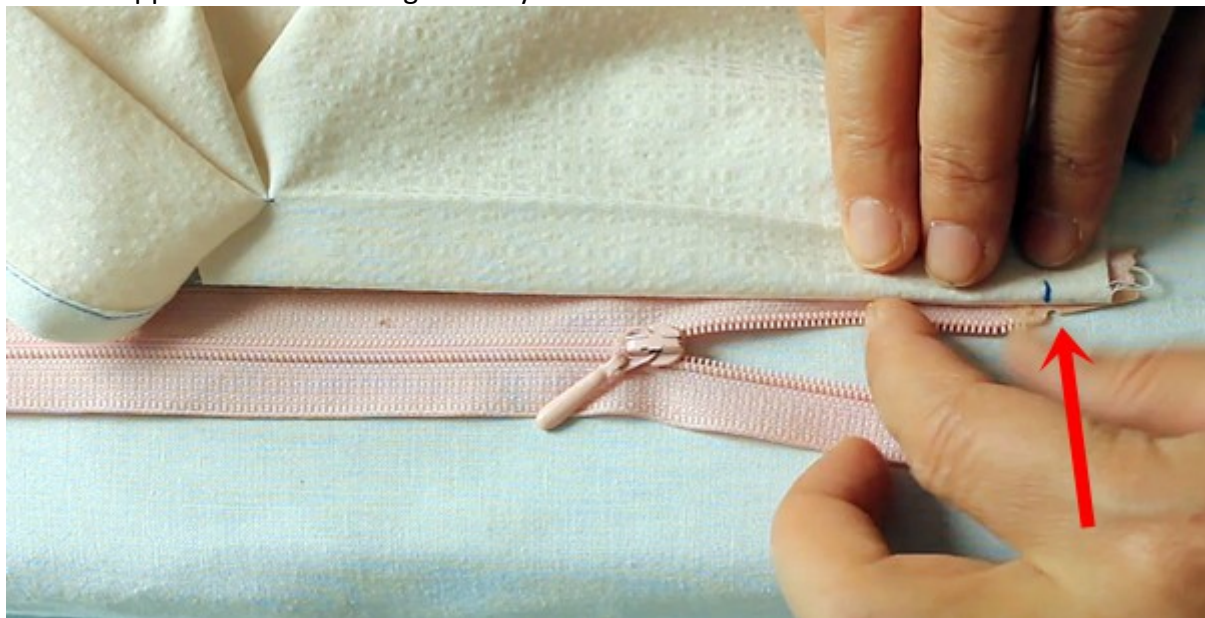


- Turn the facing right side out and press carefully into shape.

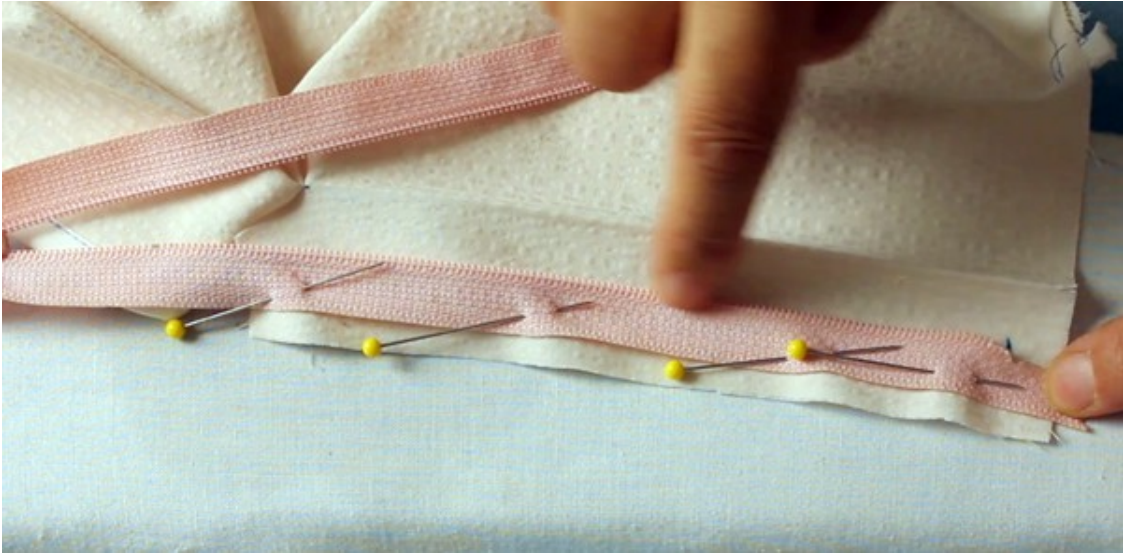
## Attach the zipper

### 1. Attach the right side

- Place the zipper right sides together underneath the right front pant piece.
- The zipper teeth should align exactly with the fold line of the center front.



- Pin in place and stitch close to the left zipper tape using a zipper foot.



- Fold inward and press.



## 2. Place the left side

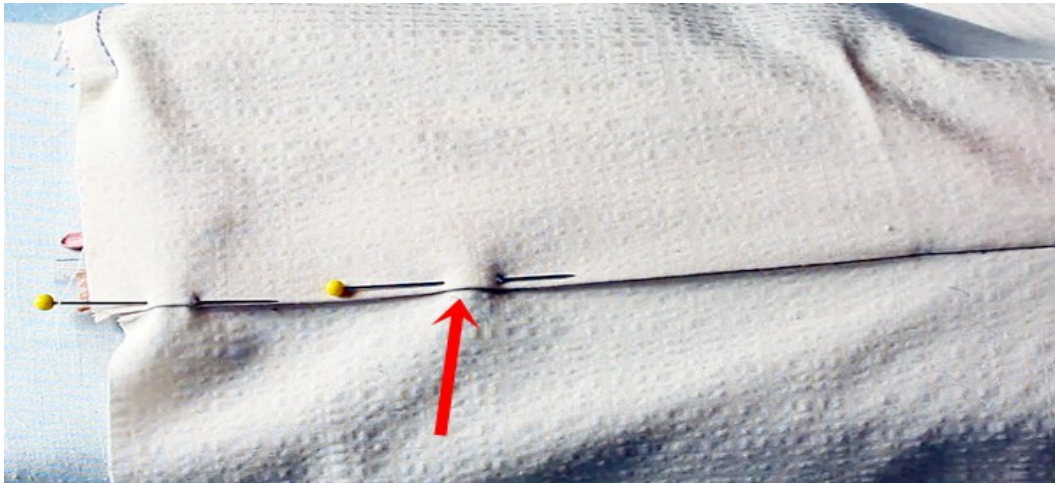
- Lay the other front pant piece over the zipper.
- The pressed fold lines of the center front should match exactly.



- Make sure the zipper is neatly concealed.



- Shape carefully and pin close to the edge.



### 3. Attach the facing

- From the inside, pin the facing together with the zipper.

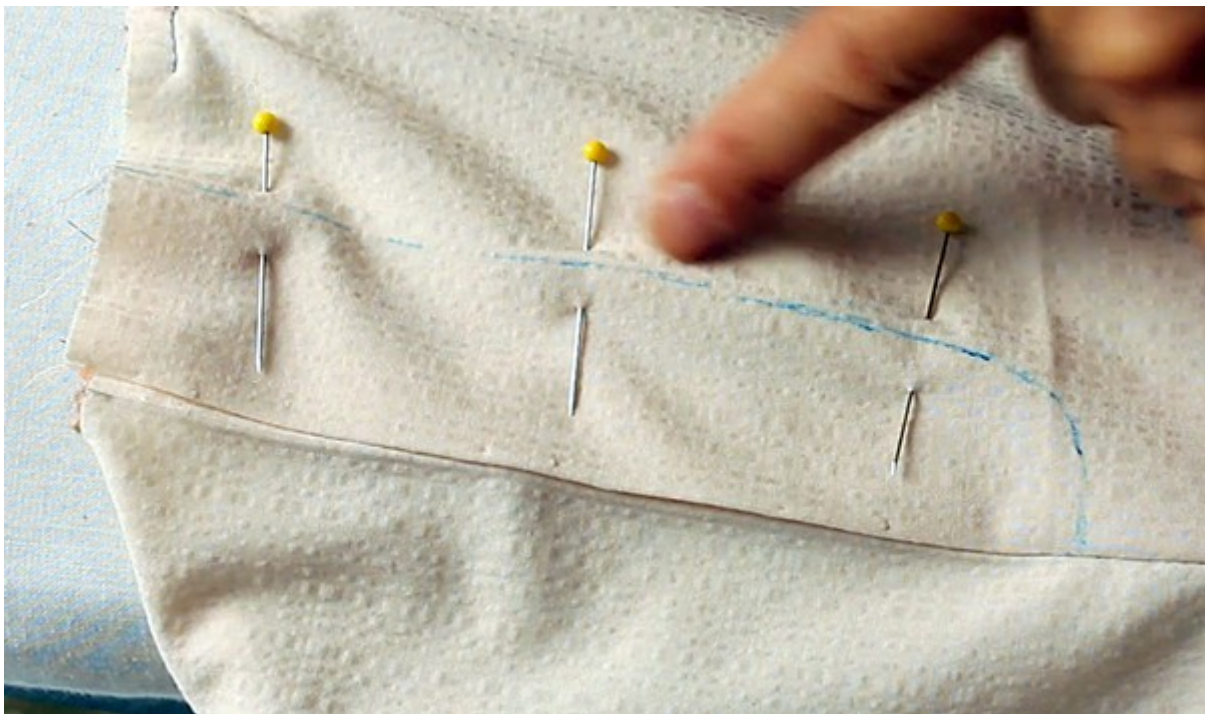


- Stitch only the facing to the zipper tape.



#### 4. Topstitch

- From the right side, sew the typical curved or straight topstitching line.



- This secures both the zipper and the facing.



- Position the separate facing neatly.



- Then topstitch along the zipper from the right side.



## 5. Bar tack

- Sew a horizontal bar tack at the lower end of the zipper.



?This reinforces the zipper opening and prevents tearing.



- Finally, even out the top waist edge.



## Step5: Sewing waistband

Youtube-Tutorial: <https://youtu.be/5041BTw52cQ>

### Prepare the Belt Loops

- Check the waistband edge of the trousers and ensure everything lies evenly



- Make and press the belt loops



- Check and adjust the lengths if necessary



- Pin the belt loops to the upper waist edge according to the markings



---

### Sew the Waistband Pieces Together

- Join the waistband pieces at the side seams or center back seam
- Press seam allowances open
- Place the inner and outer waistband right sides together



- Stitch along the upper waistband edge
- ? Leave the lower joining edge open
- Trim the seam allowances and clip evenly along the curves



- Press seam allowances toward the inner waistband
- Understitch the inner waistband close to the seam allowance



? This allows the outer waistband to roll slightly inward later, keeping the seam invisible from the outside

---

### **Turn the Waistband**

- Turn the waistband right side out
- Carefully shape the corners and edges
- Press thoroughly

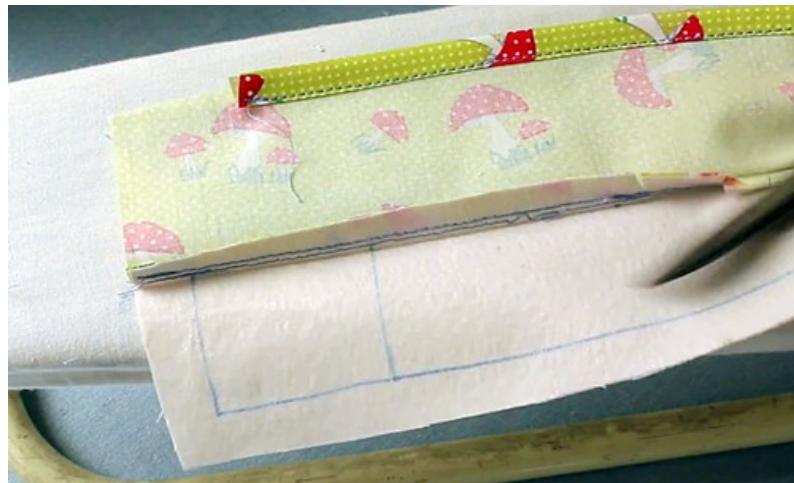
? Due to understitching, the outer waistband rolls slightly inward



- Align the lower edges evenly



- Finish the lower edge of the inner waistband with bias binding



---

### **Attach the Outer Waistband**

- Pin the outer waistband right sides together to the upper waist edge of the trousers
- Match all markings, side seams, and center front precisely
- Stitch the waistband in place



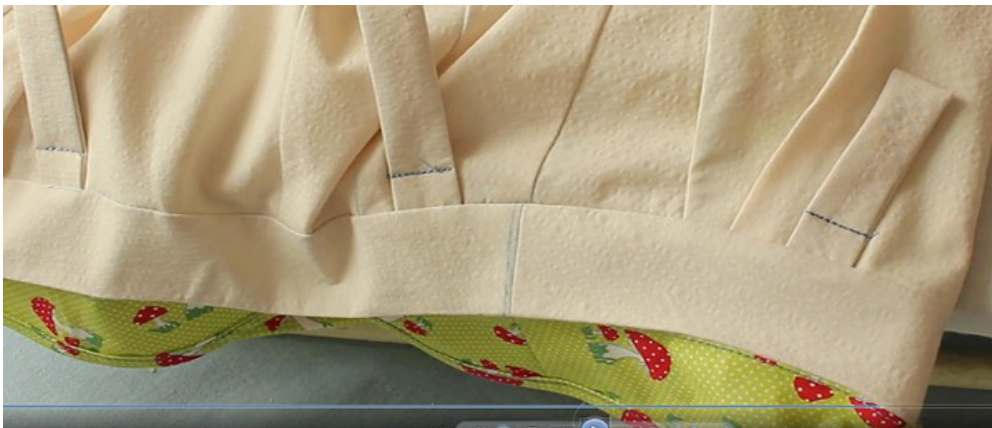
- Trim seam allowances evenly



- Press seam allowances into the waistband



- Stitch the lower ends of the belt loops into the waistband seam



### **Close the Waistband Ends**

- Close both waistband ends

? Make sure the outer waistband rolls slightly inward





- Trim seam allowances at the corners
- Turn the corners and press carefully into shape



.....



### **Secure the Inner Waistband Edge**

- Place the finished inner waistband edge over the joining seam
- Pin or baste carefully
- From the right side, topstitch close to the edge or stitch in the ditch

? The inner waistband edge will be caught and secured at the same time



---

### **Finishing**

- Press the waistband carefully into shape
- Stitch the upper ends of the belt loops in place



- Sew the buttonhole and attach the button



.....



### ***Step 6: Sew the pant hem***

- Check the hem width and adjust if necessary.
- Press the hem allowance to the inside so the hem sits smoothly in shape.
- Fold the seam allowance evenly to the inside.



- Turn the hem to the inside and press carefully.
- Secure with pins or, preferably, baste in place.



- Sew invisibly by hand using a blind stitch, or  
(Video Tutorial S30) <https://youtu.be/aSTUf8w3ZE>
- Topstitch close to the edge using the sewing machine.

### **Important to know!**

#### **Fabric preparation:**

---

- Pre-washing the fabric to prevent later shrinkage
- For fabrics that cannot be pre-washed, use steam ironing to pre-shrink them
- Press the fabric before cutting to remove any creases or wrinkles
- Extra fabric may be required for matching plaids, stripes, or one-way design fabrics (directional prints). This also applies to fabrics with a nap, such as velvet
- Additional fabric is needed if you deviate from the cutting layout, for example, when cutting on the cross - grain

#### **Pattern preparation:**

---

- Save the digital patterns to your computer
- To open the files, you will need the free Adobe Acrobat Reader
- Print the pattern at 100% scale (actual size) without any scaling or fit to page settings.

- Pattern print is available in DinA4, DinA0, and US Letter formats
- Print the first page first to check the 10cm x 10cm test square and measure it to ensure the scale is correct

## **Symbols:**

---

- Solid line : seamallowances
- Dashed line(- - - - -): seam line, and pleats, tucks and hemline
- HM – Center back
- VM – Center front
- Arrow(→): Grainline
- Triangle mark: Zipper placement (end or start of zipper)
- Dot mark: Button position
- Scissor: Cutting line for facing pieces, lining pieces, or patchwork
- Letters: matching points