

## *Sewing instruction Skirt „DENAS“*



### Women-Sizechart

Sizes Bodyheight			Bust circumference		Waist circumference		Hip circumference	
Normal sizes	Long sizes	Short sizes	cm	inch	cm	inch	cm	inch
162- 171cm	over 172cm	under 161cm						
Size.34	Size.68	Size.17	82cm	32 ½	66cm	26	89cm	35
Size.36	Size.72	Size.18	85cm	33 ½	69cm	27½	93cm	36 ½
Size.38	Size.76	Size.19	88cm	34 ¾	72cm	28 ½	97cm	38
Size.40	Size.80	Size.20	92cm	36 ¼	76cm	30	101cm	39 ¾
Size.42	Size.84	Size.21	96cm	37 ¾	80cm	31 ½	105cm	41 ¼
Size. 44	Size.88	Size.22	100cm	39 ½	84cm	33	109cm	43
Size.46	Size.92	Size.23	106cm	41 ¾	90cm	35 ½	114cm	44 ¾
Size.48	Size.96	Size.24	112cm	44	96cm	37 ¾	119cm	46 ¾

*The Bustcircumference determines the size for coats, jackets, shirts, dresses, blouses, tops, vests...!*

***The Hipcircumference determines the size for pants and skirts !***

## Pattern pieces

### *From pant fabric*

- Front right skirt – 1x
- Front left skirt – 1x
- Back skirt – 1x
- Waist flounce – 1x
- Front skirt – 1x
- Back skirt – 1x
- Button closure facing – 2x
- Waistband – 1x

### Material requirements

Material	shortsizes 17-20	shortsizes 21-24	normalsizes 34-40	normalsizes 42-48	longsizes 68-80	longsizes 84-96
Fabric	2,1 m	2,1 m	2,2 m	2,2 m	2,3 m	2,3 m
Interfacing	0,2m					
Buttons	5 pieces					
Bias tape	It is optional: if you have no serger! For the skirt hem – 5m For the connecting seam between skirt and upper part – 1,4m					

Material	shortsizes 17-20	shortsizes 21-24	normalsizes 34-40	normalsizes 42-48	longsizes 68-80	longsizes 84-96
If you cut all pattern pieces from same fabric	2,6 m	2,7 m	2,7 m	2,8 m	2,8 m	2,9 m

**Fabric Recommendation: Woven fabrics without stretch that have a soft, fluid drape**

- **Viscose:**  
Soft and fluid, comfortable for summer

- **Tencel**  
Similar in softness to viscose, but often considered more premium and more stable in shape. Has a beautiful heavy drape.
  - **Crepe**  
Especially nice for soft pleats and movement in the fabric. Available in viscose, polyester, or blended qualities.
  - **Modal**  
Very soft and smooth with a fluid character, while remaining comfortable to wear.
  - **Linen-Viscose Mix**  
A good option if you want a more natural look: relaxed drape, but less stiff than pure linen.
  - **Wool Crepe**  
A more premium and elegant option with beautiful deep pleats and slightly more structure.
  - **Lightweight cotton**  
Light weight sommer cotton
- 

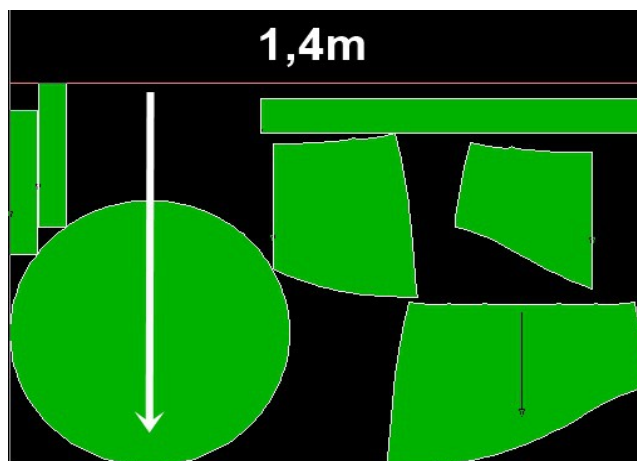
**Original Fabric: Tencel -viscose for the skirt piece and wool crepe for the upper piece**

## Layplan

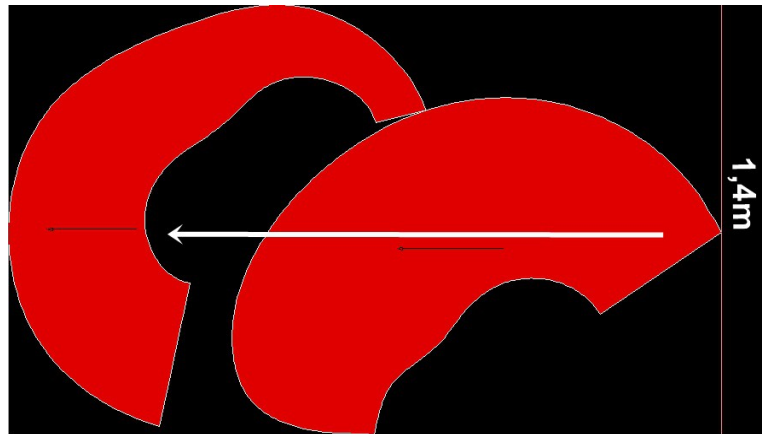
The pattern pieces include:

- **1.5 cm** seam allowances for side seams, and pockets for french seam work
- 1 cm seam allowance for all other seams
- Minimum fabric width: 1.4 m

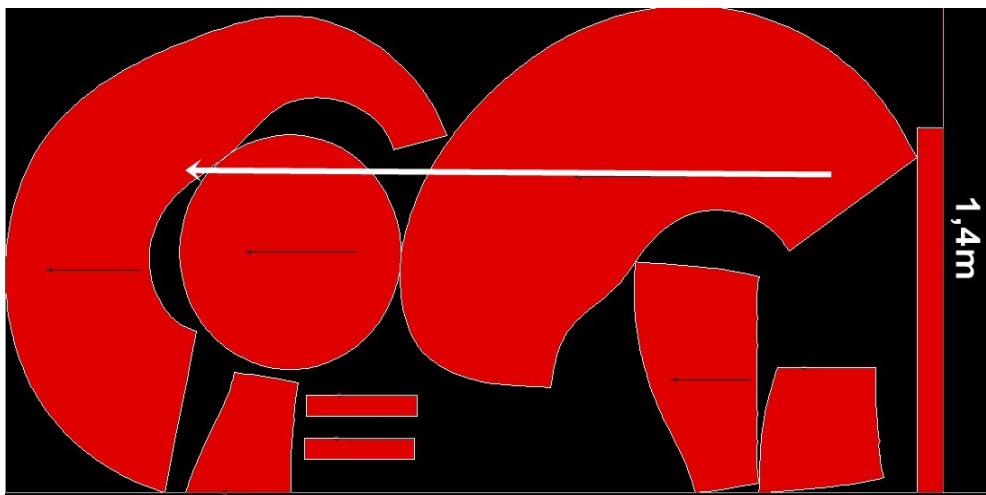
**For the upper part:**



**For the skirt piece:**

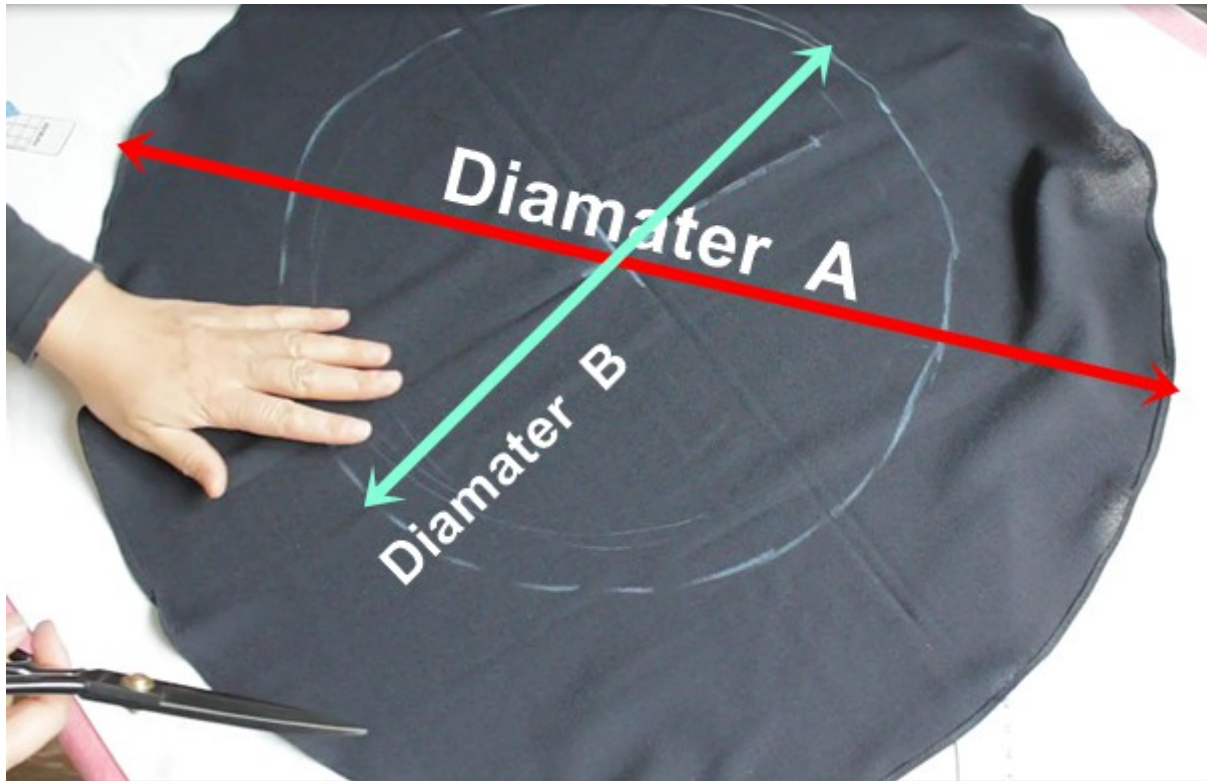


**If you cut the skirt from same fabric:**



**If you print the pattern on A4 or US Letter paper, please draw the circle for the waist flounce directly onto the fabric. The required measurements are listed below.**

- size 34 , size 17, size 68: Diameter A- 60cm, Diameter B(Inside circle)- 26cm
- size 36 , size 18, size 72: Diameter A- 61cm, Diameter B(Inside circle) - 27cm
- size 38 , size 19, size 76: Diameter A-62cm , Diameter B(Innenkreis) - 28cm
- size 40 , size 20, size 80: Diameter A- 63cm, Diameter B(Innenkreis) - 29cm
- size 42 , size 21, size 84: Diameter A-64cm , Diameter B(Innenkreis) - 30cm
- size 44 , size 22, size 88: Diameter A- 65cm, Diameter B(Innenkreis) - 31cm
- size 46 , size 23, size 92: Diameter A-66cm , Diameter B(Innenkreis) - 32cm
- size 48 , size 24, size 96: Diameter A- 67cm, Diameter B(Innenkreis) – 33cm



## *Sewing steps*

### *Preparation*

Before you begin sewing, make sure everything is prepared and ready to use.

- Apply interfacing to the fabric pieces; press interfacing onto facing pieces and waistband
- Make all bias tapes (from left over fabric) for finish the seams and raw edges
- Transfer all markings onto the fabric
- Check my helpful Youtube-Tutorials : <https://www.youtube.com/@Okistyle-sewing>
- There is also a video-Tutorial for this skirt: <https://youtu.be/ZdV4YnuyKZY>

### *Step1: Sewing upper skirt (french seam)*

#### ***Darts***

- Sew the waist darts in the back skirt piece.
- Press the darts toward the side seam.



## Side Seam

- Place all pieces wrong sides together along the side seam.
- Sew the first seam with a seam allowance of approximately 0.5 cm ( $\frac{1}{4}$ " ).
- Trim the seam allowances carefully.



- Turn the pieces so that the right sides are now facing together, ready for the second seam of the French seam finish.
- Carefully shape the edges and press them flat.

- Sew a second seam with a seam allowance of approximately 1 cm ( $\frac{3}{8}$ ").



- Press the seam allowances to back piece

## ***Step2: Sewing waist flounce***

### **Preparing the Flounce and Attaching It to the Waistline**

Since the flounce is cut as a circle, it has a curved hem edge.

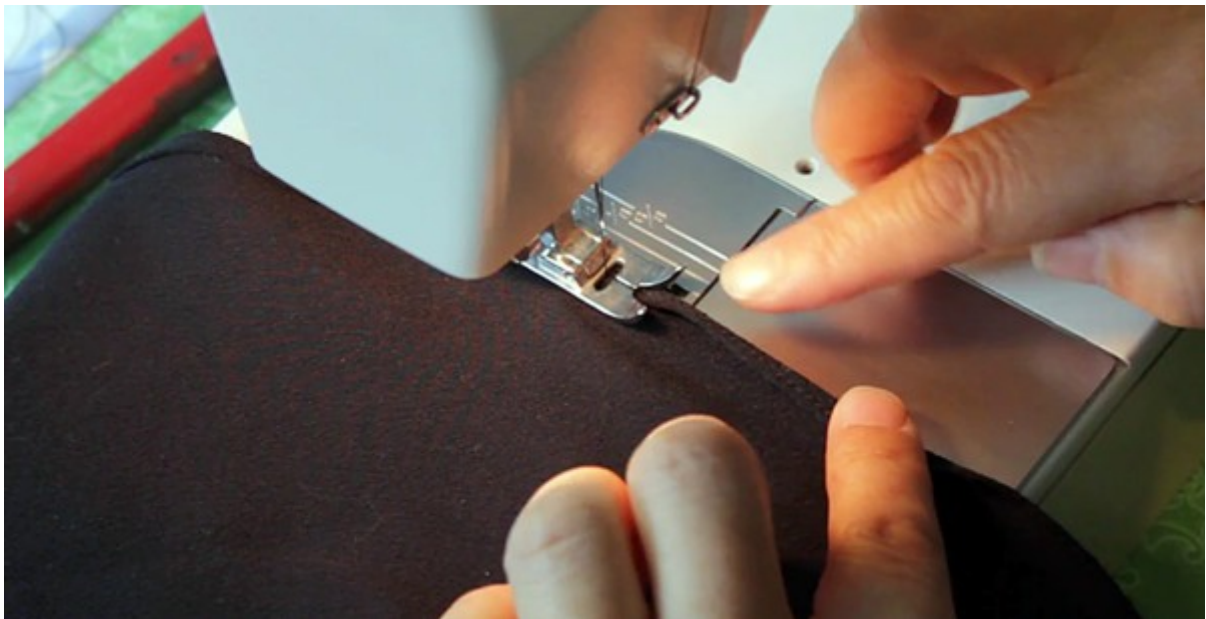
- First, fold the hem edge to the inside by 4–5 mm ( $\frac{1}{8}$ – $\frac{1}{4}$ " ) and topstitch close to the fold.



- Trim the seam allowance carefully.



- Fold the edge inward again by another 4–5 mm and topstitch close to the folded edge.



*Because of the curved shape, the edge may become slightly wavy in some areas. This can be corrected by carefully pressing the hem into shape.*

### **Basting to the waistline**

- Next, mark the inner circle of the flounce.



- Cut out the flounce along this marked inner circle.



- Then cut an opening from the inner circle to the outer edge. It is best to make this cut along the grainline so that the fabric drapes evenly on both sides.



- Pin the flounce to the waistline with the wrong side of the flounce facing the right side of the garment.



- Be sure to match the end markings at both ends.



### ***Step3: Finishing the button placket***

- Place the button placket facing with its right side against the wrong side of the front edge and stitch it in place.



- Press the seam into shape and lightly trim the seam allowances to reduce bulk.



- Turn the facing to the outside and carefully press the front edge.



- Fold the seam allowance of the facing to the inside

- 



- And topstitch close to the edge, catching the flounce in the seam at the same time.



- Position both button plackets so that they overlap correctly.



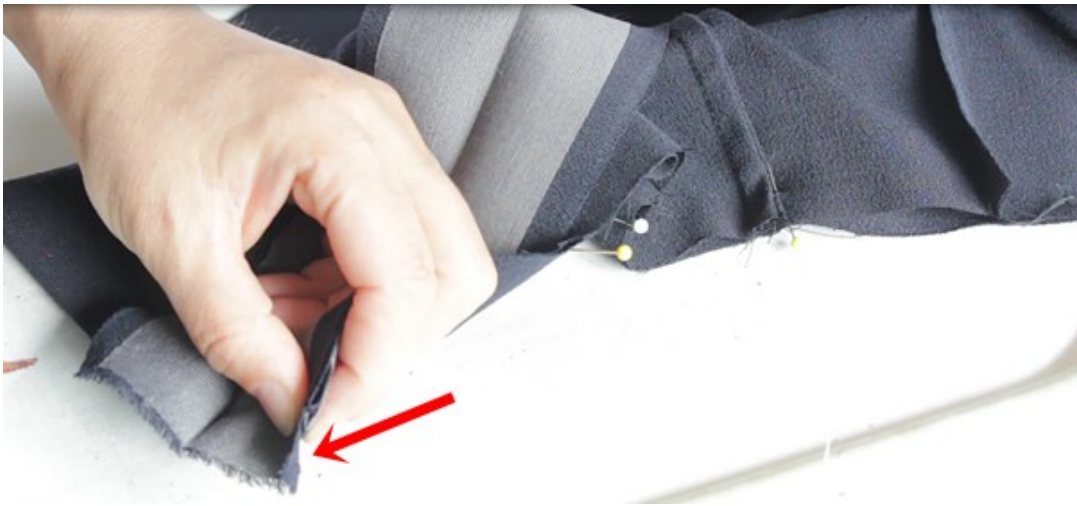
- Check the lower edge and trim or adjust it if necessary to ensure an even finish.



---

#### ***Step4: Sewing waistband***

- Place the waistband with its right side against the wrong side of the skirt.
- Leave the seam allowances extending beyond both ends of the waistband.
- Press all darts toward the side seams and all side seams toward the back skirt.



- Stitch the waistband to the skirt and press the seam allowances toward the waistband.



- Sew the two ends of the waistband closed.
- Trim the seam allowances diagonally at the corners to reduce bulk.



- Turn the waistband right side out.
- Fold the raw edge of the inner waistband to the inside.
- Fold the waistband over the waist seam and topstitch close to the edge to secure it in place.



Finally, it is ready for sewing the buttonholes and attach the buttons.



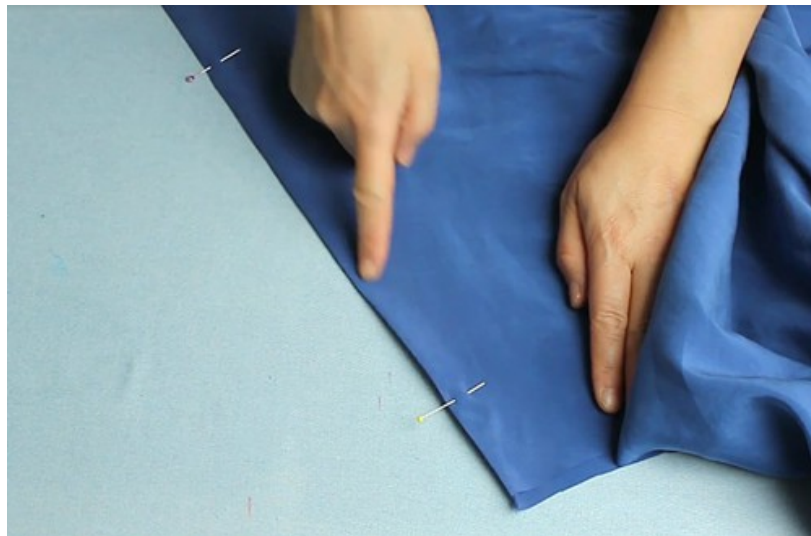
### **Step5: Sewing skirt pieces**

#### **Side Seam (French Seam)**

- Place the skirt pieces wrong sides together along the side seam.
- Sew the first seam with a seam allowance of approximately 0.5 cm (¼").
- Trim the seam allowances carefully and turn the pieces.



- Shape the edges neatly and press them flat.
- Sew a second seam with a seam allowance of approximately 1 cm ( $\frac{3}{8}$ ").



*The raw edges are now neatly enclosed within the French seam.*

### **Skirt Hem**

- Fold the entire bias strip in half lengthwise and shape it .



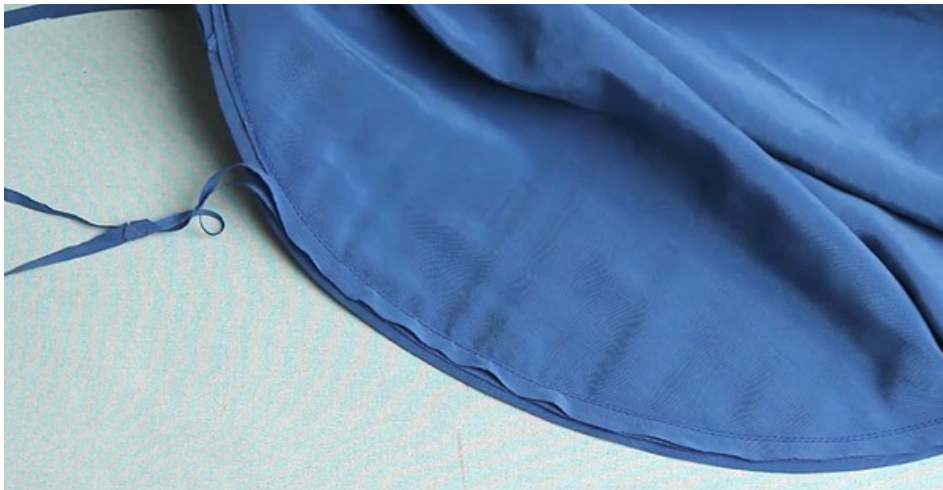
- Place the bias strip right sides together with the hem edge and stitch it in place.



- Fold the bias strip outward and understitch close to the seam line.



- Trim the seam allowances.



- Press the bias strip to the inside so that the seam rolls slightly inward and is not visible from the outside.

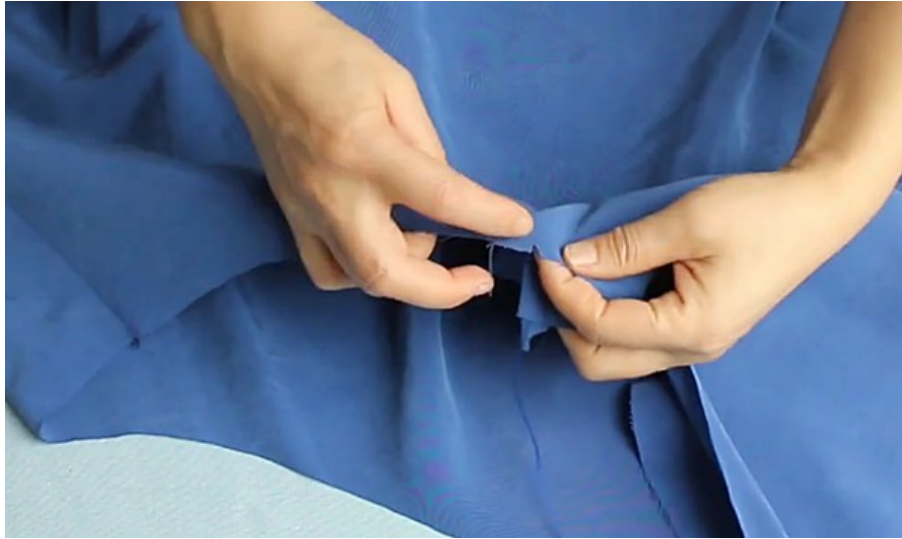


- Fold under the inner edge of the bias strip and topstitch close to the folded edge to secure it.



### **Open Side Seam Edge**

- Align the skirt pieces according to the markings.



- One side edge of the front skirt panel will remain open at this stage.



- Fold this open edge along the side seam line and stitch it in place.



- Carefully trim the seam allowances.
- Fold the edge to the opposite side and topstitch close to the edge once again.



*This creates a clean and durable finish for the open edge.*



### ***Step 6: Connecting both skirt pieces***



- Carefully clip the seam allowances along the curved edges of the skirt piece so that both pieces can be aligned and pinned together neatly.



- Place the skirt piece and the upper skirt piece right sides together.
- Stitch the pieces together along the edge.



- Finish the seam with bias binding.
  - Finally, press the seam carefully into shape.
- 

## **Important to know!**

### **Fabric preparation:**

---

- Pre-washing the fabric to prevent later shrinkage
- For fabrics that cannot be pre-washed, use steam ironing to pre-shrink them
- Press the fabric before cutting to remove any creases or wrinkles
- Extra fabric may be required for matching plaids, stripes, or one-way design fabrics (directional prints). This also applies to fabrics with a nap, such as velvet
- Additional fabric is needed if you deviate from the cutting layout, for example, when cutting on the cross - grain

### **Pattern preparation:**

---

- Save the digital patterns to your computer
- To open the files, you will need the free Adobe Acrobat Reader
- Print the pattern at 100% scale (actual size) without any scaling or fit to page settings.
- Pattern print is available in DinA4, DinA0, and US Letter formats

- Print the first page first to check the 10cm x 10cm test square and measure it to ensure the scale is correct

## **Symbols:**

---

- Solid line : seamallowances
- Dashed line(- - - - -): seam line, and pleats, tucks and hemline
- HM – Center back
- VM – Center front
- Arrow(→): Grainline
- Triangle mark: Zipper placement (end or start of zipper)
- Dot mark: Button position
- Scissor: Cutting line for facing pieces, lining pieces, or patchwork
- Letters: matching points