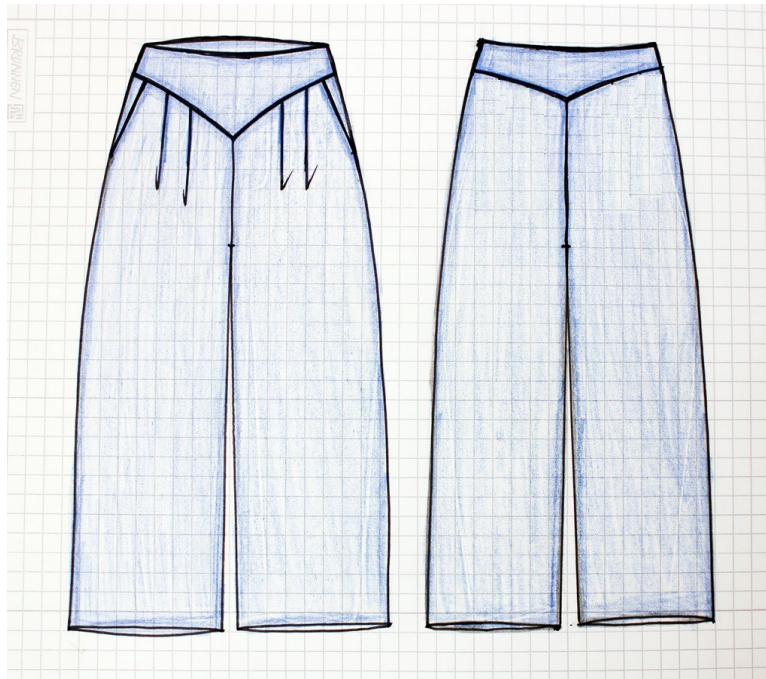


Sewing instruction pant „WIDE“



Women-Sizechart

Sizes Bodyheight			Bust circumference		Waist circumference		Hip circumference	
			cm	inch	cm	inch	cm	inch
Normal sizes	Long sizes	Short sizes						
162- 171cm	over 172cm	under 161cm						
Size.34	Size.68	Size.17	82cm	32 ½	66cm	26	89cm	35
Size.36	Size.72	Size.18	85cm	33 ½	69cm	27¼	93cm	36 ½
Size.38	Size.76	Size.19	88cm	34 ¾	72cm	28 ½	97cm	38
Size.40	Size.80	Size.20	92cm	36 ¼	76cm	30	101cm	39 ¾
Size.42	Size.84	Size.21	96cm	37 ¾	80cm	31 ½	105cm	41 ¼
Size. 44	Size.88	Size.22	100cm	39 ½	84cm	33	109cm	43
Size.46	Size.92	Size.23	106cm	41 ¾	90cm	35 ½	114cm	44 ¾
Size.48	Size.96	Size.24	112cm	44	96cm	37 ¾	119cm	46 ¾

The Bustcircumference determines the size for coats, jackets, shirts, dresses, blouses, tops, vests...!

The Hipcircumference determines the size for pants and skirts !

Pattern pieces

	<i>Pant fabric</i>	<i>Lining fabric</i>	<i>Interfacing</i>
1.	Front pant – 2x		Pocket opening Hemallowance
2.	Back pant - 2x		Hemallowance
3.	Front yoke – 1x	Front yoke facing– 1x	Facing piece complete
4.	Back yoke – 1x	Back yoke facing– 1x	Facing piece complete
5.	Front pocket bag - 2x		
6.		Front pocket lining -2x	

Material requirements

Material	Sizes 34-40	Sizes 42-48	Sizes 17-20	Sizes 21-24	Sizes 68-80	Sizes 84-96
Pant fabric	2,1 m		2,2m		2,3m	
Lining fabric	0,3m					
Interfacing	0,3m					
Bias tape	For finishing the seamallowances (approx. 5m)					
Zipper	1 piece – min. 25cm long					

Fabric recommendation:

This pattern is designed for **non-stretch woven fabrics**.

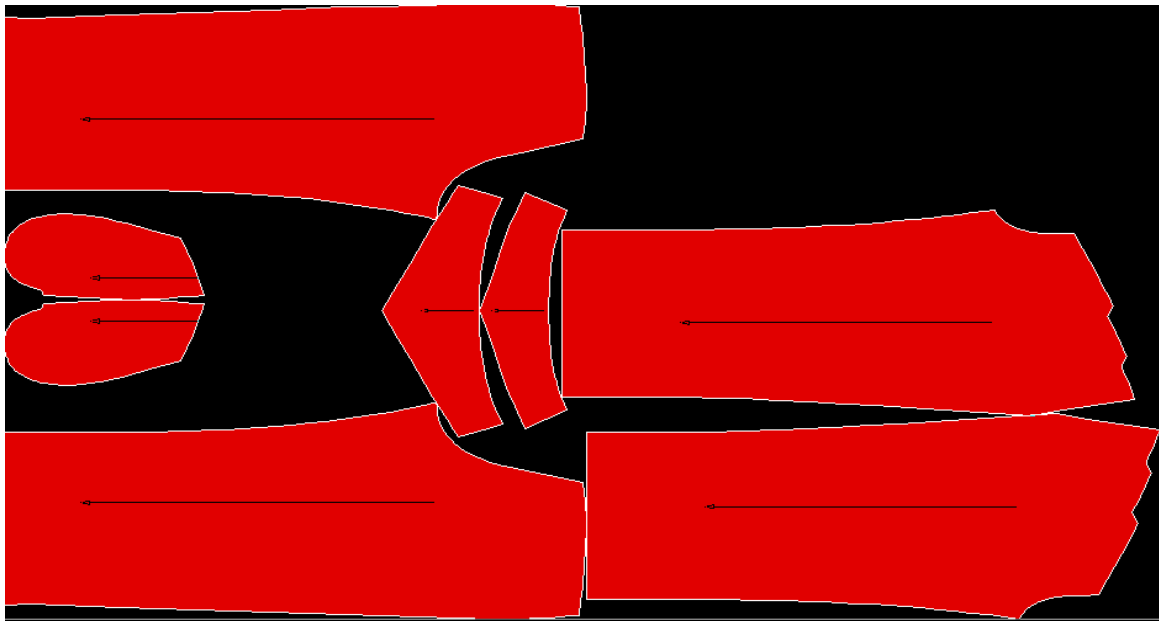
The fabric choice is very versatile:

- **Lightweight, airy, and softly draping fabrics** are ideal for summer wear
- **Medium-weight fabrics** such as denim, cotton, or corduroy are perfect for everyday wear
- **Warm wool fabrics** are especially suitable for winter garments

Pattern layout

- The pattern includes 1cm seamallowance (additional 0,5cm for french seam)
- Fabric width: 1,4m

For bigsizes: 42-48, 21-24, 84-96



For smallsizes: 42-48, 21-24, 84-96



Sewing steps

Preparation

Before you start sewing, take some time to prepare everything:

- Make bias binding strips (for finishing seam allowances)
- Fuse interfacing to the required pattern pieces
- Transfer all pattern markings onto the fabric
- Prepare your sewing machine (choose the right needle and matching thread for your fabric)
- Set stitch length (standard: approx. 2.5–3 mm)

? **Tip:** Keep all pieces neatly organized – this helps you stay on track.

? A tutorial video is available: *“Sewing Tutorial pant WIDE”*

Step 1: Front Pocket (French Seam)

1. Attach pocket lining

- Place the pocket lining **right sides together** onto the slanted pocket opening of the front piece
- Stitch along the pocket opening
- Trim the seam allowance slightly (this helps create a neat edge later)
- Turn the pocket lining to the outside
- Press the edge carefully
- Stitch the pocket lining close to the edge onto the seam allowance (understitch)

? This prevents the lining pocket from rolling outward.

2. Prepare pocket bag

- Place the pocket bag **wrong sides together** onto the pocket lining
 - Make sure all edges align exactly
-

3. First seam (French seam)

- Stitch around the pocket bag with a **narrow seam allowance (approx. 5–6 mm)**
 - Important: Leave the pocket opening unstitched
-

4. Trim seam allowances

- Trim seam allowances to approx. 2–3 mm
- Clip carefully into curves (do not cut into the seam!)

? This allows the seam to lie smoothly after turning.

5. Turn and press

- Turn the pocket bag so it is now **right sides together**
 - Shape the edges neatly
 - Press thoroughly
-

6. Second seam

- Stitch around the pocket bag again with approx. **1 cm seam allowance**
 - The raw edges are now fully enclosed
-

7. Secure pocket

- Lay the finished pocket flat towards the front
- Secure it:
 - at the top edge (towards yoke)
 - at the side seam

? You can baste or stitch it close to the edge.
This prevents shifting during further sewing.

Step 2: Assemble the Legs

Leg without zipper

- Place front and back pieces **right sides together**
 - Sew the inseam
 - Then sew the side seam
 - Finish both seam allowances with bias binding
-

Leg with zipper

- Sew the inseam
 - Finish seam allowances with bias binding
-

Crotch seam (joining both legs)

- Turn one leg right side out
- Insert it into the other leg (**right sides together**)

? The crotch seams should align exactly.

- Sew the crotch seam in one continuous seam
- Leave seam allowances open at both ends

? This makes attaching the yoke easier later.

- Finish seam allowances with bias binding
-

Step 3: Prepare the Yoke

Important: Do not use interfacing that is too stiff – otherwise the yoke may not sit properly and can ride up.

Outer yoke

- Mark the zipper sides
 - Place pieces **right sides together**
 - Sew side seams (leave zipper opening)
 - Press seam allowances open
-

Inner yoke

- Mark the zipper sides
- Place pieces **right sides together**
- Sew side seams
- Press seam allowances open
- Press the lower edge of the inner yoke **1 cm to the inside**

? **Tip:** Using a bias strip as a pressing guide helps create an even edge.

? This preparation ensures a clean finish on the inside (see video tutorial).

Step 4: Attach Outer Yoke

- Place the outer yoke **right sides together** onto the top edge of the trousers
 - Match all markings
 - Ease in any excess fabric from the back piece
 - Stitch all around
 - Press seam allowances upward towards the yoke
-

Step 5: Insert Zipper

- Place the open side seam **right sides together**
- Stitch the seam up to the zipper marking
- Baste the zipper opening
- Press seam allowances open
- Position the zipper centered underneath the basted zipper opening
- Pin and baste the zipper band in place
- Stitch using a zipper foot, as close as possible to the zipper teeth

? Take your time here – this is one of the trickier steps! (See video tutorial)

- Finish seam allowances with bias binding
-

Step 6: Attach Inner Yoke

- Sew inner and outer yoke together along the top edge (**right sides together**)
- Trim seam allowances and clip into curves where needed
- Understitch the inner yoke onto the seam allowance

? This helps the edge lie flat and keeps the inner yoke from rolling outward.

- Turn the yoke and press into shape
 - Sew the sides of the inner yoke to the zipper
 - Trim seam allowances at the corners
 - Turn everything neatly and press
 - Position the inner yoke on the inside
 - Pin it carefully in place together with the outer yoke
 - Stitch from the right side **in the ditch** (along the seam line)
-

Step 7: Sew Hem

- Press hem allowance to the inside
- Fold in the raw edge
- Press neatly
- Topstitch close to the edge

? Tip: Sew slowly to achieve an even hem.

? Additional hemming techniques (e.g. hand-finished hem) are shown in my video tutorials on Youtube!

Important to know!

Fabric preparation:

- Pre-washing the fabric to prevent later shrinkage
- For fabrics that cannot be pre-washed, use steam ironing to pre-shrink them
- Press the fabric before cutting to remove any creases or wrinkles
- Extra fabric may be required for matching plaids, stripes, or one-way design fabrics (directional prints). This also applies to fabrics with a nap, such as velvet
- Additional fabric is needed if you deviate from the cutting layout, for example, when cutting on the cross - grain

Pattern preparation:

- Save the digital patterns to your computer
- To open the files, you will need the free Adobe Acrobat Reader
- Print the pattern at 100% scale (actual size) without any scaling or fit to page settings.
- Pattern print is available in DinA4, DinA0, and US Letter formats
- Print the first page first to check the 10cm x 10cm test square and measure it to ensure the scale is correct

Symbols:

- Solid line : seam allowances
- Dashed line(- - - - -): seam line, and pleats, tucks and hemline
- HM – Center back
- VM – Center front
- Arrow(→): Grainline
- Triangle mark: Zipper placement (end or start of zipper)
- Dot mark: Button position
- Scissor: Cutting line for facing pieces, lining pieces, or patchwork
- Letters: matching points