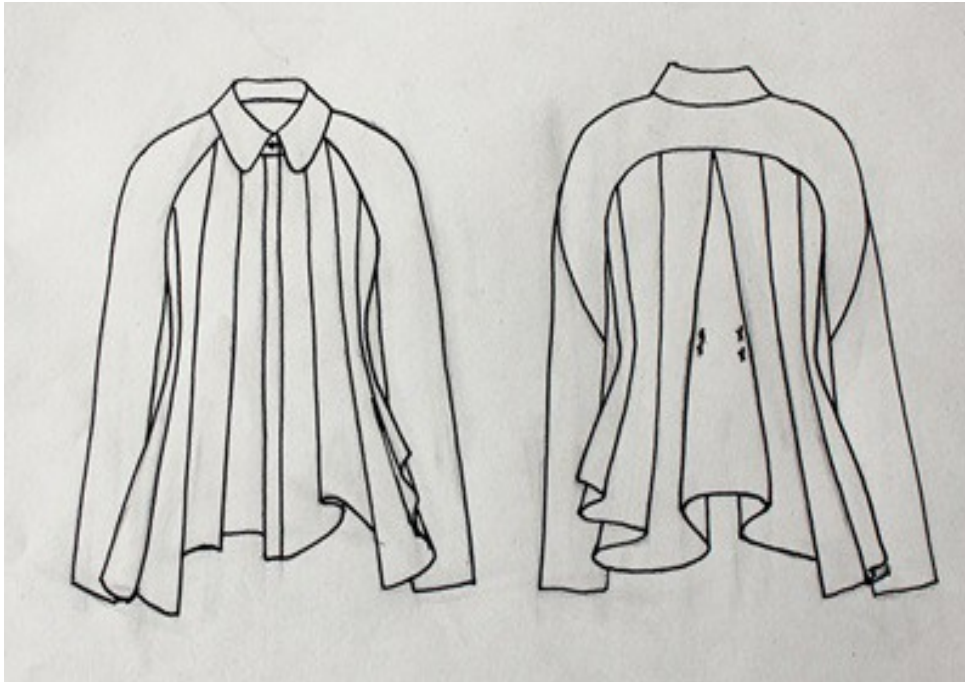


Shirt-blouse „JOKER“



Women-Sizechart

Sizes Bodyheight			Bust circumference		Waist circumference		Hip circumference	
Normal sizes	Long sizes	Short sizes	cm	inch	cm	inch	cm	inch
162- 171cm	over 172cm	under 161cm						
Size.34	Size.68	Size.17	82cm	32 ¼	66cm	26	89cm	35
Size.36	Size.72	Size.18	85cm	33 ½	69cm	27¼	93cm	36 ½
Size.38	Size.76	Size.19	88cm	34 ¾	72cm	28 ½	97cm	38
Size.40	Size.80	Size.20	92cm	36 ¼	76cm	30	101cm	39 ¾
Size.42	Size.84	Size.21	96cm	37 ¾	80cm	31 ½	105cm	41 ¼
Size. 44	Size.88	Size.22	100cm	39 ½	84cm	33	109cm	43
Size.46	Size.92	Size.23	106cm	41 ¾	90cm	35 ½	114cm	44 ¾
Size.48	Size.96	Size.24	112cm	44	96cm	37 ¾	119cm	46 ¾

The Bustcircumference determines the size for coats, jackets, shirts, dresses, blouses, tops, vests...!

The Hipcircumference determines the size for pants and skirts !

Pattern pieces

Shirt fabric

- Front piece left- 1x
- Front piece right - 1x
- Back piece - 1x
- Front sleeve - 2x
- Back sleeve - 1x im Stoffbruch

Interfacing

- Button placket
- Button placket
- Collar -2x complete
- Collarstand - 2x complete

Material requirements

Material	Sizes 34-40	Sizes 42-48	Sizes 17-20	Sizes 21-24	Sizes 68-80	Sizes 84-96
Outer fabric	2,1m	2,1m	2m	2m	2,3m	2,3m
Interfacing	0,1m					
Buttons : 6 pieces						

Fabric Recommendation

This design works best in shirting and blouse fabrics with a slight structure and a soft drape.

The fabric should provide enough stability for the collar, button placket, and the graphic silhouette, while still allowing the folds to fall softly and elegantly.

Recommended Fabrics

Cotton-Viscose Blends

- enough structure for shirt collars and button plackets
- soft and fluid drape
- ideal for deep and flowing pleats

Medium-Weight Crêpe

- adds depth and movement
- wrinkles less than pure viscose

- especially beautiful for asymmetrical pleats and folds

Tencel / Lyocell

- softer and more fluid than classic cotton poplin
- more structured than viscose
- creates elegant and clean-looking folds

Fine Cotton Satin

- smooth and refined surface
- slight body and structure
- feminine yet modern appearance

Cotton Poplin

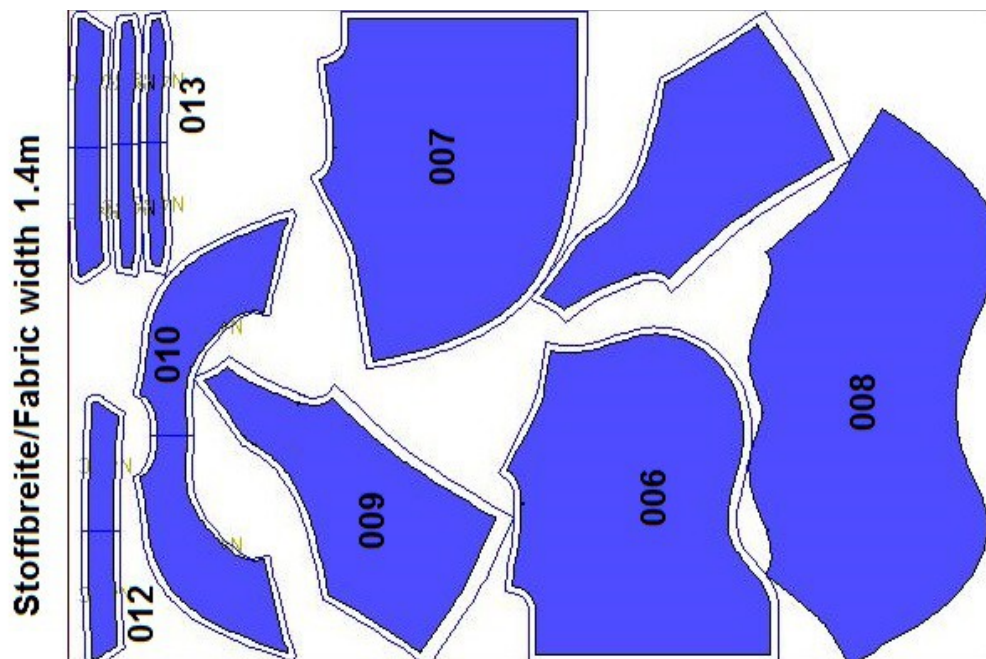
- ideal for crisp and graphic folds
- has more body and structure
- pleats appear more sculptural and can stand away slightly from the body

Original Fabric:

The original sample was made in cotton poplin.

Layplan

All pattern pieces include 1 cm seam allowances



Sewing steps

Step1: Preparation

- Fuse interfacing to the collar, collar stand, and button plackets.
 - Transfer all markings onto the fabric.
 - Check my helpful Youtube-Tutorials : <https://www.youtube.com/@Okistyle-sewing>
-

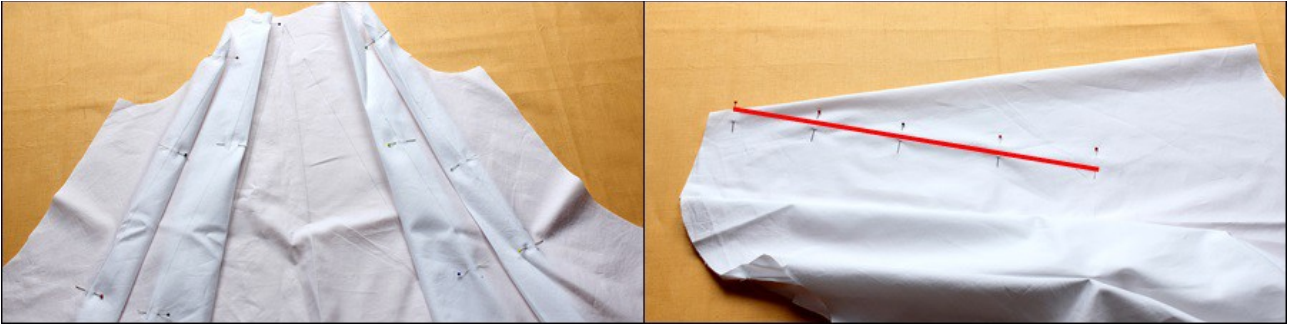
Step2: Darts

- Mark all dart lines on the wrong side of the fabric using a water-soluble pen or tailors chalk for accurate sewing.
- Sew all darts on the front and back pieces except for the center back dart.
- Secure the seam ends carefully with backstitches.
- Press the darts toward the side seams.



Step3: Back middle dart

- Sew the center back dart on the right side of the fabric.
- Press the dart bulk evenly to both sides of the seam and shape carefully.



- Secure both dart ends by hand with a few cross stitches.



Step4: Sewing sleeve- Underarm seam

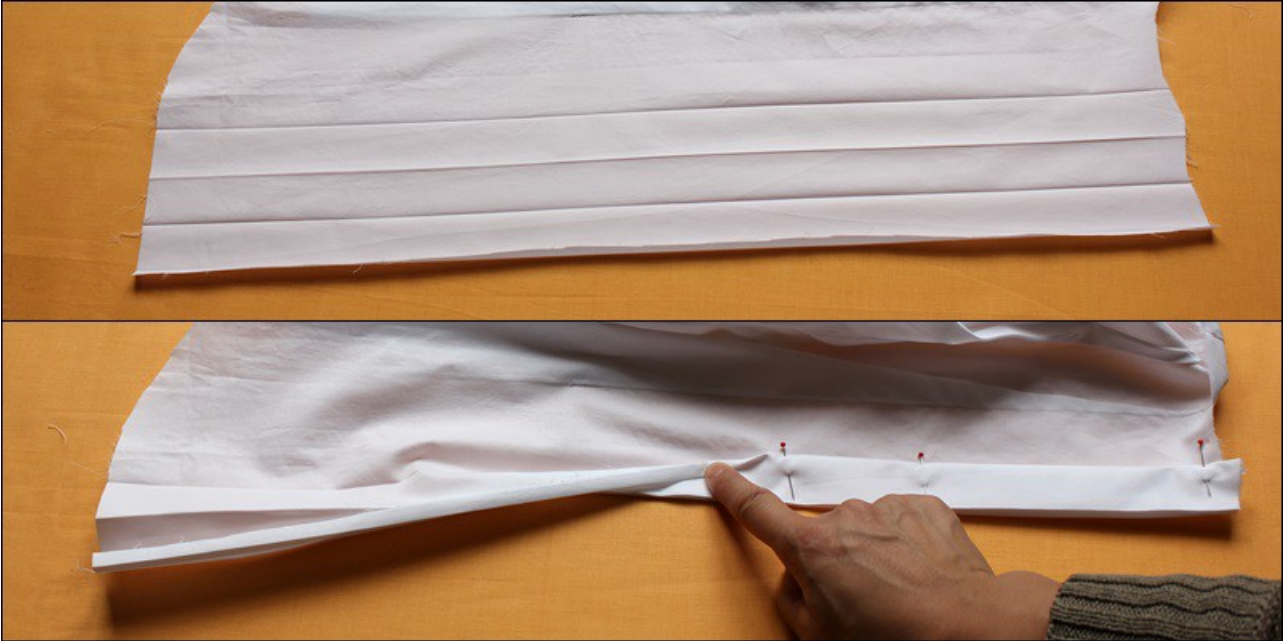
Right front piece

- Fold the button placket to the inside along the front edge and press.
- Turn the raw edge under, pin, and topstitch close to the edge.



Left front piece

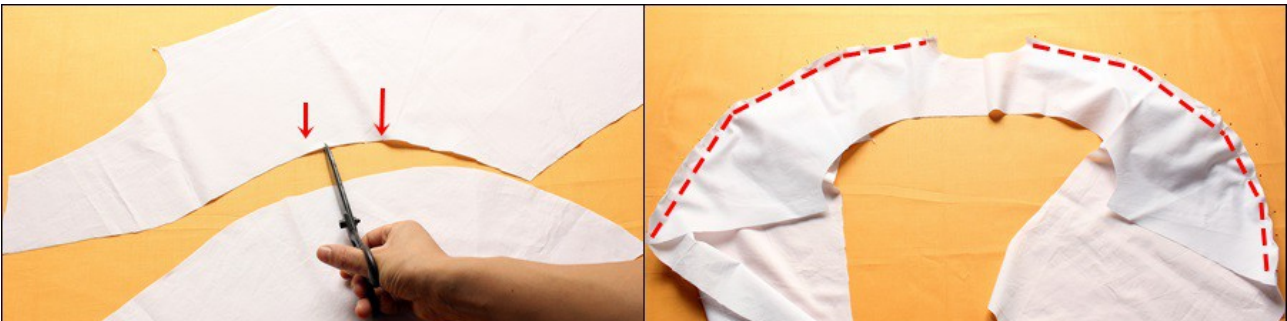
- Fold the button placket along all fold lines and press carefully.
- Fold the placket to the inside along the front edge and second fold line. Turn the raw edge under, pin, and baste in place.
- Topstitch close to the basting line from the wrong side of the fabric, making sure all layers are caught evenly.



- Sew all buttonholes at the marked positions.

Step5: Sleeve and sideseams

- Clip the seam allowance at the curved area of the front sleeve.
- Place the sleeve pieces right sides together and sew the shoulder seams.
- Finish the seam allowances together and press them toward the front.



- Sew the underarm sleeve seams and finish the seam allowances.
- Place front and back pieces right sides together and sew the side seams. Finish

the seam allowances.



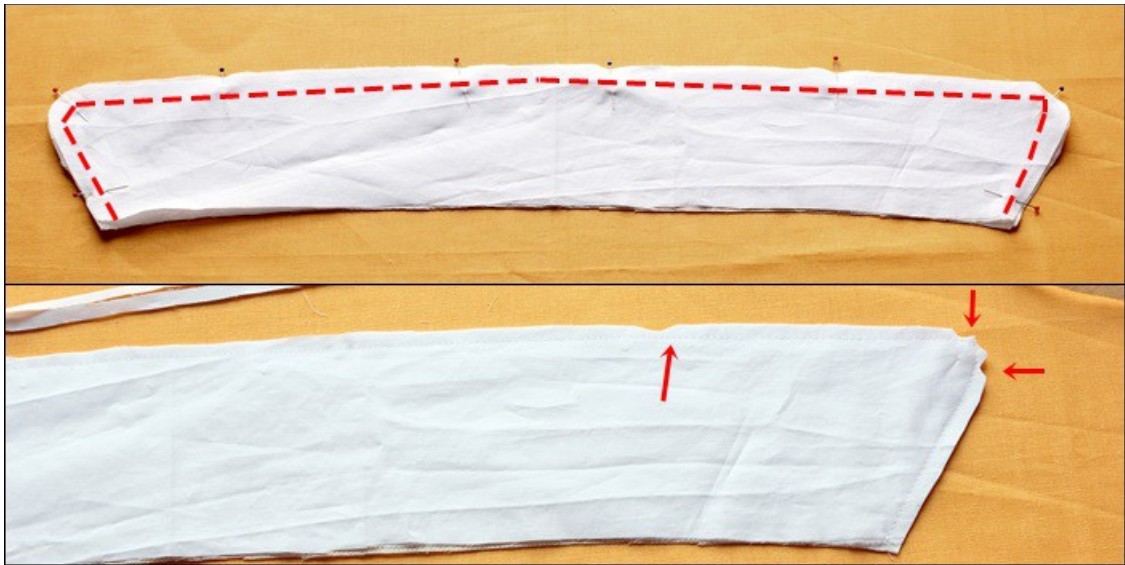
- Attach the sleeves to the body, right sides together, and sew the sleeve seams. Finish the seam allowances together.



Step6: Sewing collar

Collarstand

- Fuse interfacing to the wrong side of the upper collar.
- Place upper and lower collar right sides together and sew the side and outer edges.
- Trim and notch the seam allowances at the corners.



- Turn the collar right side out, shape carefully, and press.
- Topstitch close to the outer edges.



Collarstand

- Fuse interfacing to the wrong side of the collar stand.
- Pin both collar stands and the collar together, right sides facing, between the markings.
- Sew the side and collar stand seams. Trim seam allowances and clip the corners. Turn and press carefully.



- Pin the collar stand to the neckline, right sides together, and baste in place.
- Stitch along the basting line. Trim seam allowances and press them toward the collar.



- Fold the lower edge of the collar stand to the inside, covering the seam slightly, pin in place, and topstitch close to the edge.



Step7: Hem

- Clip the seam allowance at strongly curved areas and press the hem allowance to the inside.



- Trim the pressed hem allowance slightly, fold the hem again to the inside, pin, and baste in place.
- Since the hem is curved, basting before stitching is recommended. Topstitch close to the folded edge.



- Fold the sleeve hem to the inside, turn the raw edge under, and topstitch close to the edge.



Important to know!

Fabric preparation:

- Pre-washing the fabric to prevent later shrinkage
- For fabrics that cannot be pre-washed, use steam ironing to pre-shrink them
- Press the fabric before cutting to remove any creases or wrinkles
- Extra fabric may be required for matching plaids, stripes, or one-way design fabrics (directional prints). This also applies to fabrics with a nap, such as velvet
- Additional fabric is needed if you deviate from the cutting layout, for example, when cutting on the cross - grain

Pattern preparation:

- Save the digital patterns to your computer
- To open the files, you will need the free Adobe Acrobat Reader
- Print the pattern at 100% scale (actual size) without any scaling or fit to page settings.
- Pattern print is available in DinA4, DinA0, and US Letter formats
- Print the first page first to check the 10cm x 10cm test square and measure it to ensure the scale is correct

Symbols:

- Solid line : seam allowances
- Dashed line(- - - - -): seam line, and pleats, tucks and hemline
- HM – Center back
- VM – Center front
- Arrow(→): Grainline
- Triangle mark: Zipper placement (end or start of zipper)
- Dot mark: Button position
- Scissor: Cutting line for facing pieces, lining pieces, or patchwork
- Letters: matching points