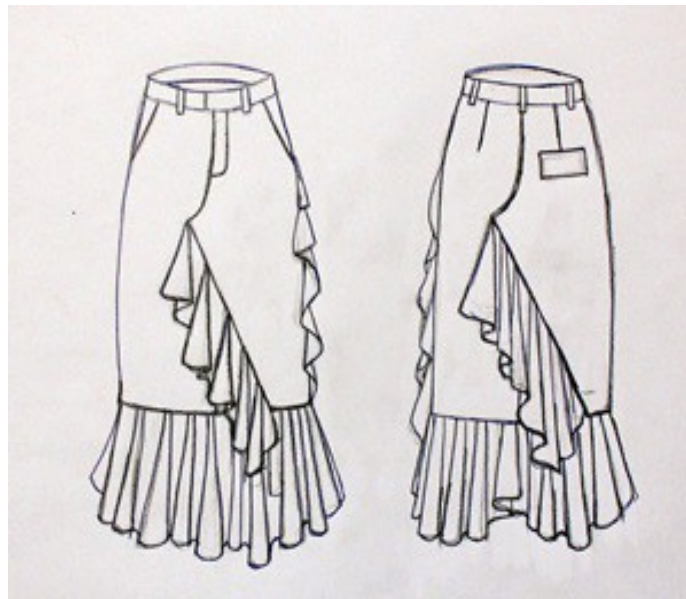


## Skirt „SASCHA“



### Women-Sizechart

| Sizes        |            |             | Bust circumference |      | Waist circumference |      | Hip circumference |      |
|--------------|------------|-------------|--------------------|------|---------------------|------|-------------------|------|
| Normal sizes | Long sizes | Short sizes | cm                 | inch | cm                  | inch | cm                | inch |
| 162-171cm    | over 172cm | under 161cm |                    |      |                     |      |                   |      |
| Size.34      | Size.68    | Size.17     | 82cm               | 32 ¼ | 66cm                | 26   | 89cm              | 35   |
| Size.36      | Size.72    | Size.18     | 85cm               | 33 ½ | 69cm                | 27¼  | 93cm              | 36 ½ |
| Size.38      | Size.76    | Size.19     | 88cm               | 34 ¾ | 72cm                | 28 ½ | 97cm              | 38   |
| Size.40      | Size.80    | Size.20     | 92cm               | 36 ¼ | 76cm                | 30   | 101cm             | 39 ¾ |
| Size.42      | Size.84    | Size.21     | 96cm               | 37 ¾ | 80cm                | 31 ½ | 105cm             | 41 ¼ |
| Size. 44     | Size.88    | Size.22     | 100cm              | 39 ½ | 84cm                | 33   | 109cm             | 43   |
| Size.46      | Size.92    | Size.23     | 106cm              | 41 ¾ | 90cm                | 35 ½ | 114cm             | 44 ¾ |
| Size.48      | Size.96    | Size.24     | 112cm              | 44   | 96cm                | 37 ¾ | 119cm             | 46 ¾ |

*The Bustcircumference determines the size for coats, jackets, shirts, dresses, blouses, tops, vests...!*

*The Hipcircumference determines the size for pants and skirts !*

### **Pattern pieces**

| <b>Nr.</b> | <b>Skirt fabric</b>  | <b>Lining fabric</b>                                       | <b>Interfacing</b>             |
|------------|--|--|--------------------------------|
| 4          | Front skirt right – 1x   | Front skirt - 2x<br>Cut from pattern pieces 004<br>und 008 | Pocketopening,<br>Hemallowance |
| 5          | Front skirt left – 1x  |  | Pocketopening,<br>Hemallowance |
| 6          | Back skirt right – 1x  | Back skirt– 2x<br>cut from pattern piece 006               | Pocketopening,<br>Hemallowance |
| 7          | Back skirt left – 1x   |  | Hemallowance                   |
| 8          | Front pocket – 2x  |  |                                |
| 9          |  | Back pocket bag-2x   | Pocketopening                  |
| 10         | Pocket flap – 1x   |  | complete                       |
| 11         | Front waistband - 4x   |  | complete                       |
| 12         | Back waistband - 2x  |  | complete                       |
| 13         |  | Front pocket lining- 2x                                    |                                |
| a          | Flounce for front and back center seams - 2x<br>Diameter: 54cm, Inside Diameter: 14cm  |  |                                |
| b          | Flounce for sideseam - 1x<br>Diameter: 46cm, Inside diameter: 16cm   |  |                                |
| c          | Flounce for lining skirt - 4x<br>Diameter: 60cm<br>Inside Diameter:<br>Sizes. 34/17/68: 7cm<br>Sizes. 36/18/72: 7,5cm<br>Sizes. 38/19/76: 8cm<br>Sizes. 40/20/80: 8,5cm<br>Sizes. 42/21/84: 9cm<br>Sizes. 44/22/88: 9,5cm<br>Sizes. 46/23/92: 10cm |  |                                |

|   |  |
|---|--|
|   | Sizes. 48/24/96: 10,5cm  |
| d | Belt loops – 5x (interfacing!)<br>Size: 6cm width, 10cm long       |
| e | Front zipper fly – 1x (Interfacing!)<br>cut from pattern piece 005 |

### **Material requirements**

- If all pattern pieces cut from same fabric, you will need following fabric requirement(Grey skirt)

| <b>Material</b> | <b>Sizes<br/>34-40</b>   | <b>Sizes<br/>42-48</b> | <b>Sizes<br/>17-20</b> | <b>Sizes<br/>21-24</b> | <b>Sizes<br/>68-80</b> | <b>Sizes<br/>84-96</b> |
|-----------------|--------------------------|------------------------|------------------------|------------------------|------------------------|------------------------|
| Outer fabric    | 2,6 m                    | 2,8m                   | 2,6m                   | 2,8m                   | 2,6m                   | 2,8m                   |
| Lining fabric   | 1m                       |                        |                        |                        |                        |                        |
| Interfacing     | 1m                       |                        |                        |                        |                        |                        |
| Button          | 1 piece                  |                        |                        |                        |                        |                        |
| Zipper          | 1 piece – min. 15cm long |                        |                        |                        |                        |                        |

- If you use a contrast fabric for the ruffles, waistband, and pocket flap, please refer to the following fabric requirements for the main fabric and contrast fabric (Skirt “Dark Blue/Black”)

| <b>Material</b> | <b>Sizes<br/>34-40</b> | <b>Sizes<br/>42-48</b> | <b>Sizes<br/>17-20</b> | <b>Sizes<br/>21-24</b> | <b>Sizes<br/>68-80</b> | <b>Sizes<br/>84-96</b> |
|-----------------|------------------------|------------------------|------------------------|------------------------|------------------------|------------------------|
| Skirt fabric    | 1,3m                   |                        | 1,2m                   |                        | 1,4m                   |                        |
| Contrast fabric | 2,1m                   |                        |                        |                        |                        |                        |

#### **Fabric recommendation:**

This pattern is designed for **non-stretch woven fabrics**.

The fabric choice is very versatile:

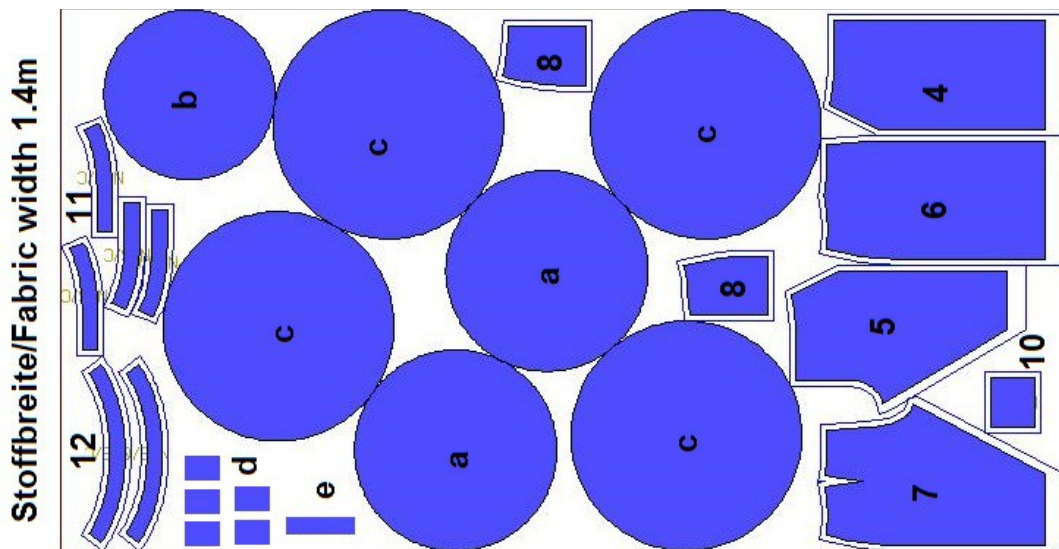
- **Lightweight, airy, and softly draping fabrics** are ideal for summer wear
- **Medium-weight fabrics** such as denim, cotton, or corduroy are perfect for everyday wear
- **Warm wool fabrics** are especially suitable for winter garments

For the ruffles, choose lightweight fabrics to keep the skirt from becoming too heavy. Wrinkle-resistant materials work best.

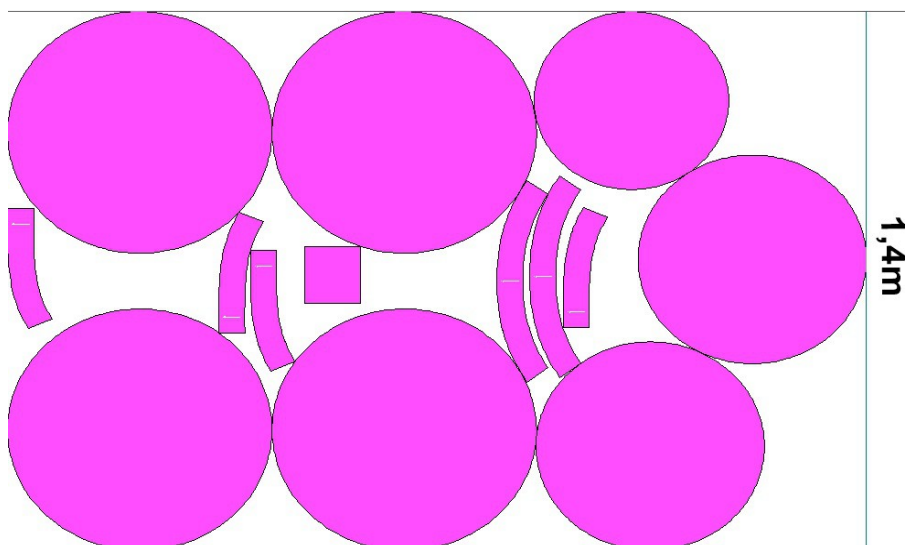
### Pattern layout

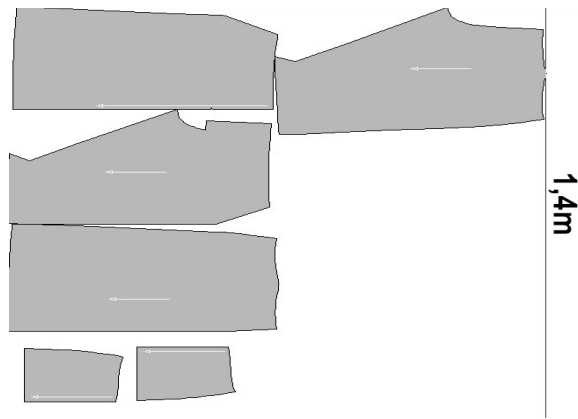
- The pattern includes 1cm seamallowance (additional 0,5cm for french seam )
- Fabric width: 1,4m

all patterns are from same fabric:



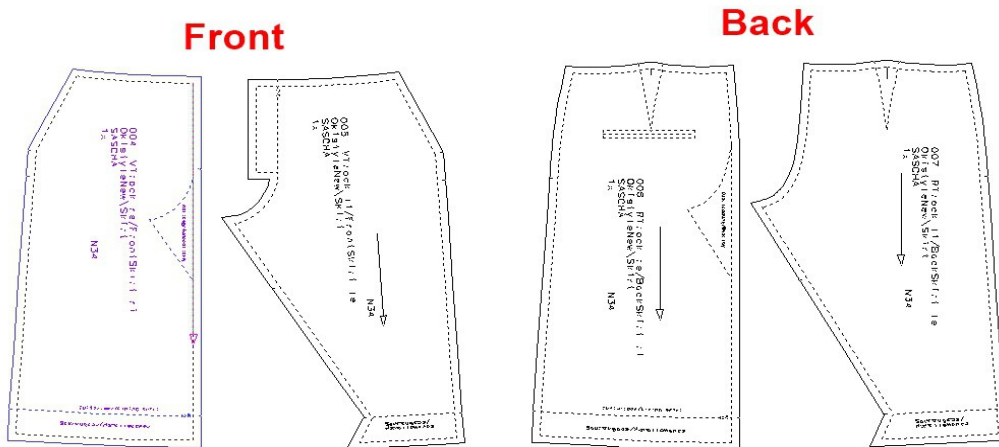
Mixed-fabrics:



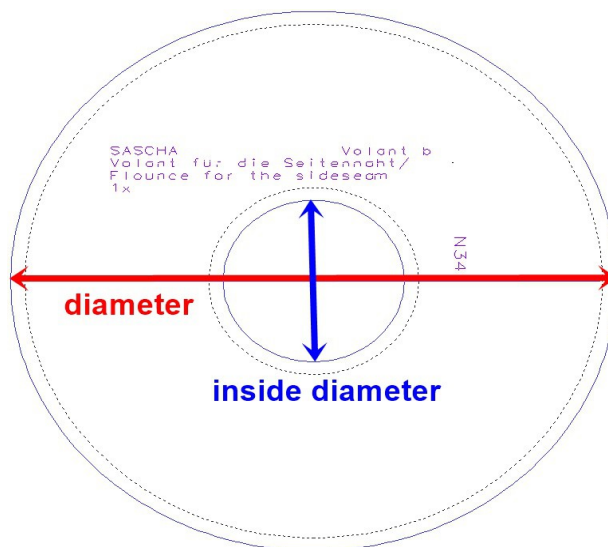


### Helps for cutting

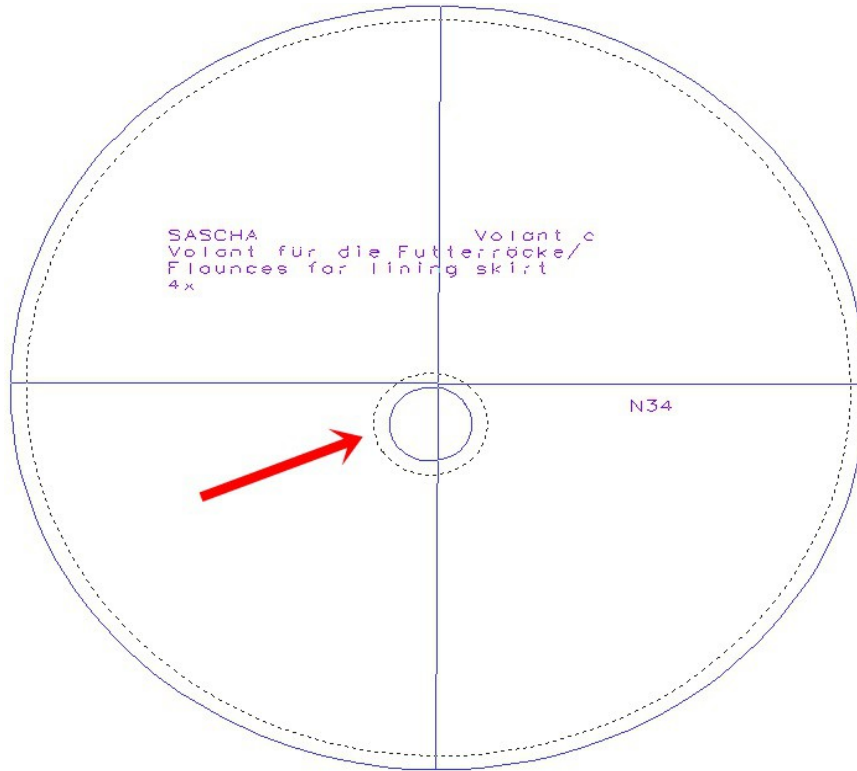
- The pattern pieces are asymmetrical. Make sure to cut all left and right pieces correctly.



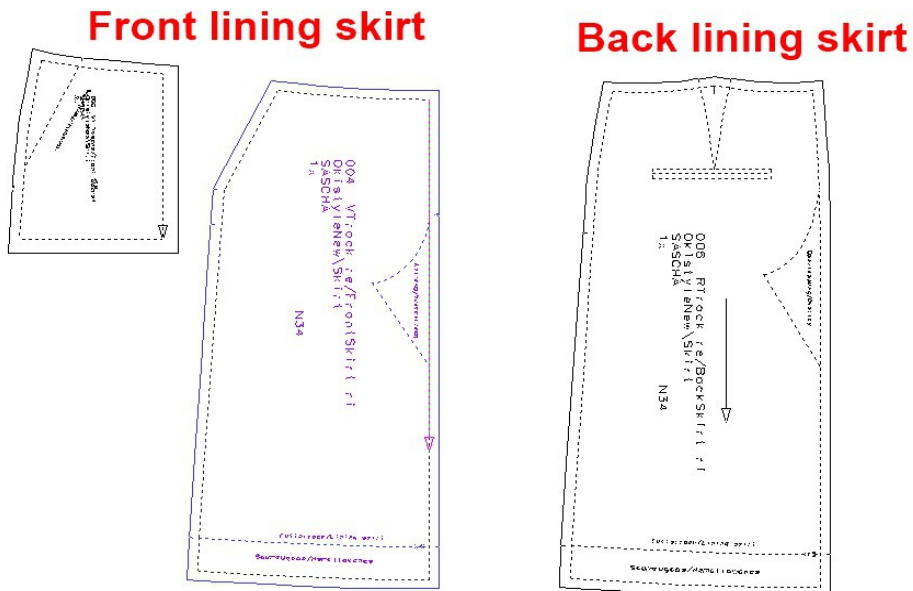
- All ruffle pieces are cut as circles with the specified diameters. The inner diameter varies depending on size – see pattern pieces.



- The inner circle is positioned slightly off-center to achieve an uneven hemline. This results in a more balanced drape, with the ruffles narrower at the top and wider at the bottom.



- SewingThe lining pieces are developed from the outer fabric pattern pieces. However, the lining skirt is constructed symmetrically.



## Sewing steps

### ? Preparation- before you begin

Before you begin sewing, prepare everything carefully:

- Fuse interfacing to the corresponding pattern pieces
- Transfer all markings from the pattern onto the fabric
- Prepare your sewing machine (choose the correct needle and thread)
- Set stitch length (standard: 2.5–3 mm)

**Tip:** Arrange all pieces neatly before starting – this helps keep an overview.

A video tutorial “Sewing Instructions Skirt SASCHA” is also available in Youtube!

### ?Video-Tutorials on Youtube

- On my YouTube channel, you will find various tutorials covering different sewing techniques in multiple variations. Please take a look at the videos.
- All tutorials are spoken in German, but you can enable English subtitles. I try to demonstrate each step as clearly and in as much detail as possible.

#### [Youtube-Tutorials](#)

- On my website, all tutorials are clearly organized by category and number, making it easy to find exactly what you need.
- 

### Step 1: Front Slanted Pocket (French Seam)

#### **1. Attach pocket facing**

- Place the pocket facing right sides together with the slanted pocket opening of the front piece
- Stitch along the opening
- Trim the seam allowance slightly
- Turn the facing outward and press the edge carefully
- Understitch close to the seam

#### **2. Prepare pocket bag**

- Place the pocket bag wrong sides together with the facing
- Align all edges precisely

#### **3. First seam**

- Stitch around the pocket bag with a narrow seam allowance (approx. 5–6 mm)
- Leave the pocket opening unstitched

#### 4. Trim seam allowances

- Trim seam allowances to 2–3 mm
- Clip curves carefully

#### 5. Turn and press

- Turn the pocket bag so right sides are together
- Shape edges neatly and press

#### 6. Second seam

- Stitch again around with approx. 1 cm seam allowance

#### 7. Secure pocket

- Lay the pocket flat towards the front
  - Secure at the top edge and side seam (baste or topstitch)
- 

### **Step 2: Back Welt Pocket with Flap**

#### 1. Darts

- Sew darts according to markings and press towards center

#### 2. Prepare flap

- Fold flap right sides together (on fold)
- Stitch both edges (leave top edge open)
- Trim seam allowances and corners
- Turn, press, optionally topstitch

#### 3. Mark position

- Transfer pocket placement and cutting line on skirt

#### 4. Attach flap

- Place flap right sides together along the upper line of pocket marking
- Stitch in place along the line

#### 5. Attach pocket bag

- Stitch pocket bag right sides together along the lower marking
- Press seam allowances downward

## 6. Cut opening

- Slash between stitching lines
- Clip diagonally at ends (Y-shape)
- Turn pocket bag to inside
- Shape and press edges

## 7. Close pocket bag (French seam)

- Fold side seam allowances (small triangles) inward and stitch to pocket bag
- Sew pocket bag wrong sides together narrowly (approx. 5-6cm)
- Trim seam allowances
- Turn and sew again

## 8. Finishing

- Press pocket bag downward
  - Fold flap down
  - Optionally secure sides
- 

## **Step 3: Flounces (Volants) on Outer Skirt**

### 1. Prepare flounces

- Draw inner circle on each circles (slightly offset for an irregular drape if desired)
- Draw 2 curves from inner circle towards outer edge
- Cut along curves
- Finish flounce outer edge with rolled hem (overlock) or narrow hem
- Clip seam allowance along inner circle so you can sew easier

### 2. Attach flounces on front and back seam (slanted center seams)

- Pin flounces right sides together onto skirt pieces
- Do not catch seam allowance at crotch-like seam
- Overlap ends, stitch and finish seam allowances

### 3. Prepare crotch-like seams on front and back center

- Clip seam allowances along curves

### 4. Front and back pieces

- Sew both crotch-like seams
- Front: up to marking
- Back: from waist to marking

## 5. Side flounce

- Attach side flounce right sides together along side seam (single-sided)
- 

## **Step 4: Fly front Zipper**

### 1. Attach zipper (right side)

- Place the zipper right sides together under the right front piece, aligning the teeth with the fold line.
- Stitch in place using a zipper foot.
- Fold the zipper to the inside and press.

### 2. Prepare fly shield (underlap)

- Place the fly shield right sides together, stitch along the outer edge, turn right side out and press.

### 3. Attach fly shield

- Position the fly shield beneath the zipper on the left side and secure it in place.

### 4. Attach left front

- Lay the left front piece over the zipper, ensuring the zipper is fully covered. Stitch from the inside, catching the zipper and fly shield.

### 5. Topstitch fly

- From the right side, sew the characteristic curved topstitching to secure the zipper and fly shield.

### 6. Secure base

- Secure the bottom of the zipper with a bar tack.
- 

## **Step 5: Lining Skirt**

### 1. Skirt base

- Finish all vertical seam allowances
- Sew side and center seams
- Press seam allowances open

- Clip seam allowance at zipper corner

## **2. Flounces**

- Transfer and cut inner circle
- Clip seam allowances
- Sew all flounces together at side seams
- Finish seam allowances

## **3. Attach flounces**

- Stitch flounces right sides together to lining skirt hem
  - Finish seam allowances
  - Finish flounce hem with rolled hem (overlock) or narrow hem
  - Fold seam allowance at zipper inward and sew by hand
- 

## **Step 6: Waistband with Belt Loops**

### **1. Belt loops**

- Fold strip lengthwise, press edges inward
- Fold again and topstitch
- Cut into equal pieces

### **2. Attach loops**

- Pin loops to top edge (facing downward)
- Secure within seam allowance

### **3. Attach waistband**

- Sew waistband pieces together at side seams
- Attach outer waistband right sides together
- Press seam allowances upward

### **4. Close waistband**

- Place inner waistband right sides together
- Stitch along top edge
- Trim and clip seam allowances
- Understitch inner waistband
- Close side seams, turn and shape

### **5. Secure inner waistband**

- Fold inner edge inward
- Stitch in the ditch from right side or sew by hand

## 6. Finish belt loops

- Fold upward and secure with bar tacks

## 7. Closure

- Sew buttonhole
  - Attach button
- 

## **Step 7: Hem**

### 1. Finish edge

- Finish with overlock/zigzag  
or fold twice

### 2. Prepare hem

- Fold hem allowance inward and press
- Pin in place

### 3. Stitch hem

- Sew by hand (blind stitch) or machine
- 

## **Important to know!**

### Fabric preparation:

---

- Pre-washing the fabric to prevent later shrinkage
- For fabrics that cannot be pre-washed, use steam ironing to pre-shrink them
- Press the fabric before cutting to remove any creases or wrinkles
- Extra fabric may be required for matching plaids, stripes, or one-way design fabrics (directional prints). This also applies to fabrics with a nap, such as velvet
- Additional fabric is needed if you deviate from the cutting layout, for example, when cutting on the cross - grain

### Pattern preparation:

---

- Save the digital patterns to your computer
- To open the files, you will need the free Adobe Acrobat Reader
- Print the pattern at 100% scale (actual size) without any scaling or fit to page settings.
- Pattern print is available in DinA4, DinA0, and US Letter formats
- Print the first page first to check the 10cm x 10cm test square and measure it to ensure

the scale is correct

### Symbols:

---

- Solid line : seamallowances
- Dashed line(- - - - -): seam line, and pleats, tucks and hemline
- HM – Center back
- VM – Center front
- Arrow(→): Grainline
- Triangle mark: Zipper placement (end or start of zipper)
- Dot mark: Button position
- Scissor: Cutting line for facing pieces, lining pieces, or patchwork
- Letters: matching points