



10 cm x 10 cm

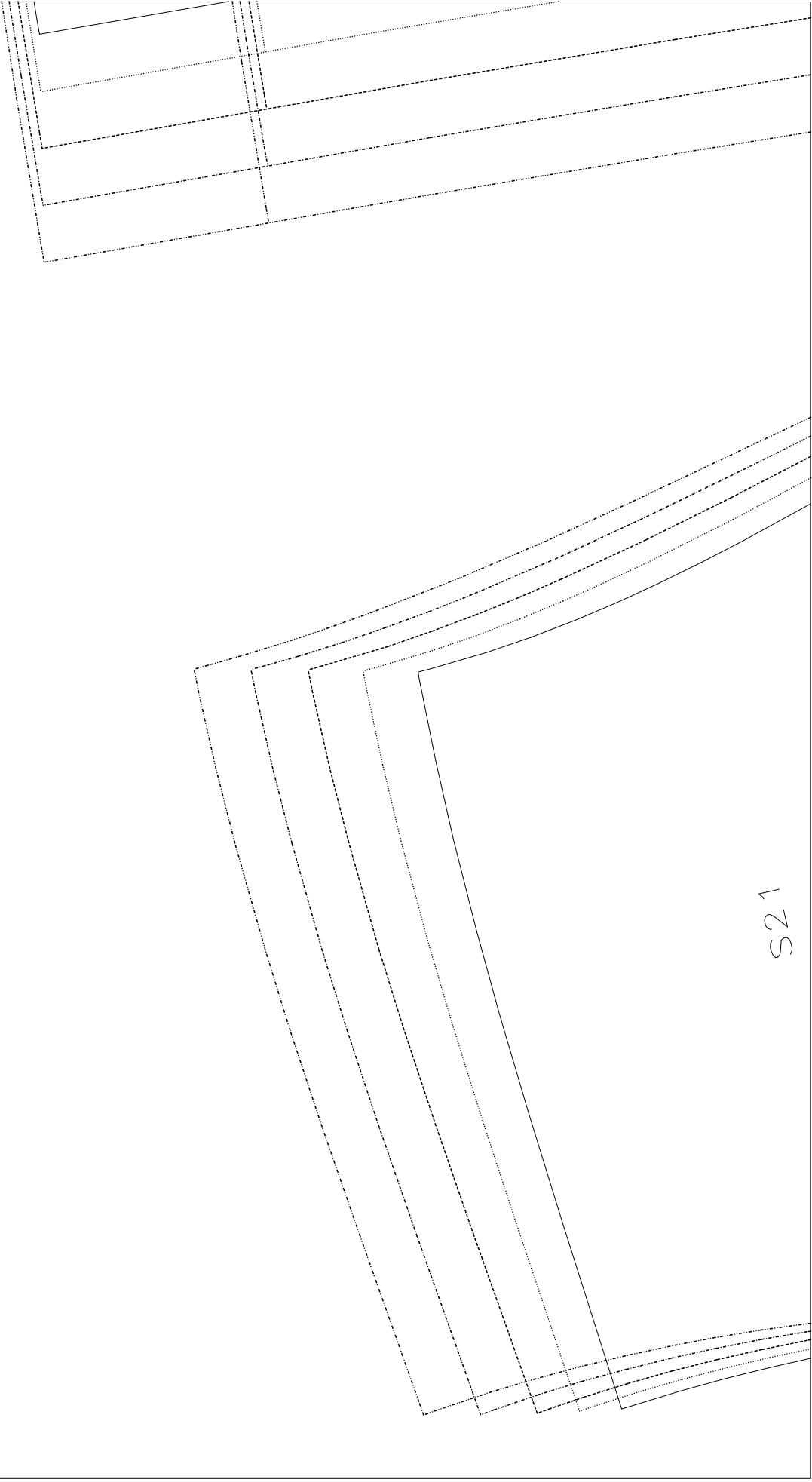
Samzu

(A, 01) : GES.mdi (..\OKI&CARD\Skirt\)

gabe/Hema l l owance

(A, 02) : GES.mdi (.. \OKI&CARDI\Skirt\)

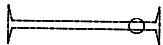
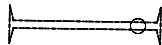
125



(A,03) : GES.mdl (..\OKI&CARDI\Skirt\)

Rock/Front skirt
1/Skirt

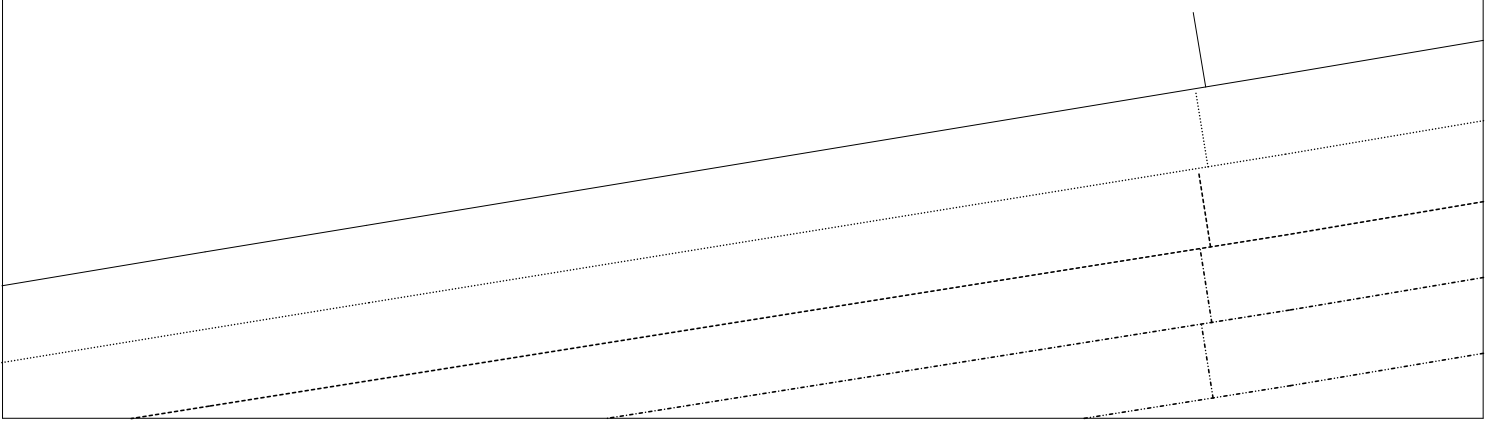
Umbuchlinie/Foldline



(B, 01): GES.mdi

(..\PK&CARD\Skirt\)

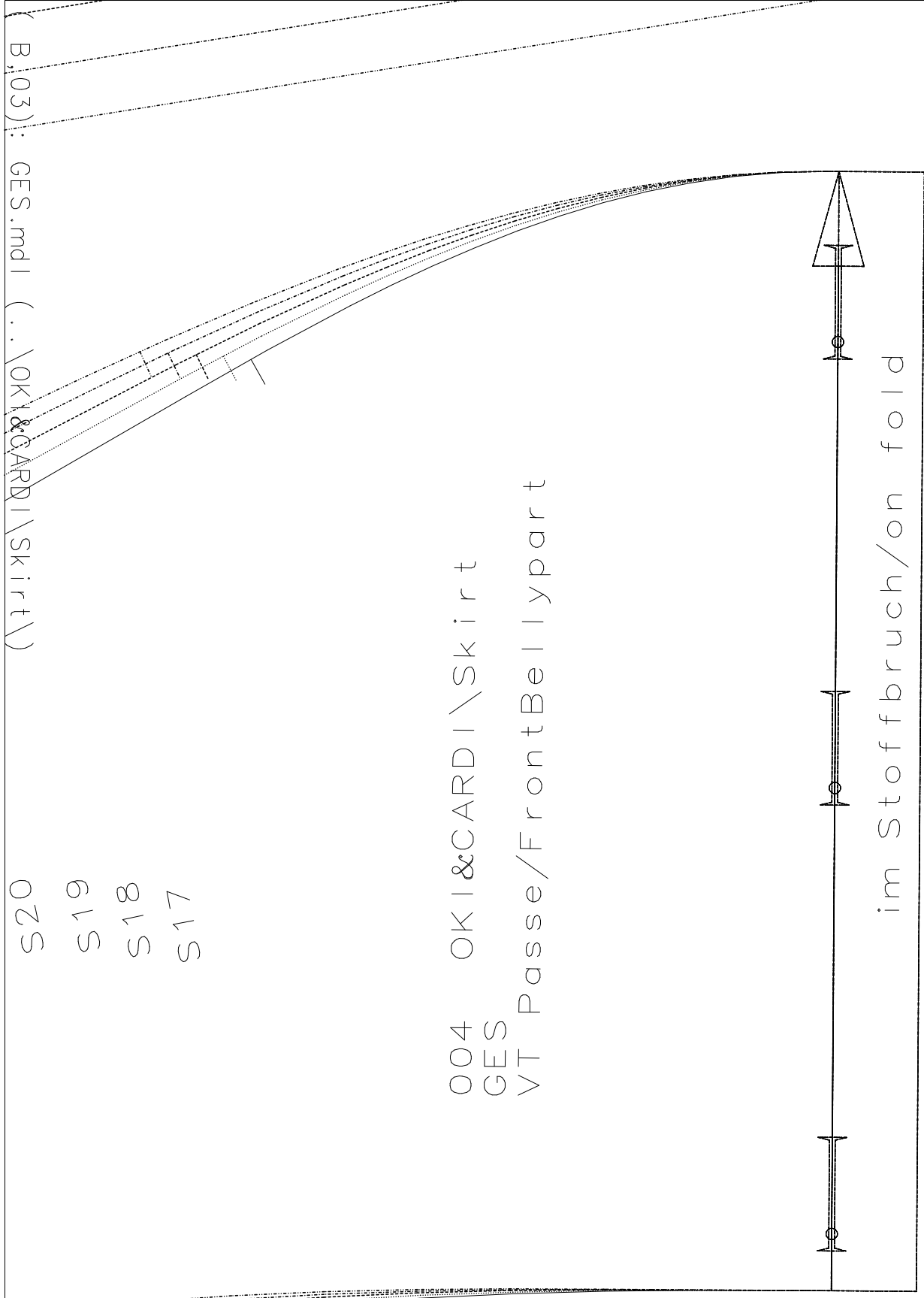
S17
S18
S19
S20
S21



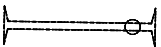
(B, 02) : GES.mdi (.. \OKI&CARDI\Skirt\)

S20
S19
S18
S17

004 OKI&CARDI\Skirt
GES
VT Passe/FrontBell ypart



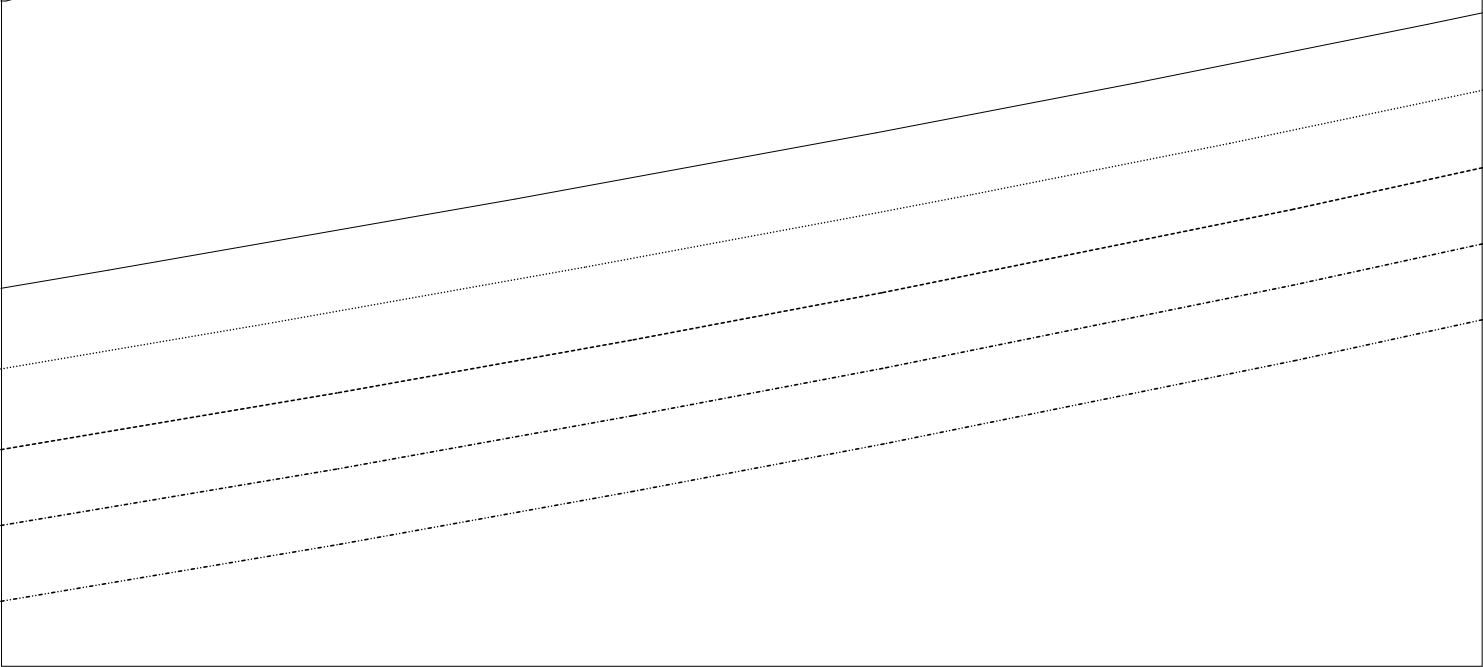
(C, 01) : GES.mdl (.. \OKI&CARD\Skirt\)



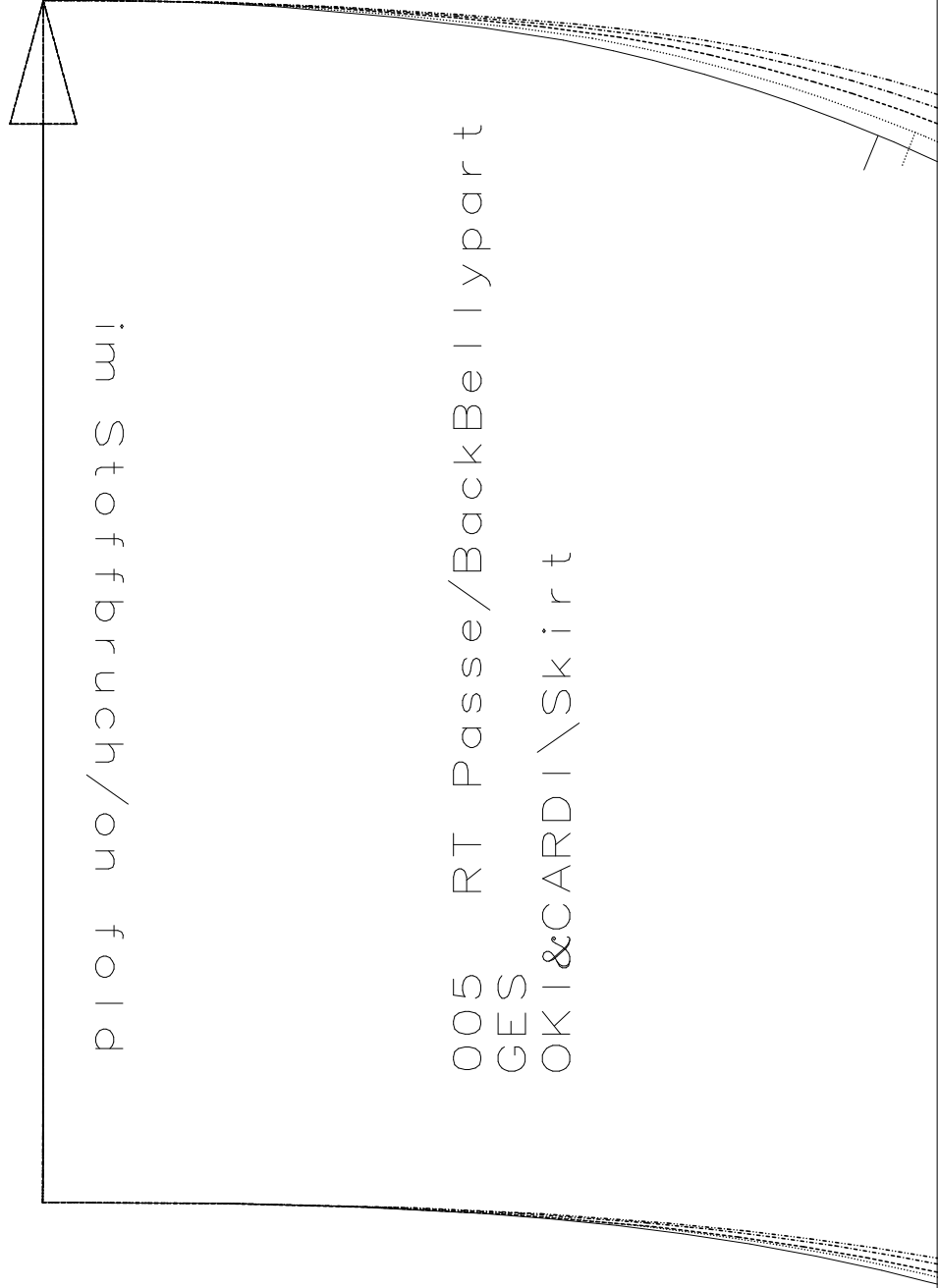
006
GES
OKI&CARD
VT

(C, 02) : GES.mdl (..\OKI&CARDI\Skirt\)

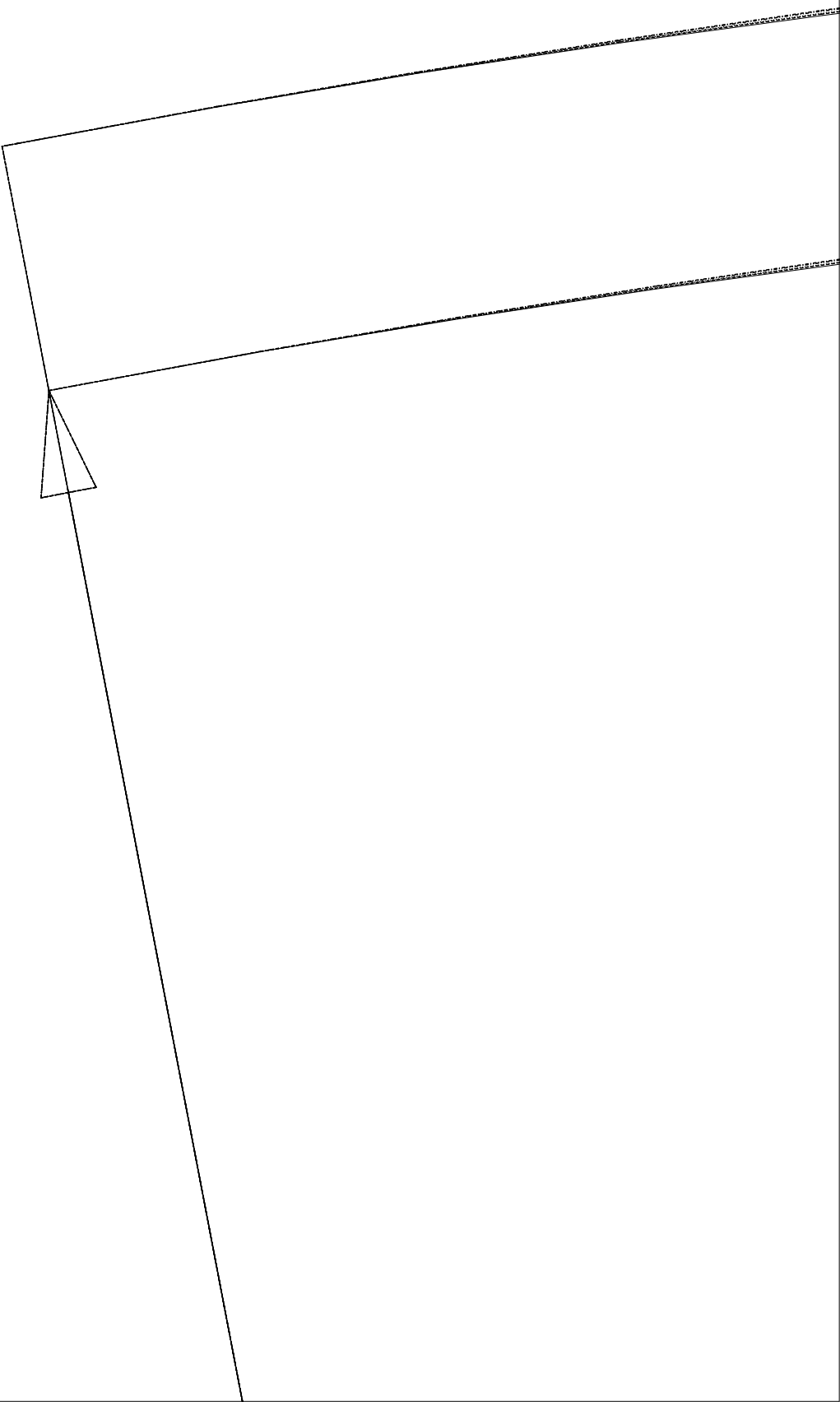
0 0 0 0 0 0



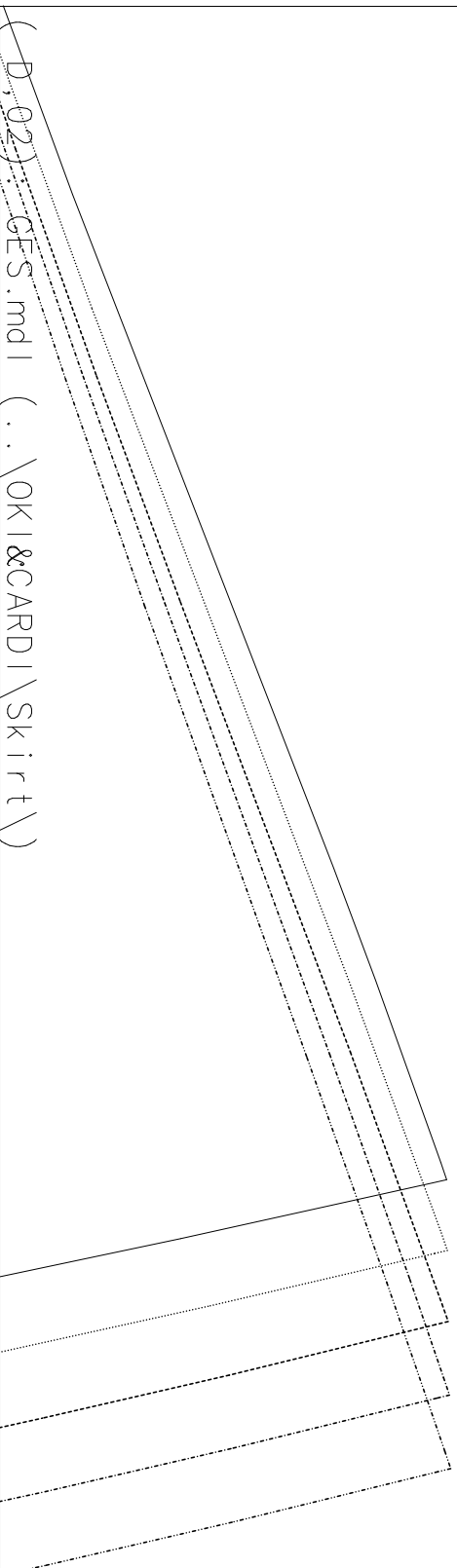
(C,03) : GES.mdl (..\OKI&CARDI\Skirt\)



(D, 01) : GES.mdl (.. \OKI&CARDI\Skirt\)



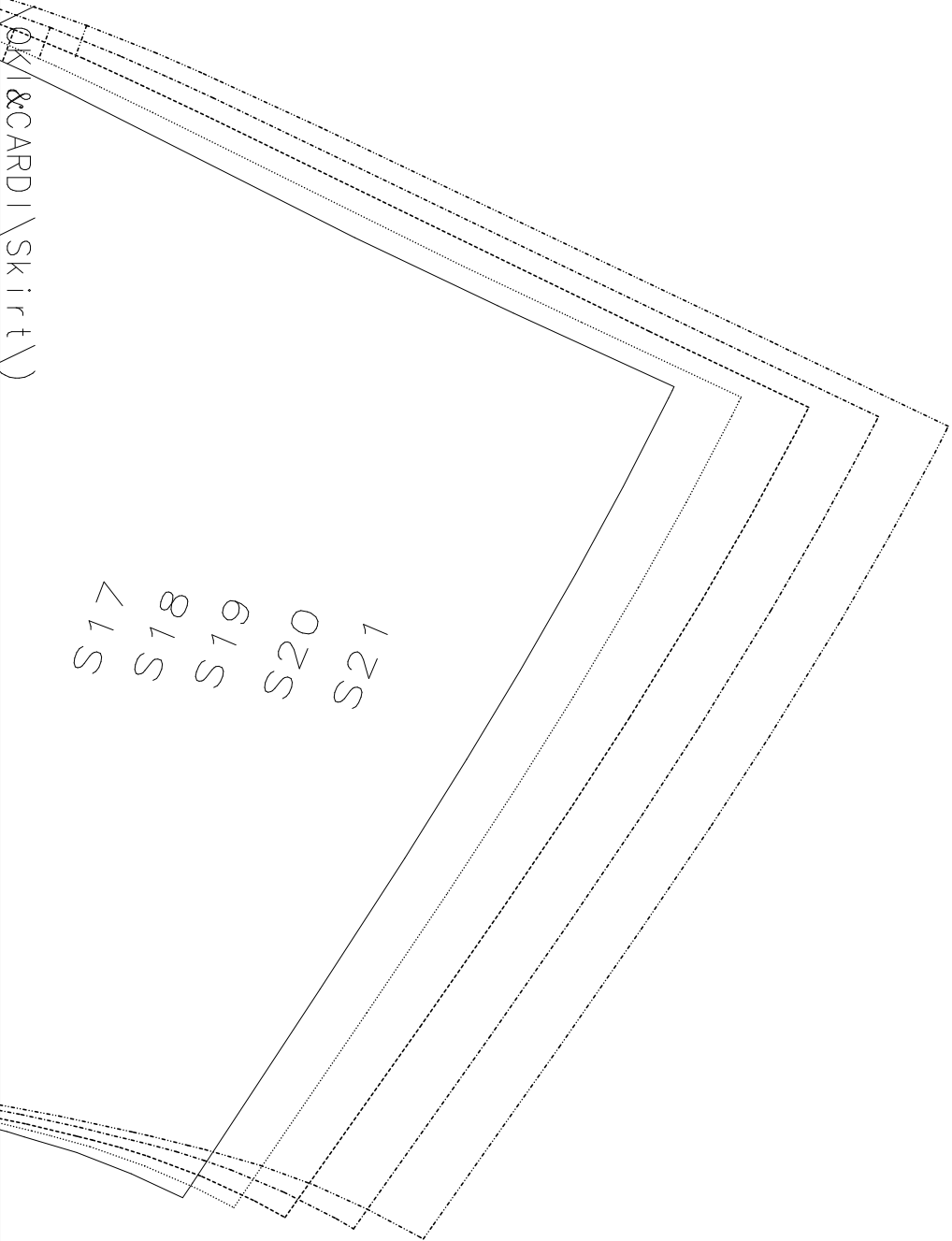
Im Stoffbruch/on fold



(D,02) GFS.mdl (..\OKI&CARDI\Skirt\)

(D,03) : GES.mdl (..\OKI&CARDI\Skirt\)

S17
S18
S19
S20
S21



Saumzugabe/Hemal lowance

S 18
S 17

007 RT Rock/Back skirt
GES
OKI&CARDI\skirt

(E,02): GES.mdl (..\OKI&CARDI\skirt\)

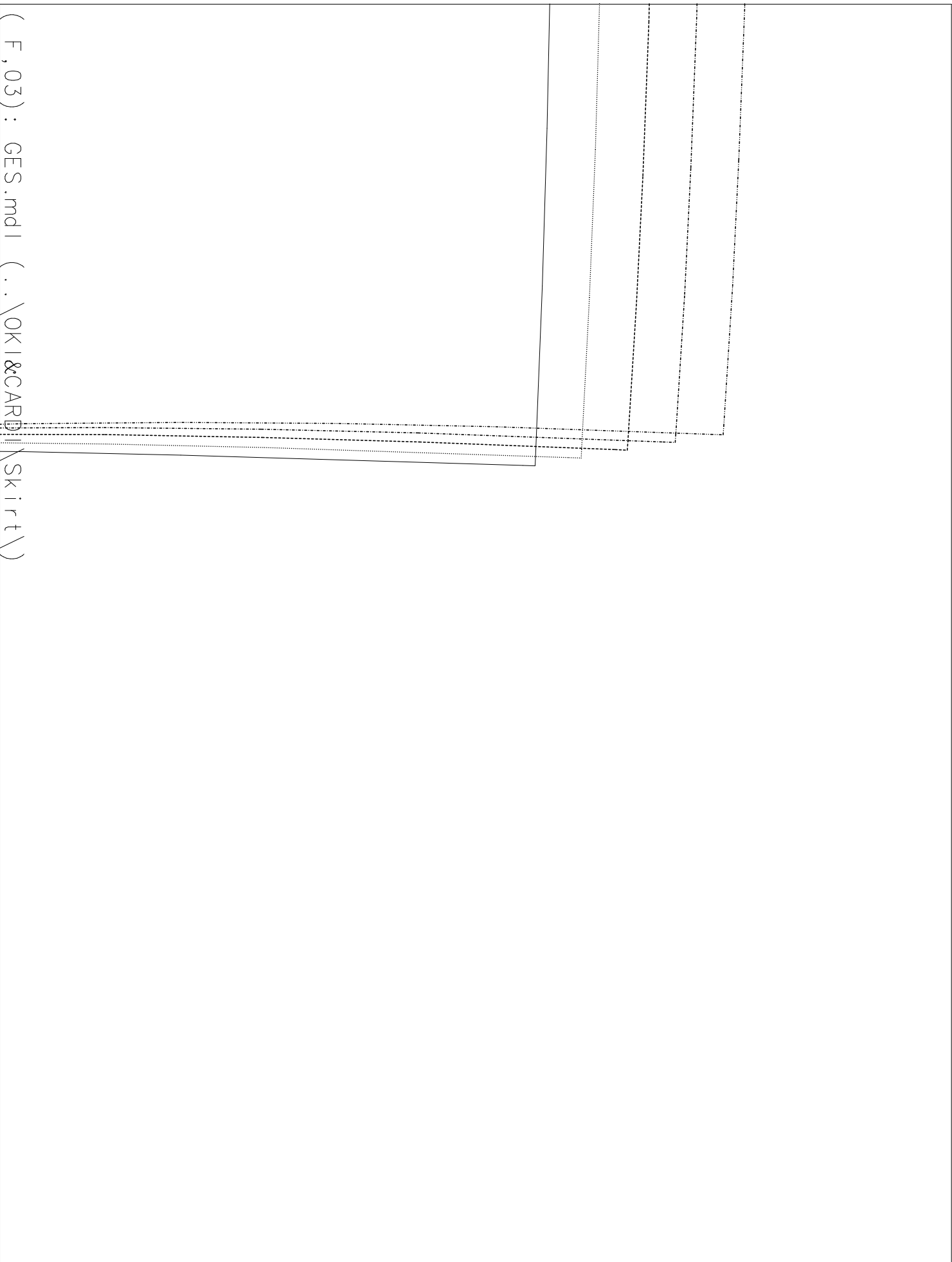
(E, 03) : GES.mdi (..\OKI&CARDI\Skirt\)

(F , Q) : G E S . m d I (. \ O K I & C A R D I \ S k i r t \)

527

S
2
0

(F, 02): GES.mos 1(9. /OKI&CARDI\Skirt\)



(F , 03) : GES.mdl (.. \OKI&CARD\Skirt\)