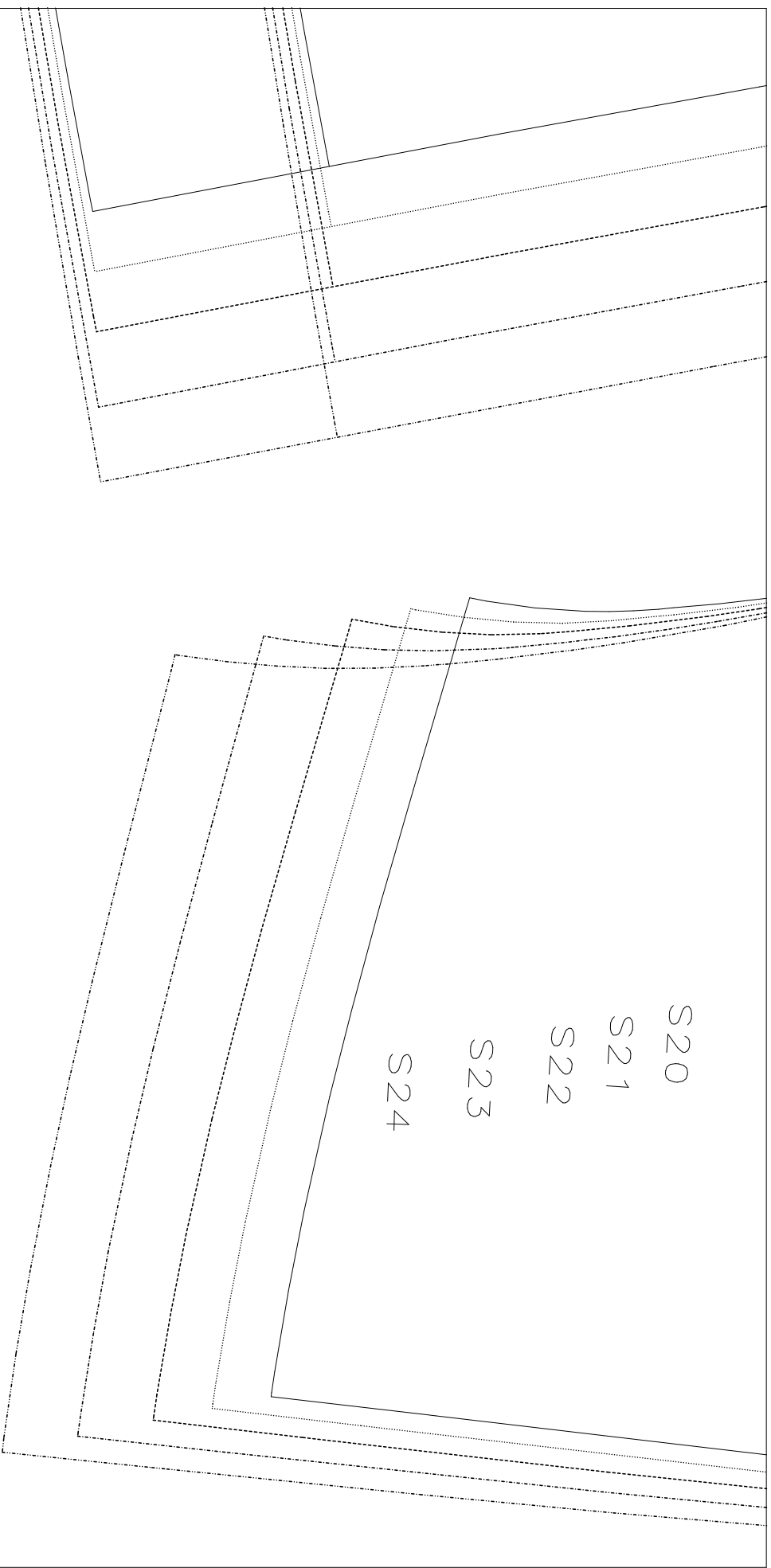


10 cm x 10 cm

Saum

nzugabe/Hemal lowance

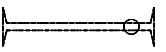
(A,02):GES.mdl (..\OKI&CARD\Skirt\)



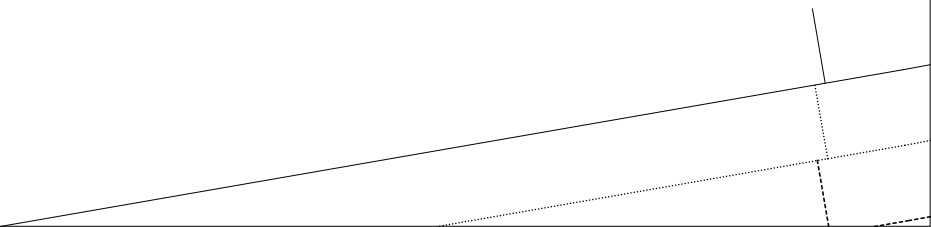
(A, 03) : GES.mdi (..\OKI&CARDI\Skirt\)

k/ Front skirt
skirt

Umbruchlinie/Foldline



(B, 02) : GES.mdl (..\OKI&CARDI\Skirt\)

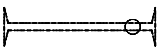


Plot no/henrpfots mi

005
GES
OKI&CARDI\skirt

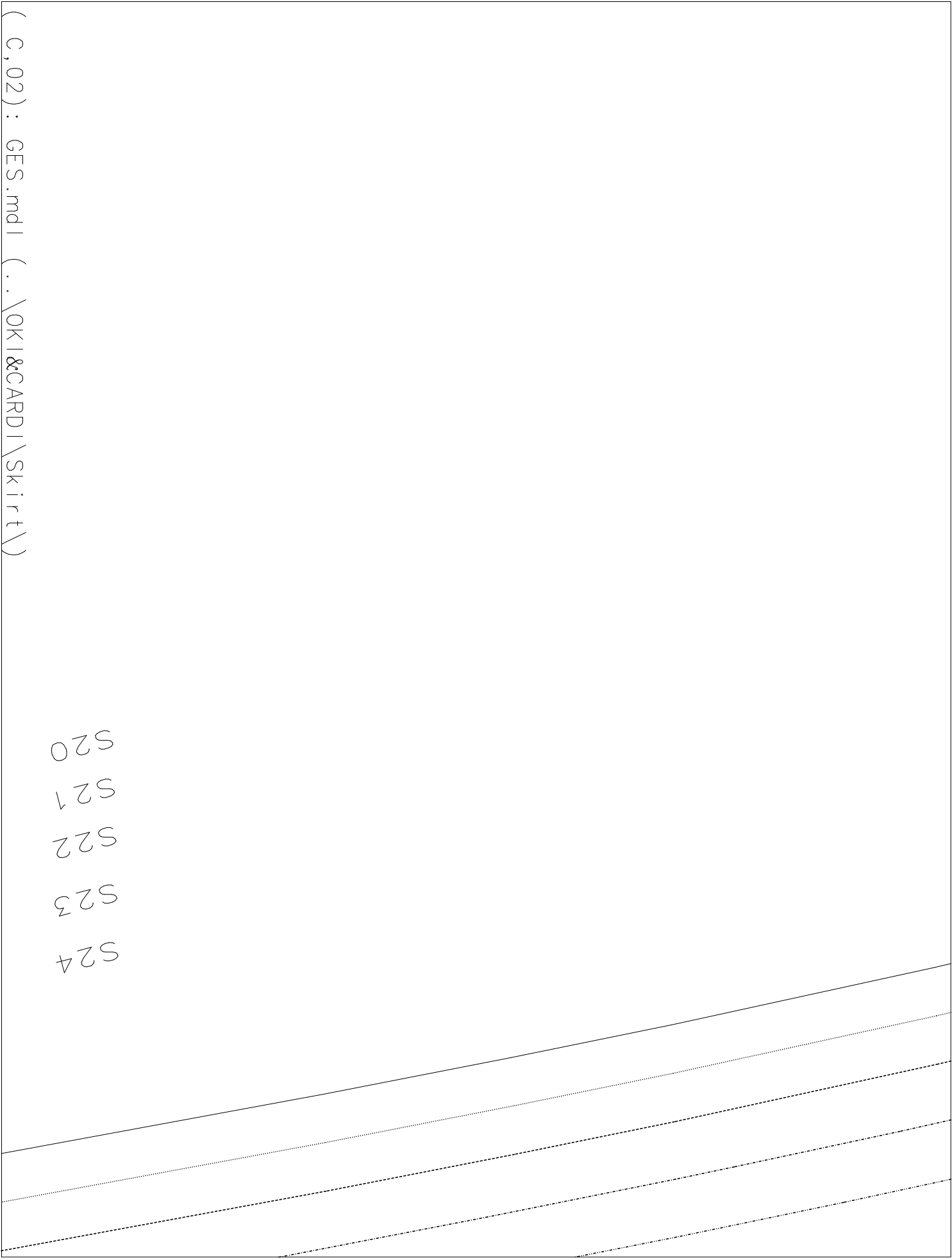
RT Passe/BackBellypart

(B,03):GES.mdi (. \OKI&CARDI\skirt\)



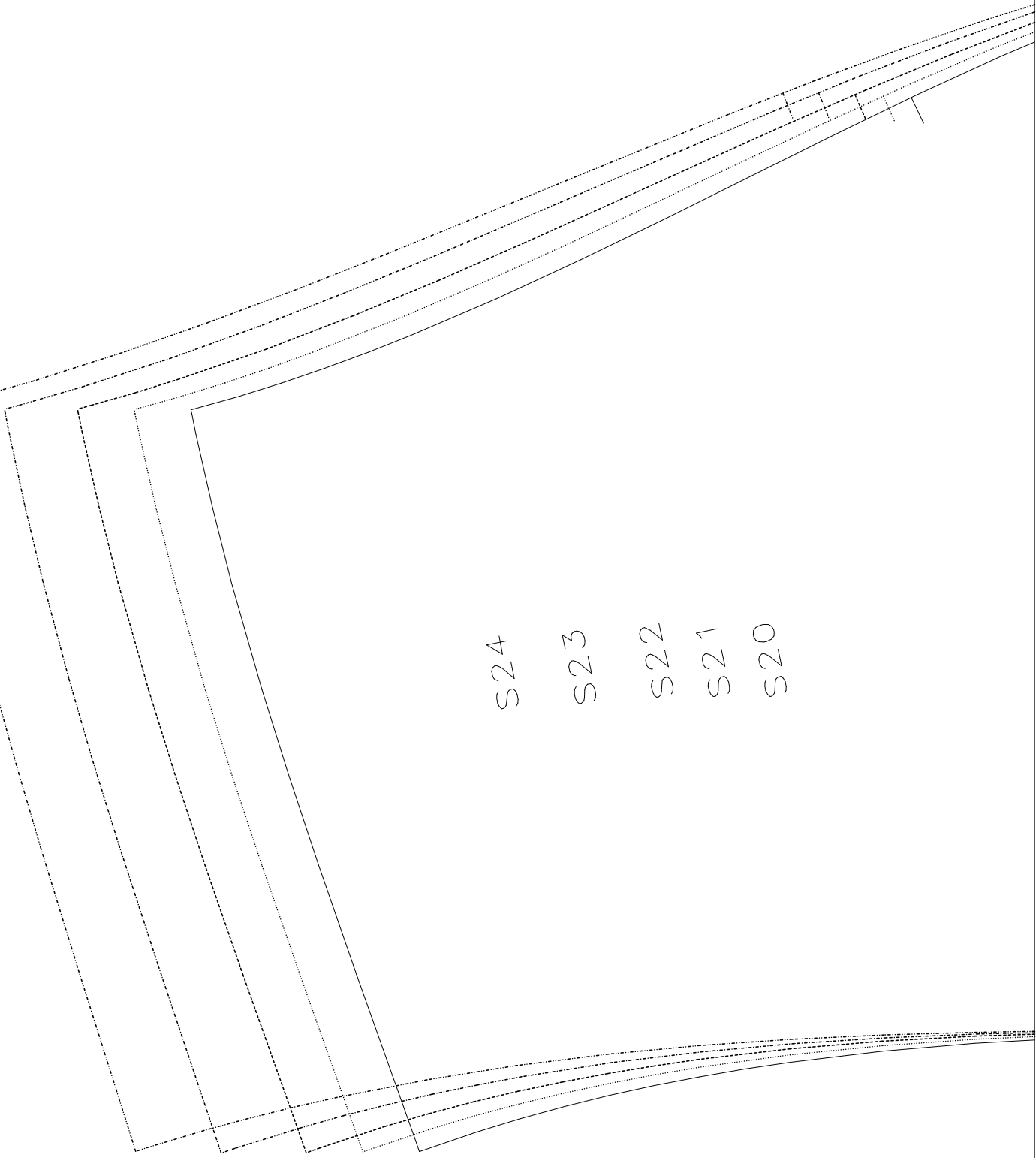
(C, 01) : GES.mdl (.\OKI&CARDI\Skirt\)

006 VT Rock
GES
OKI&CARDI\Skirt\

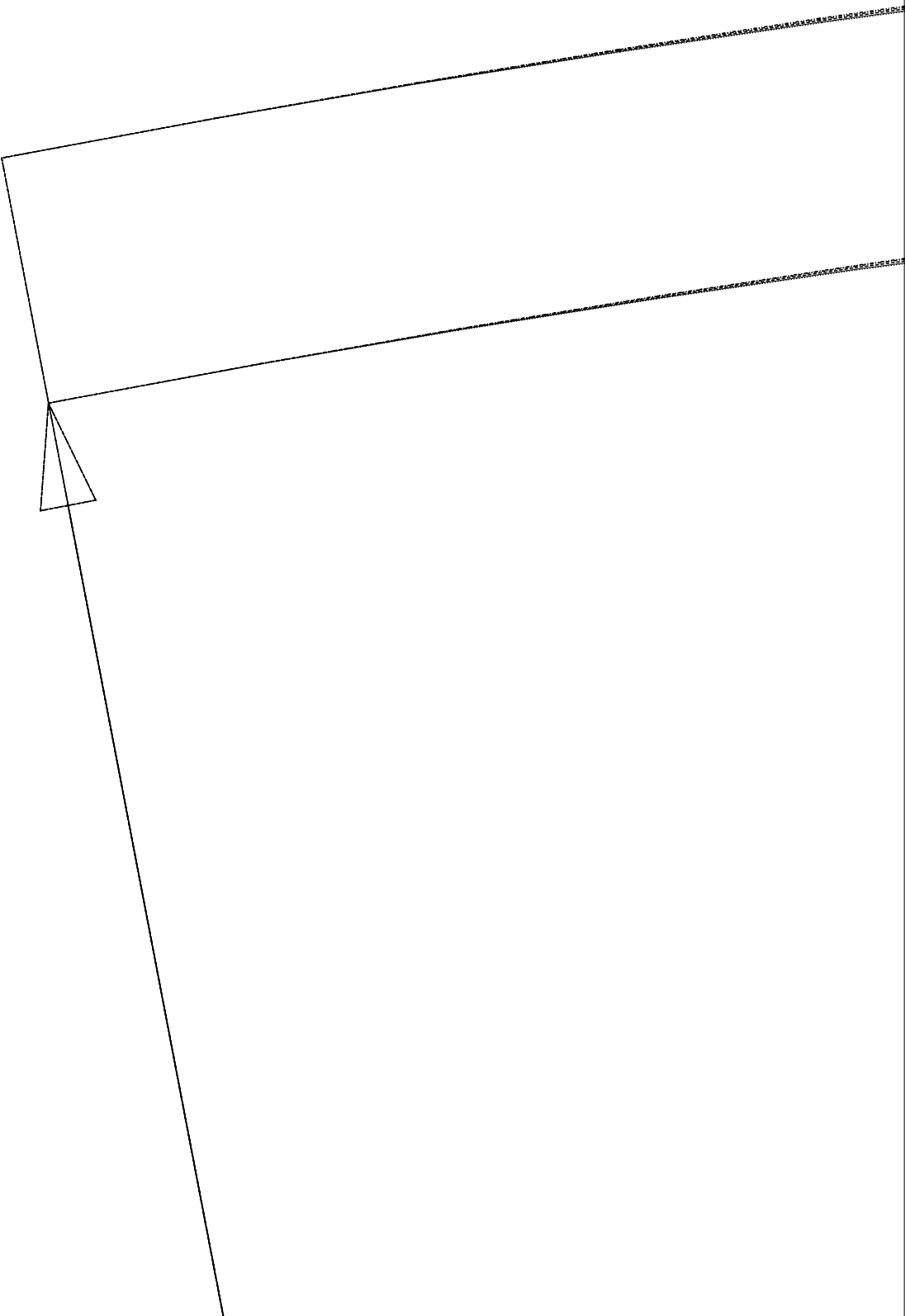
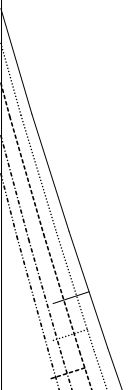


(C,03): GES.mdi (..\OKI&CARD\Skirt\)

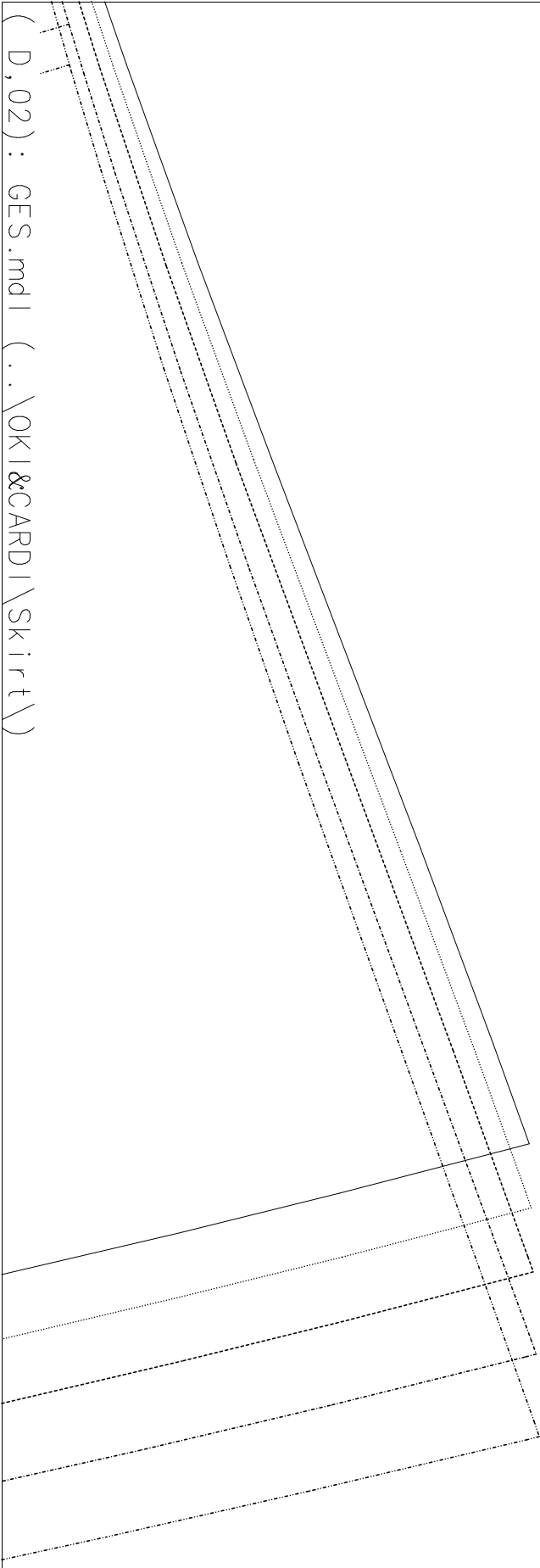
S24
S23
S22
S21
S20



(D, 01) : GES.mdl (..\OKI&CARDI\Skirt\)

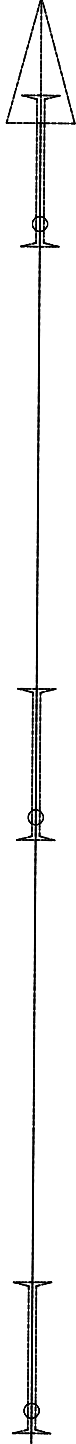


1m Stoffbruch/on fold



(D, 03) : GES.mdi (..\OKI&CARDI\skirt\)

004 OKI&CARDI\Skirt
GES
VT Passe/FrontBellpart



im Stoffbruch/on fold

(E,01): GES.md

(..\OKI&CARD\skirt\)

Saumzugabe/Heml lowance

(E,02):GES.mdl (..\OKI&CARDI\skirt\)

007 RT Rock/Back skirt
GES
OKI&CARDI\skirt

(E, 03) : GES.mdl (.. \OKI&CARDI\Skirt\)



(F, 01) : QES.mdl (..\OKI&CARDI\Skirt\)

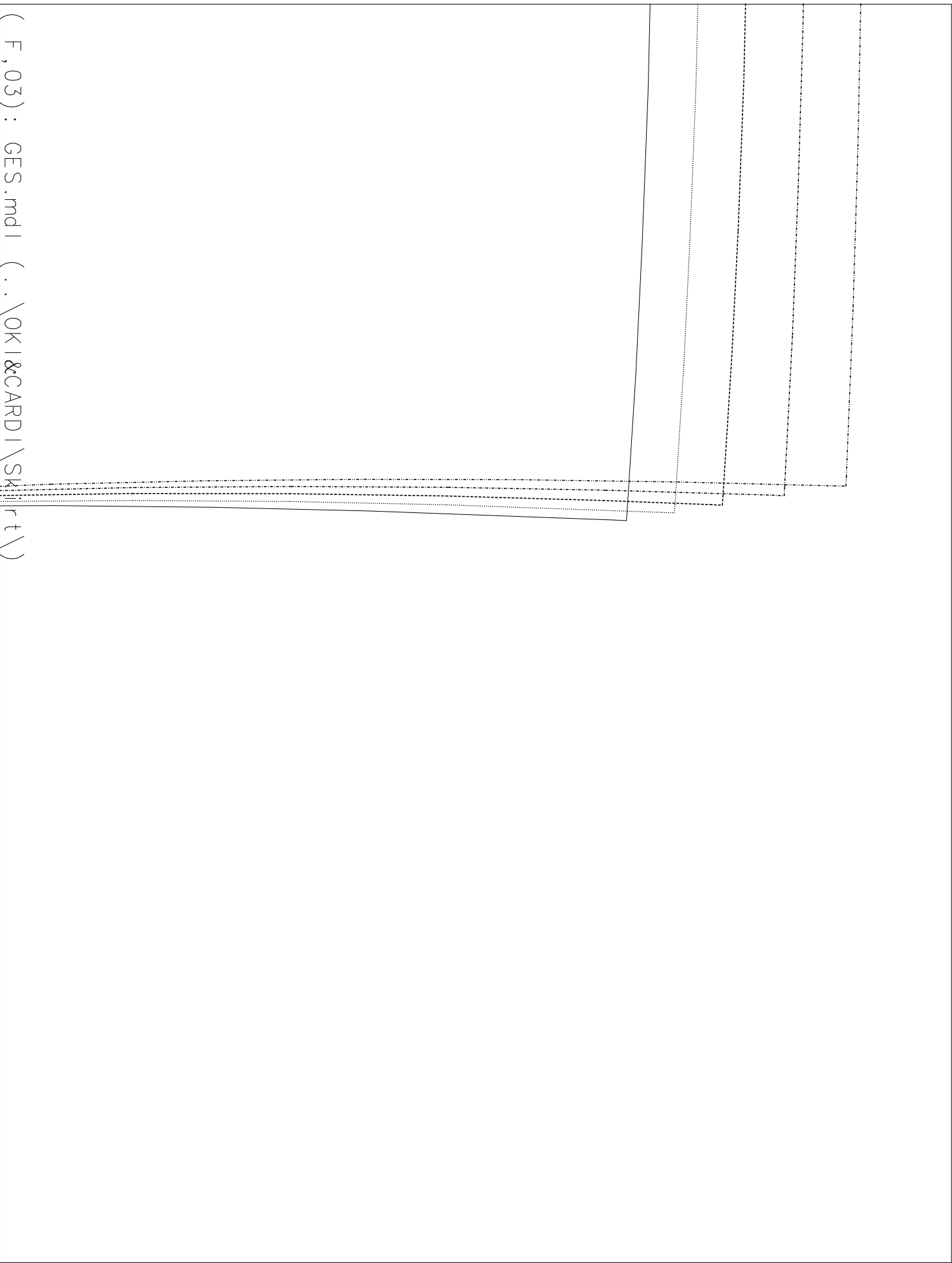
524

526

522

527

(F, 02): GES.mdl (~~.\$QKD&CARD1\Skirt\~~)



(F, 03) : GES.mdl (..\OKI&CARDI\SKrt\)