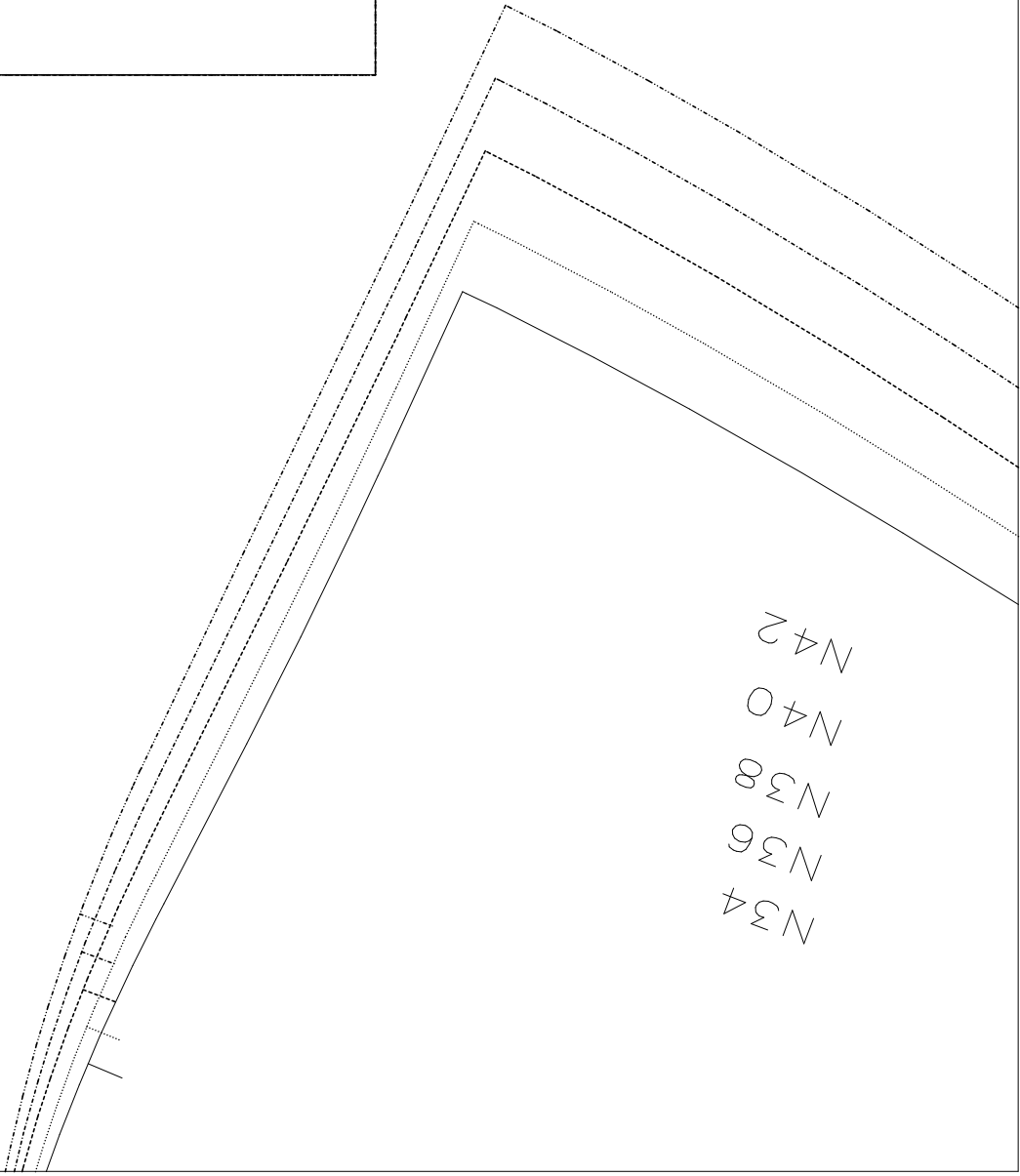
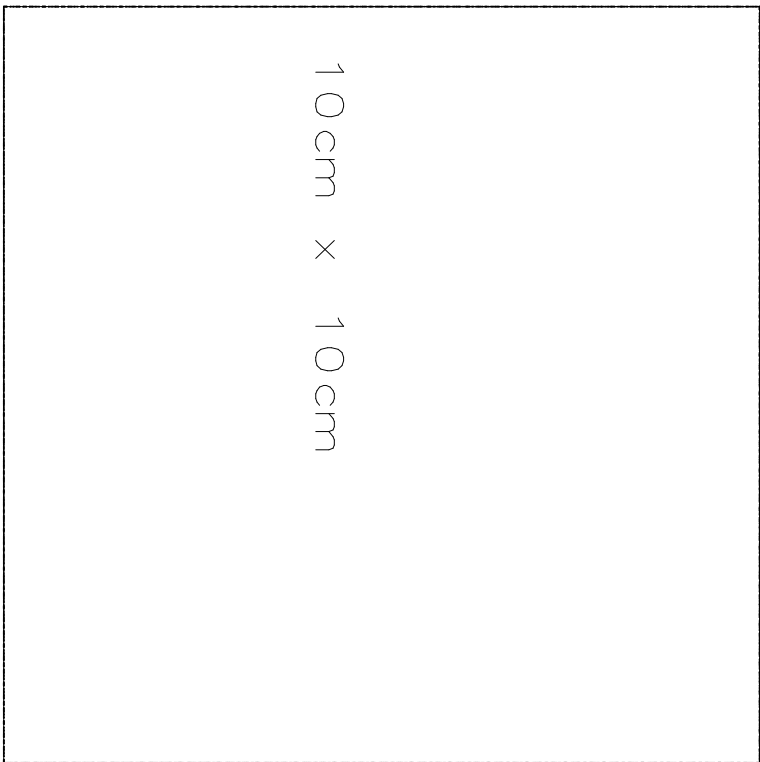


N34
N36
N38
N40
N42

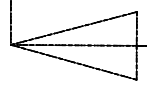


10cm x 10cm

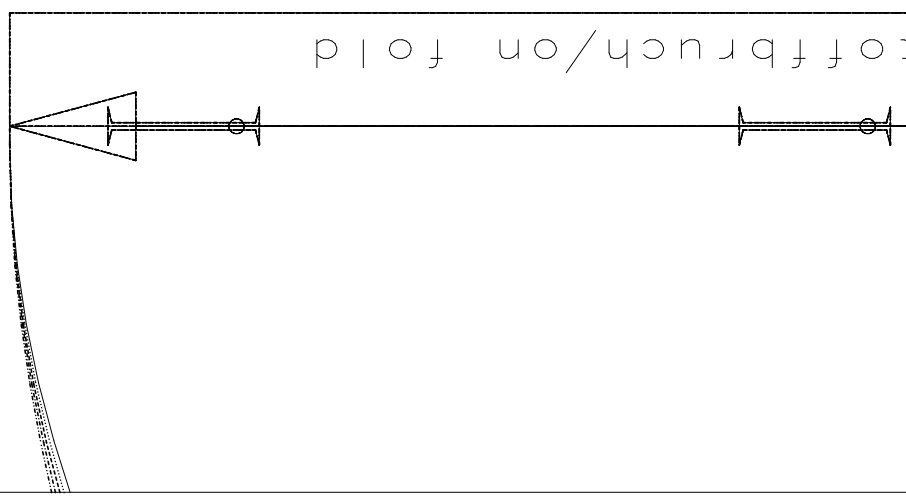


5 RT Passe/BackBell ypart
S I&CARDI\Skirt

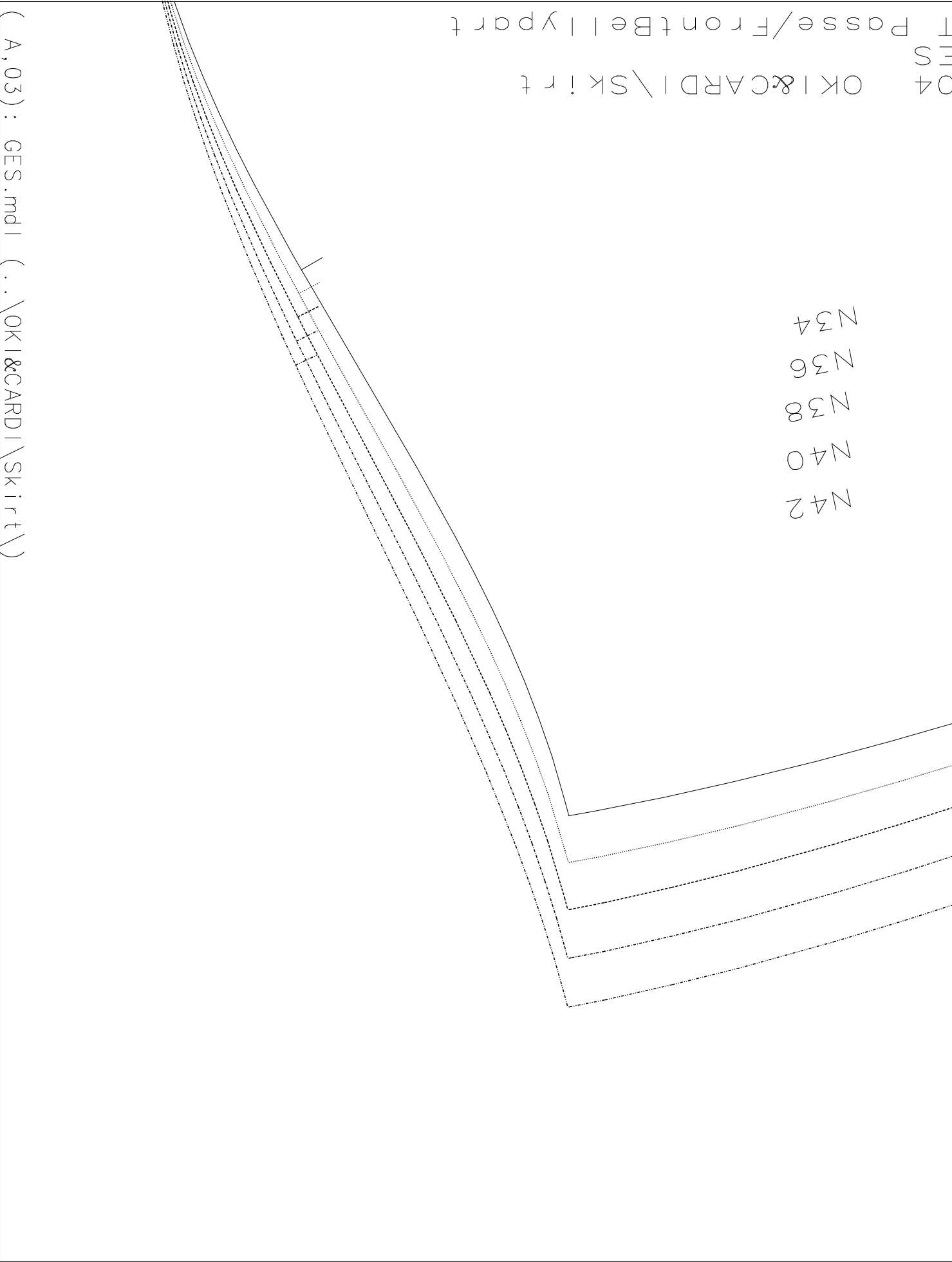
im Stoffbruch/on fold



im Stoffbruch/on fold

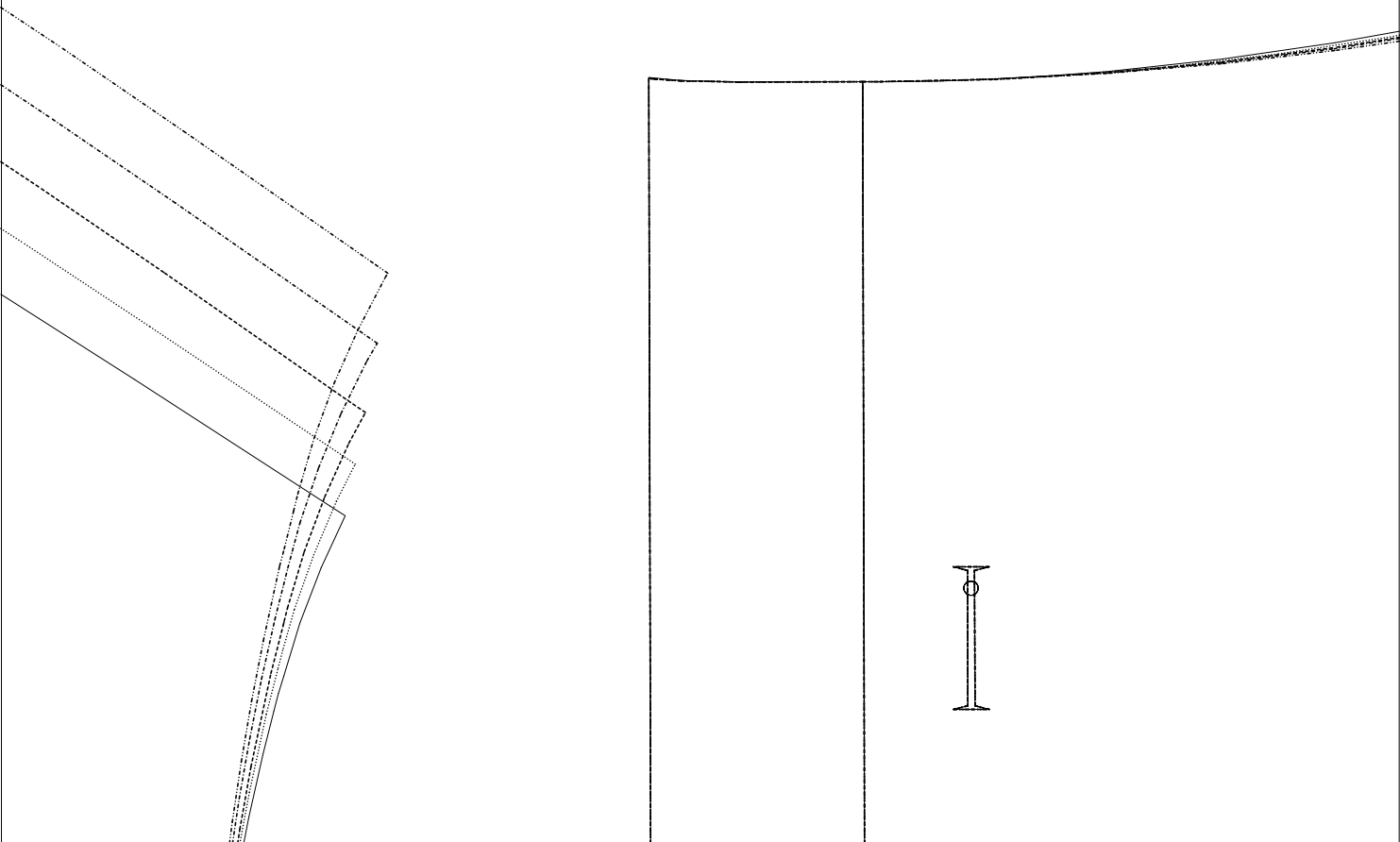


(A, 02) : GES.mdl (..\OKI&CARDI\Skirt\)



(A,03): GES.mdl (..\OKI&CARDI\Skirt\)

(B, 01) : GES.mdi (..\OKI&CARDI\Skirt\)

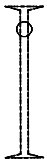




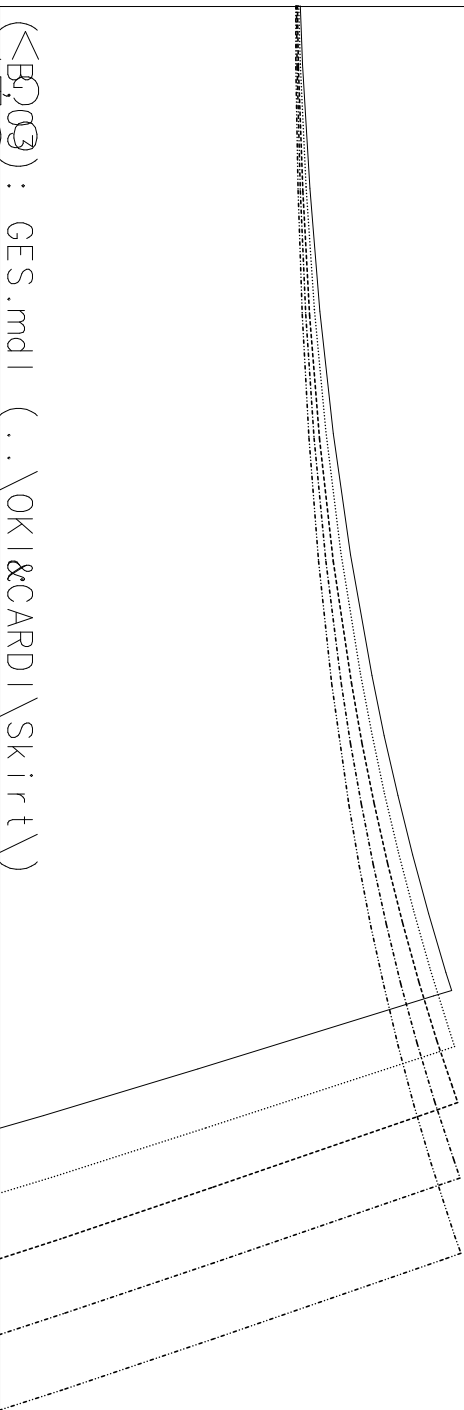
Umbrellinie/Foldline

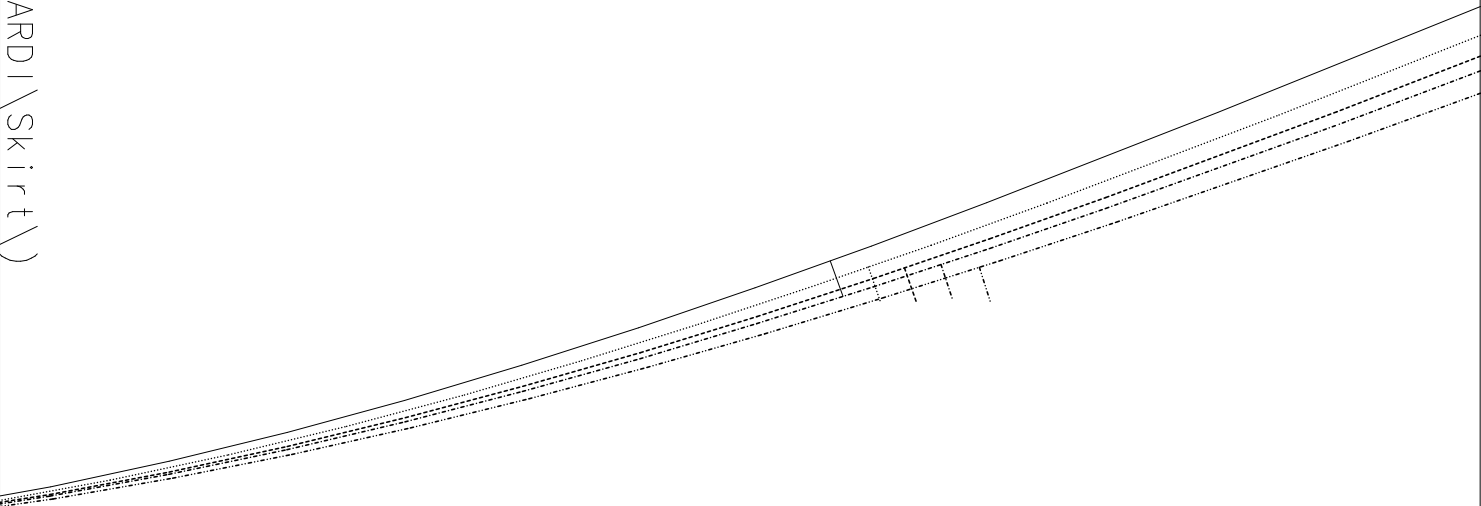


(B, 02) : ~~OK~~ STINDI (.. \OKI&CARDI\Skirt\)



(<B0,03) : GES.mdl (..\OKI&CARD\Skirt\)





(C, 01) : GES.mdi (.. \OKI&CARDI\Skirt\)

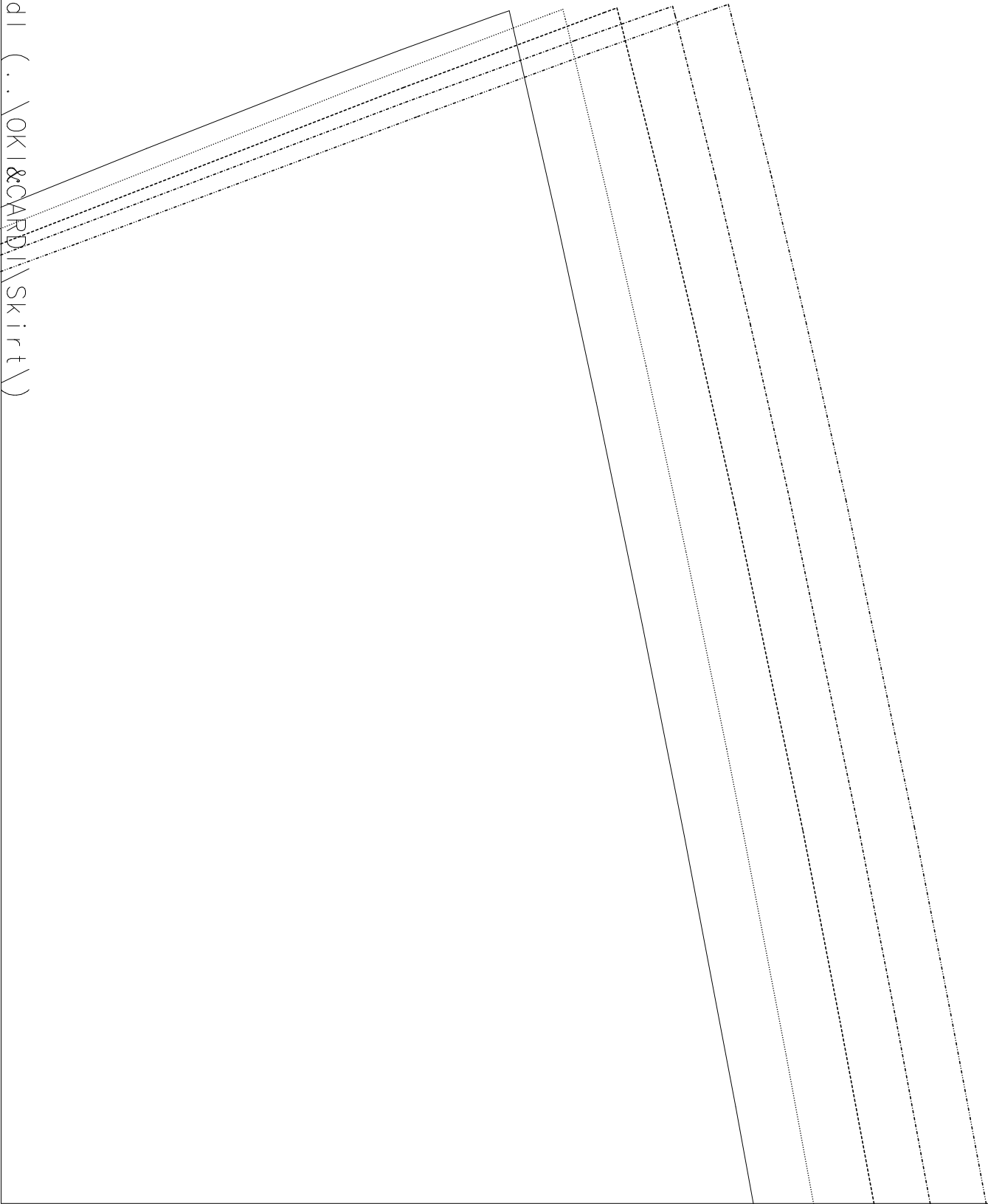
006 VT Rock/Front skirt
GES
OKI&CARDI\Skirt

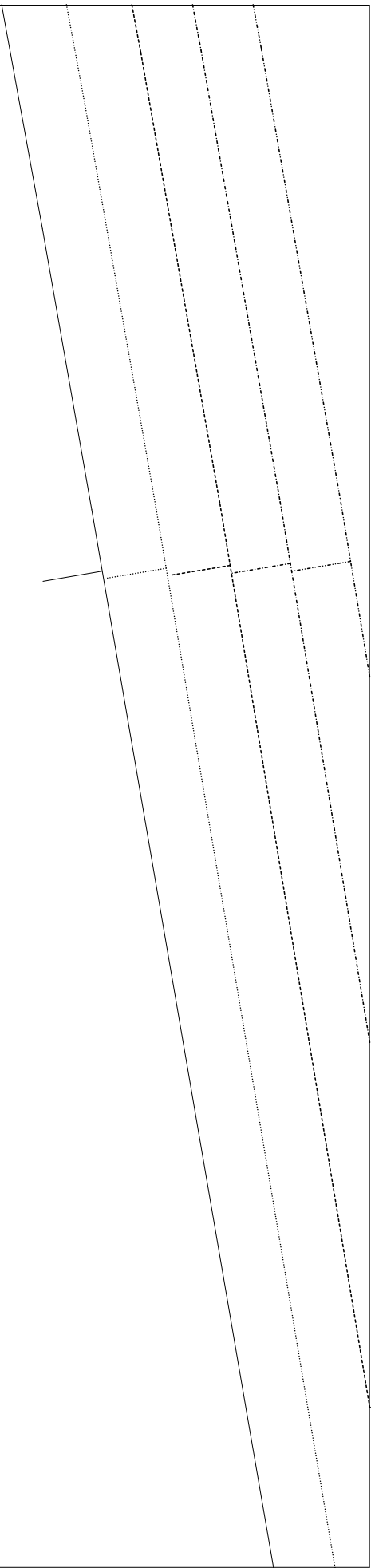
(C,02):GES.mdl (..\OKI&CARDI\Skirt\)

(C, 03) : GES.mdi (.. \OKI&CARDI\Skirt\)

Saumzugabe/Hemallo

(D,01): GES.mdl (..\OKI&CARD\Skirt\)



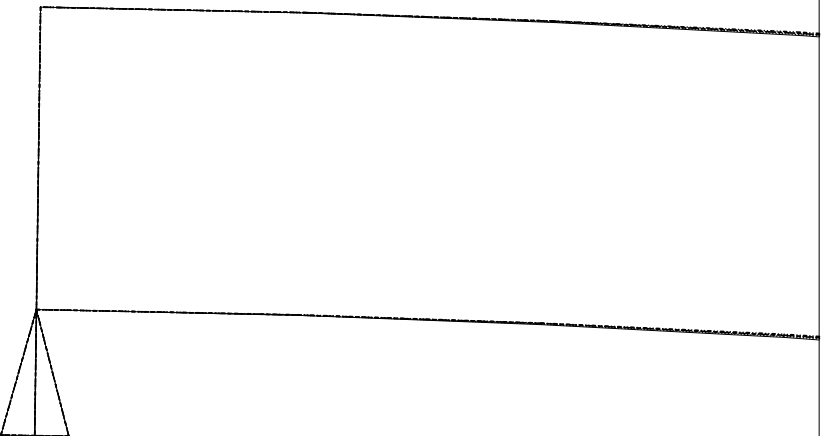


N42
N40
N38
N36
N34

(D, 02) : GES.mdl (..\OKI&CARDI\Skirt\)

(D, 03) : GES.mdl (..\OKI&CARDI\Skirt\)

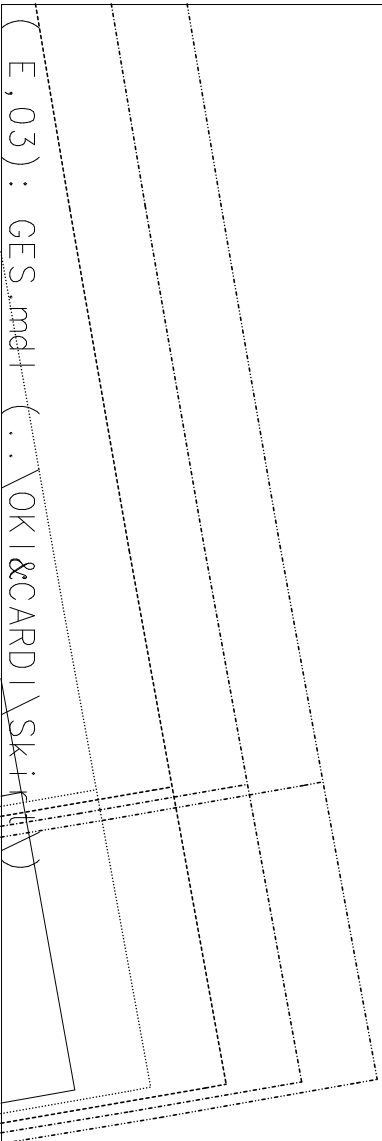
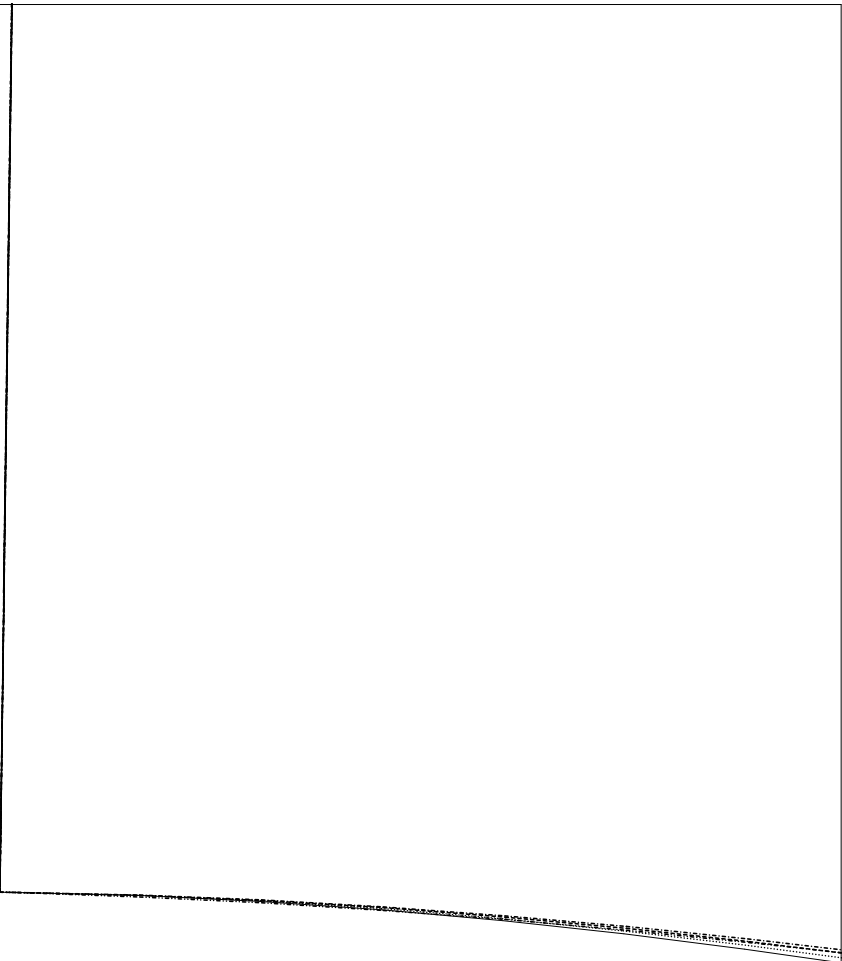
wance



(E, 01) : GES.mdl (.. \OKI&CARDI\Skirt\)

Im Stoffbruch/ on fold

(E, 02) : GES.mdi (..\OKI&CARDI\Skirt\)



(E, 03) : GES.mdi (... \OKI&CARDI\Skirt\)

Saunzugabe/Hema | lowance

(F, 01) : GES.mdi (..\OK &CARDI\skirt\)

N42

N40

N38

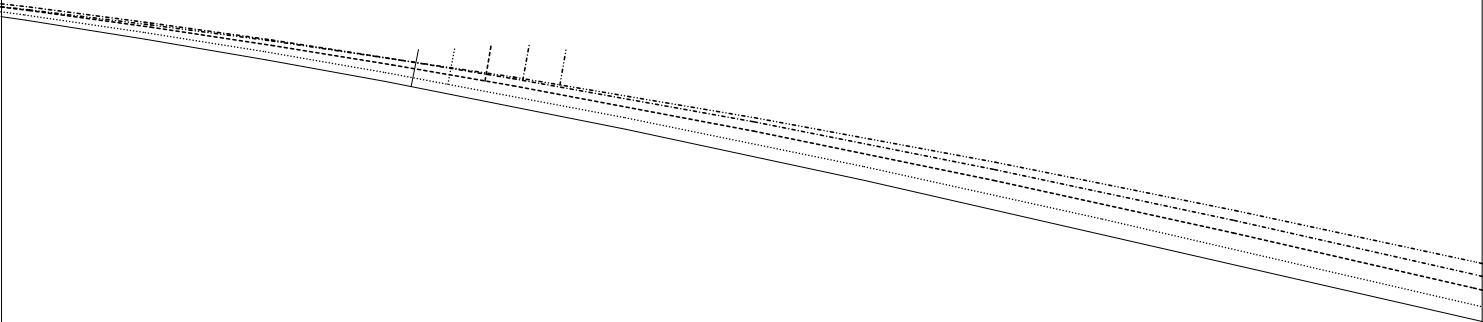
N36

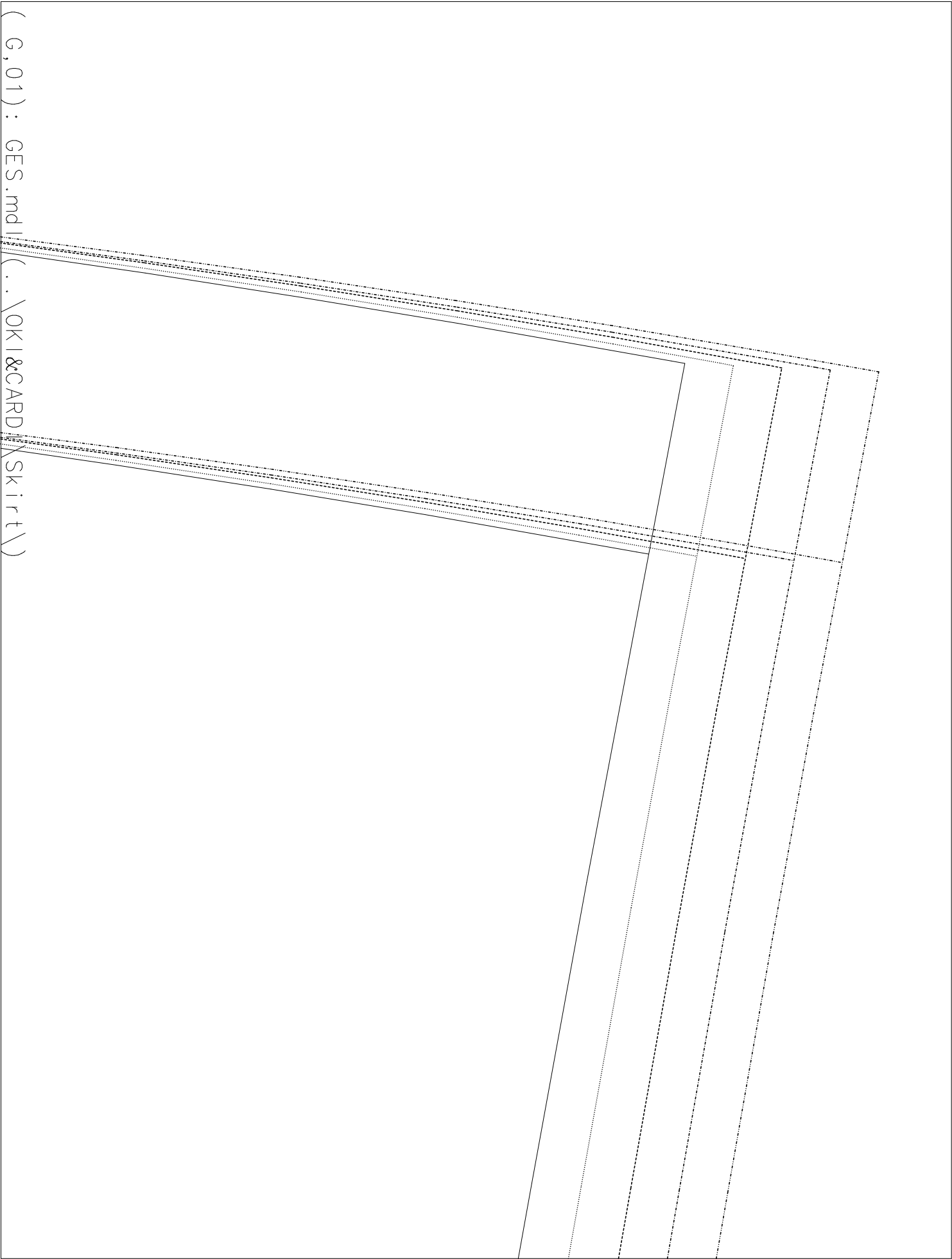
N34

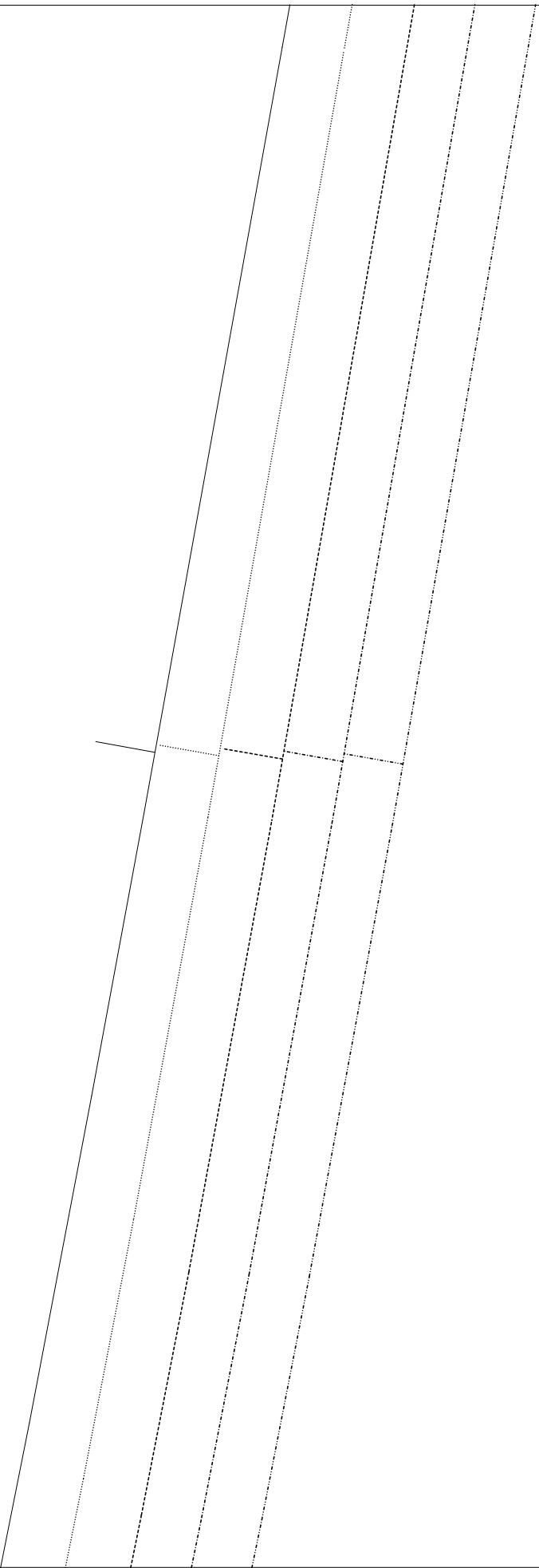
007 RT Rock/Back skirt
GES
OKI&CARDI\Skirt

(F,02): GES.mdl (..\OKI&CARDI\Skirt\)

(F , 03) : G E S . m d I (. . \ O K I & C A R D I \ S k i r t \)







(G, 02) : GES.mdl (..\OKI&CARDI\Skirt\)

(G, 03) : GES.mdl (..\OKI&CARDI\Skirt\)

