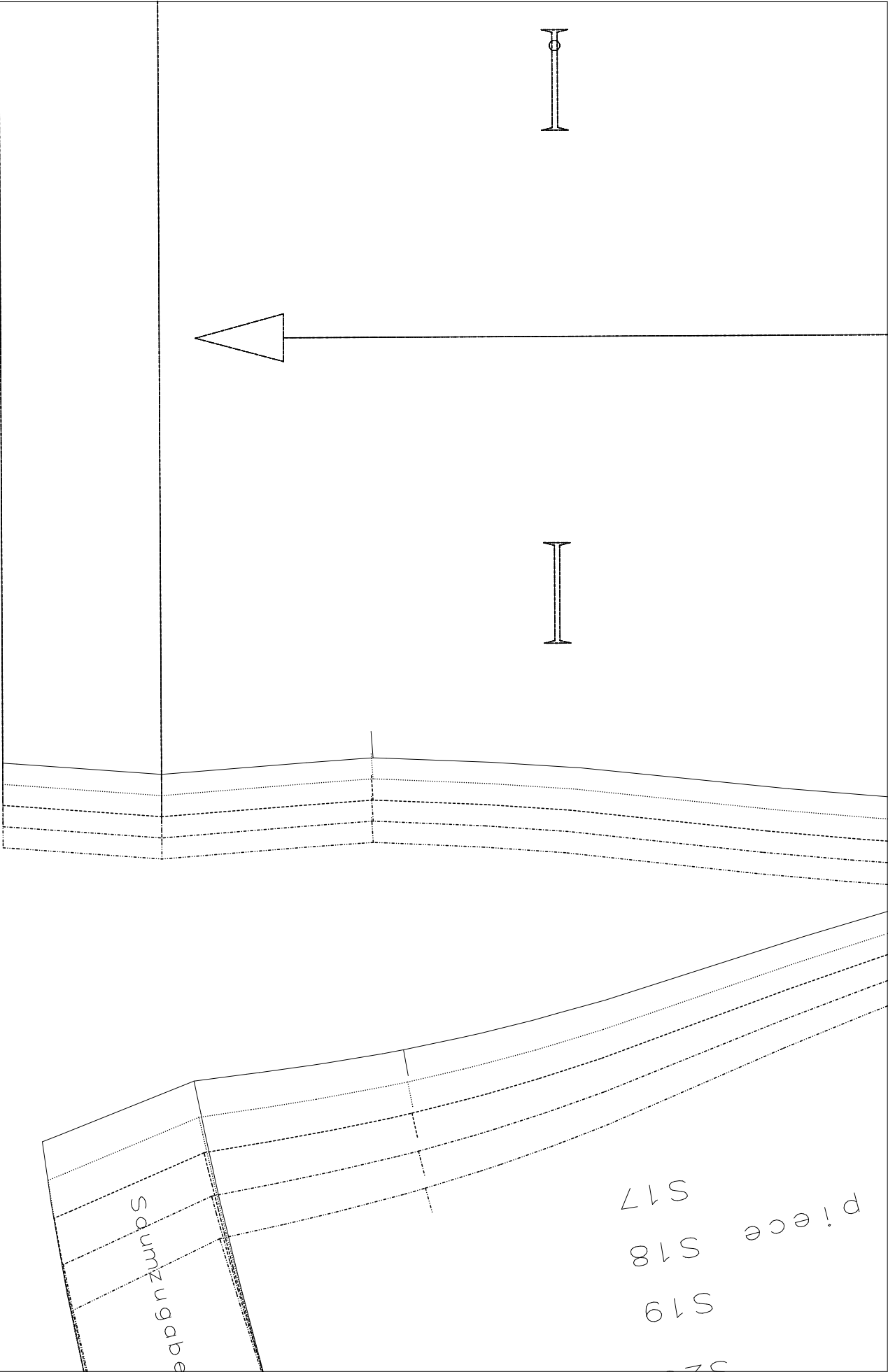


t facing

Umbruchlinie/Foldline

10 cm x 10 cm

(A,02) : Lora.mdl (..\OKI&CARDI\Blusen\)



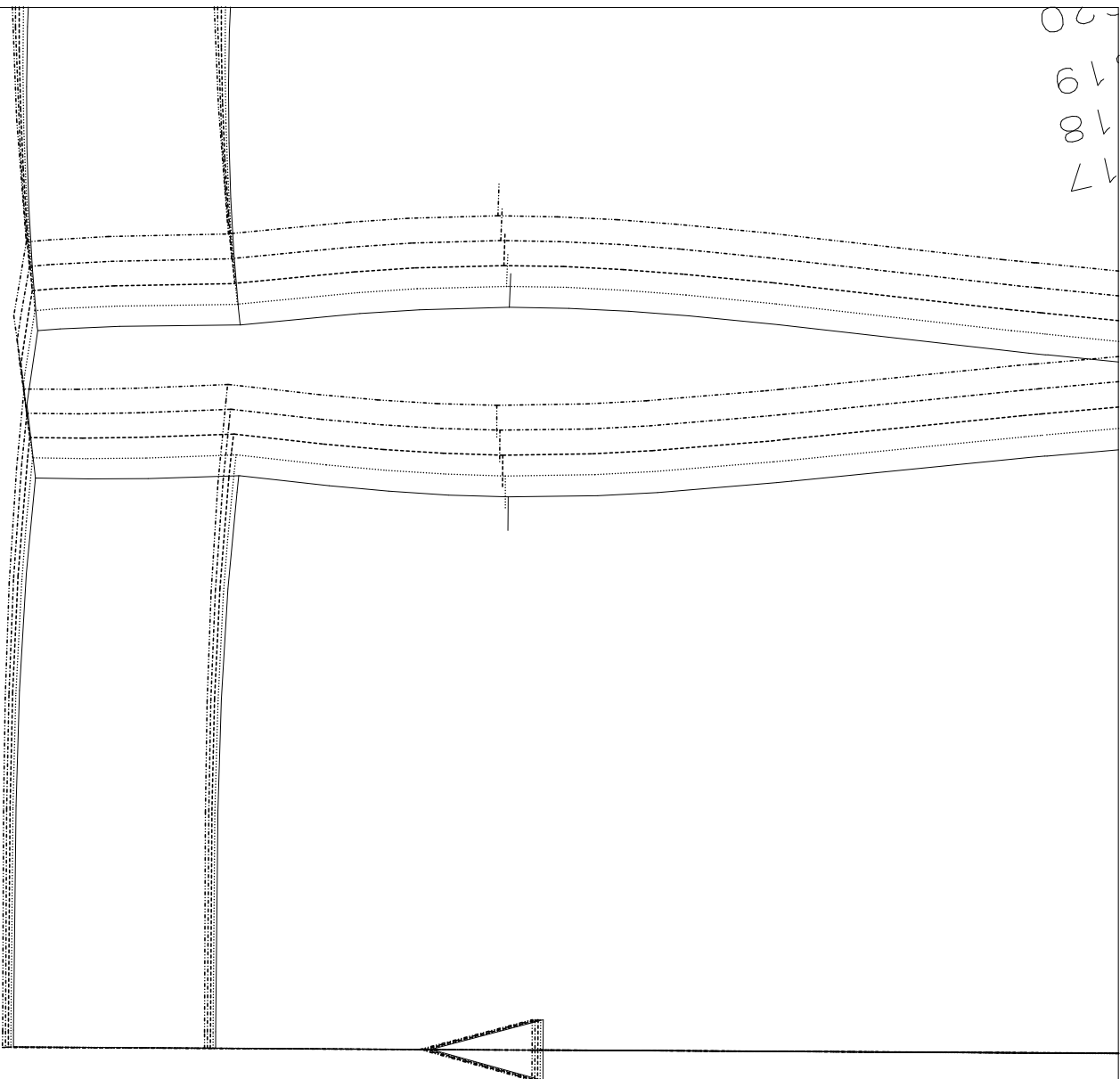
S21
S20

/Hemdl lowance

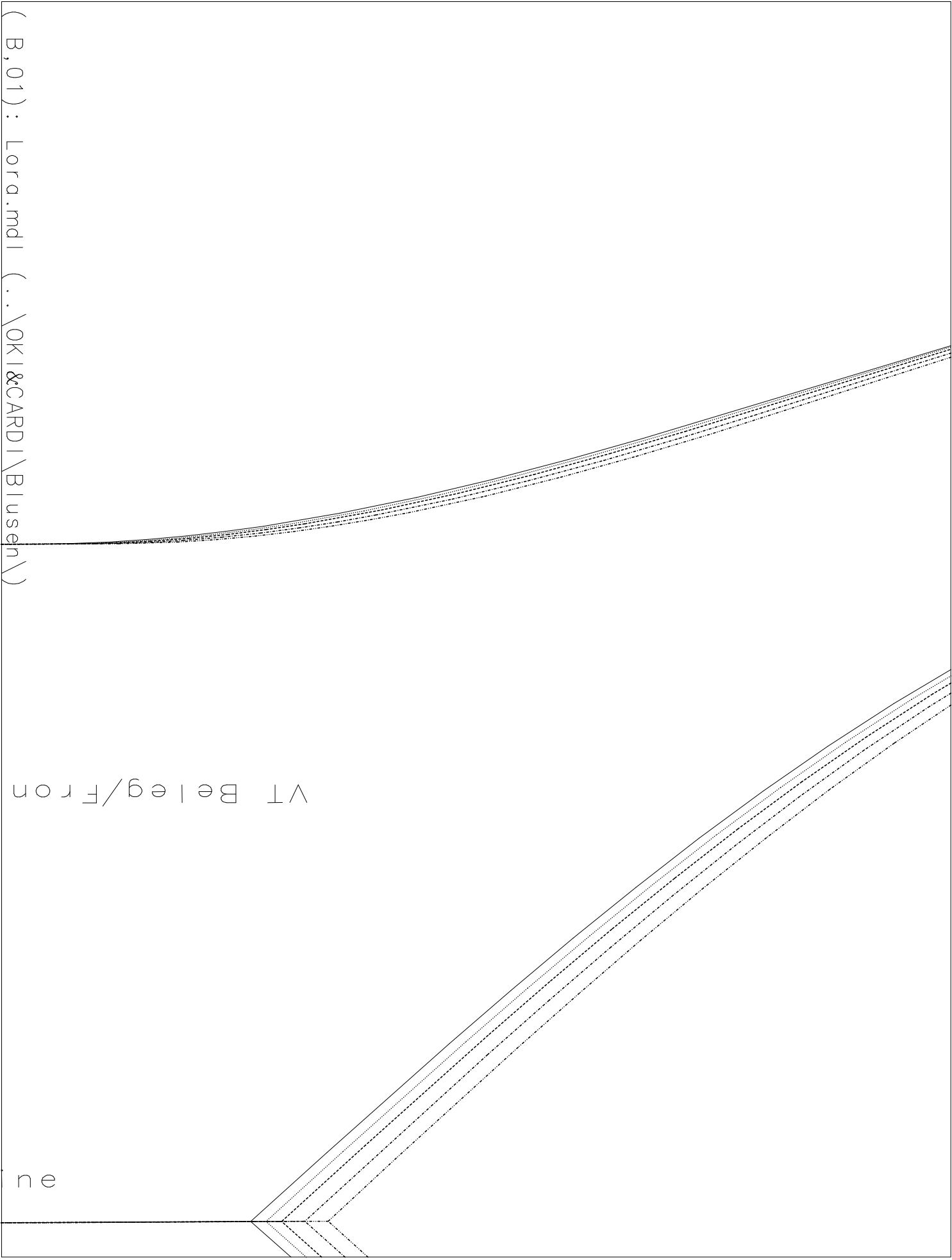
S21
S20

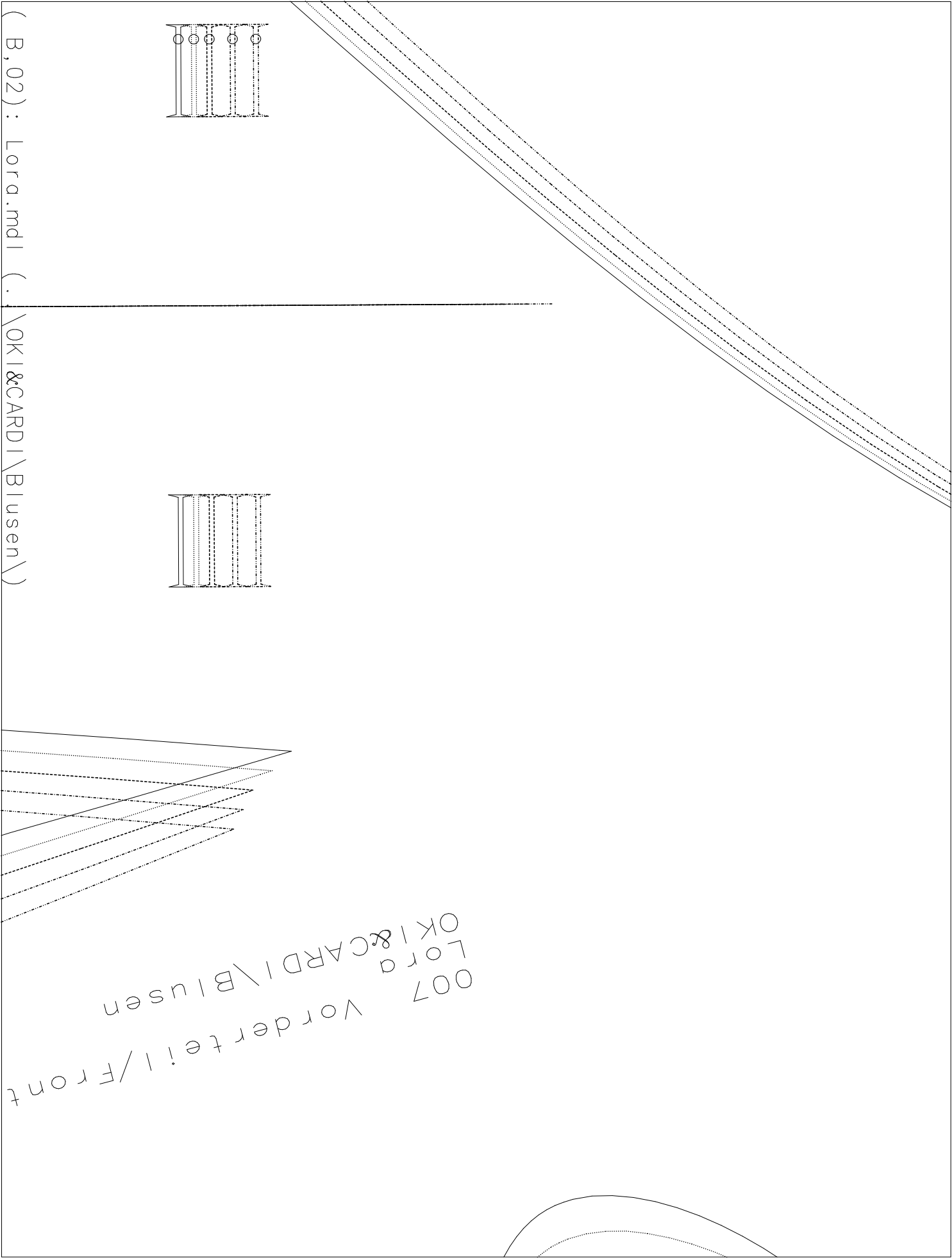
(A,03): Lora.mdl (..\OKI&CARDI\Blusen\)

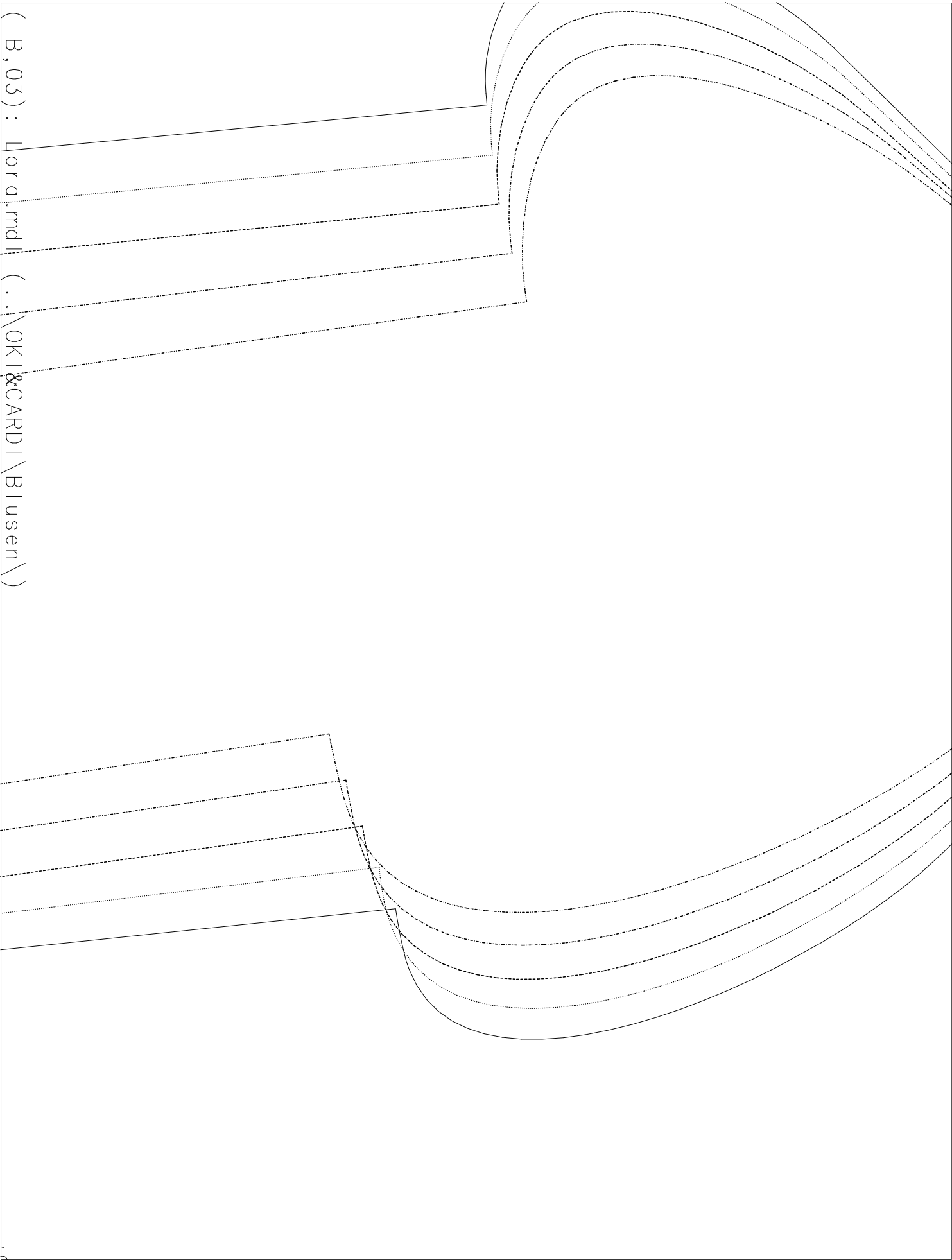
17
18
19
20



(A,04) : Lora.mdl (..\OKI&CARDI\Blusen\)





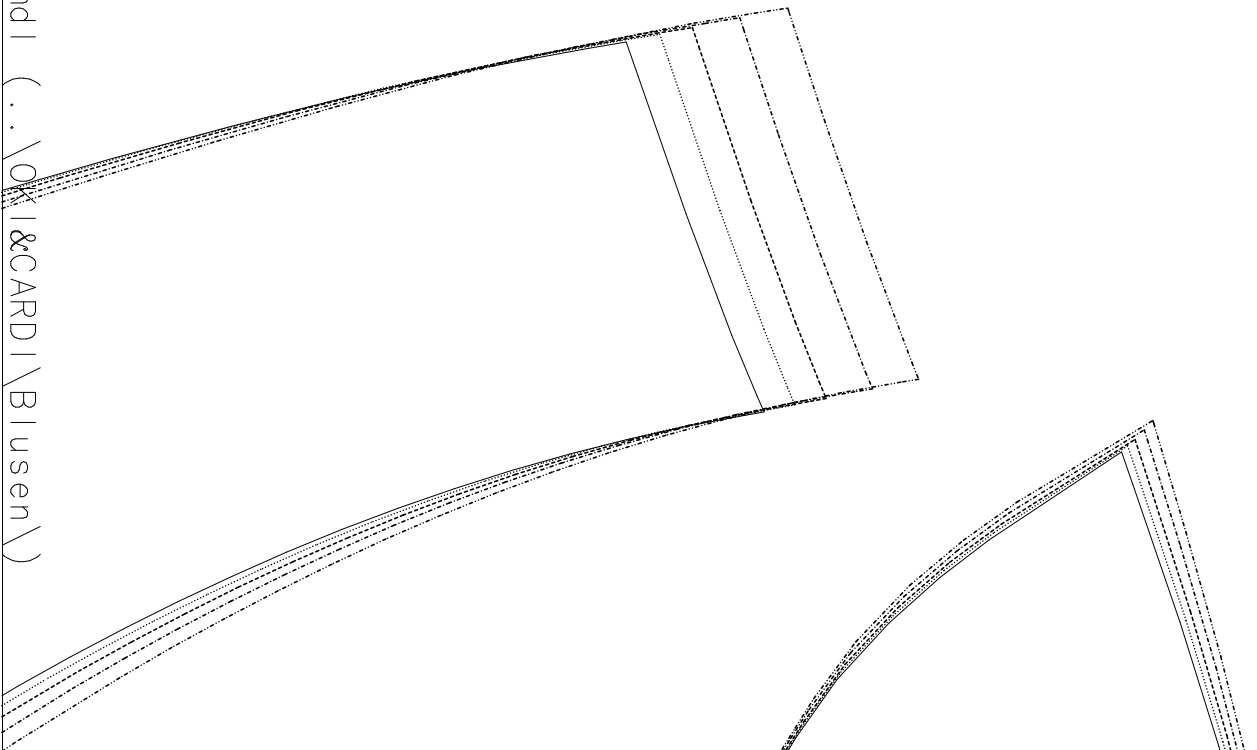


008 Rückenteil/Back piece
OKI&CARDI\Blusen
Lord

Im Stoffbruch/on fold

((B, 04 Y): Lord.md ((
OKI&CARDI\Blusen\)

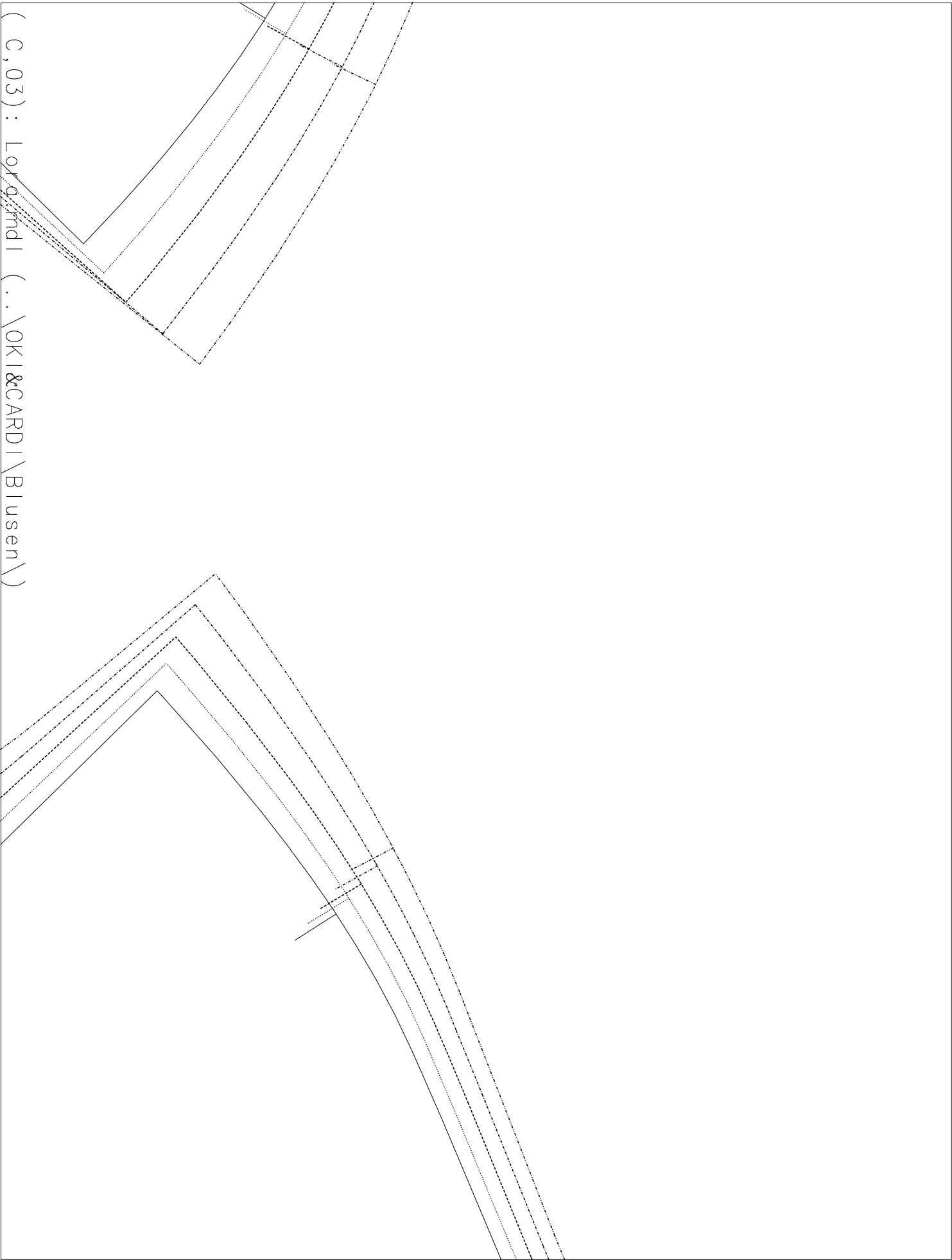
009 RT Halsbeleg
Lora
OKI&CARDI\Blusen



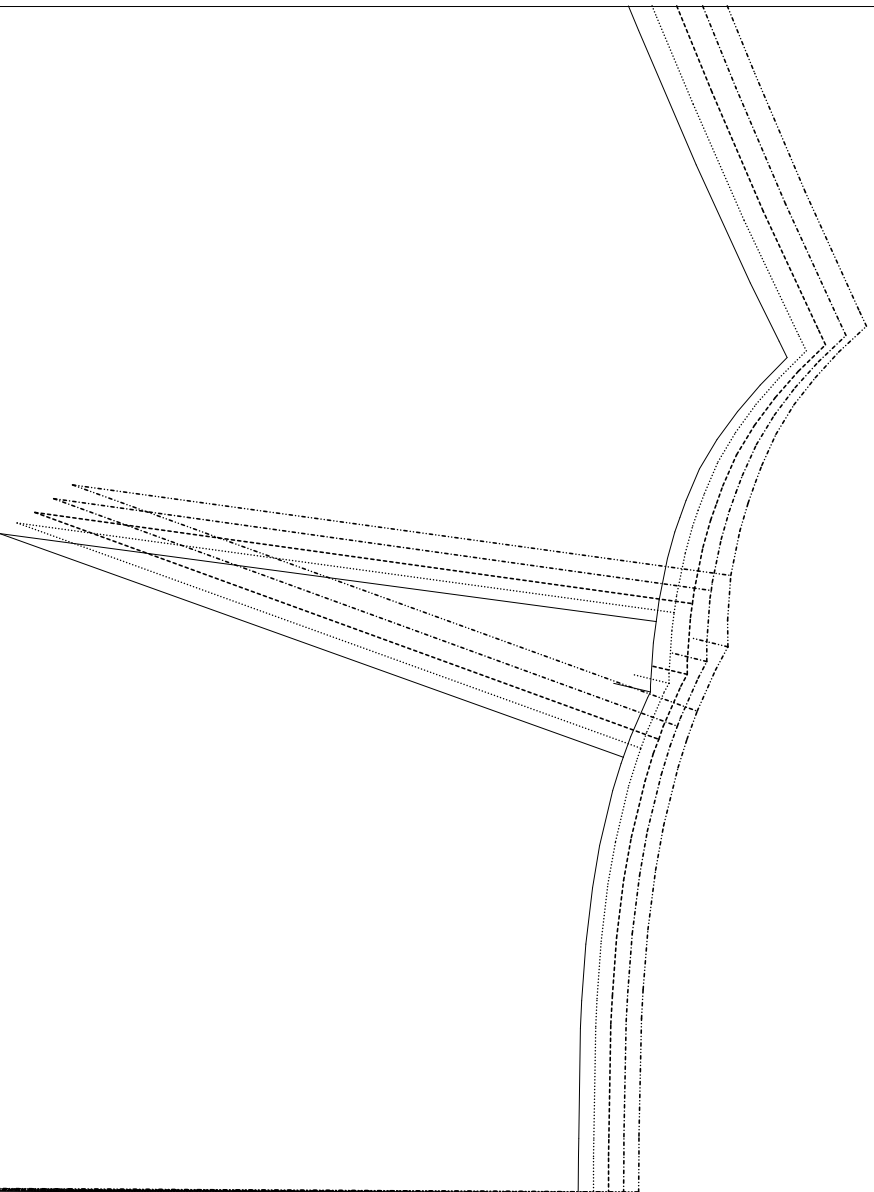
(C,01): Lora.mdl (..\OKI&CARDI\Blusen\)

00000
~~00000~~
~~00000~~

(C, 02) : Lora.mdl (..\OKI&CARDI\Bjussen\)



(C,03) : Lord.mdl (..\OKI&CARDI\Blusen\)



(C,04): Lora.mdl (..\OKI&CARDI\Blusen\)