

bu!

10cm x 10cm

Umbruchlinie/Foldline



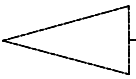
rece

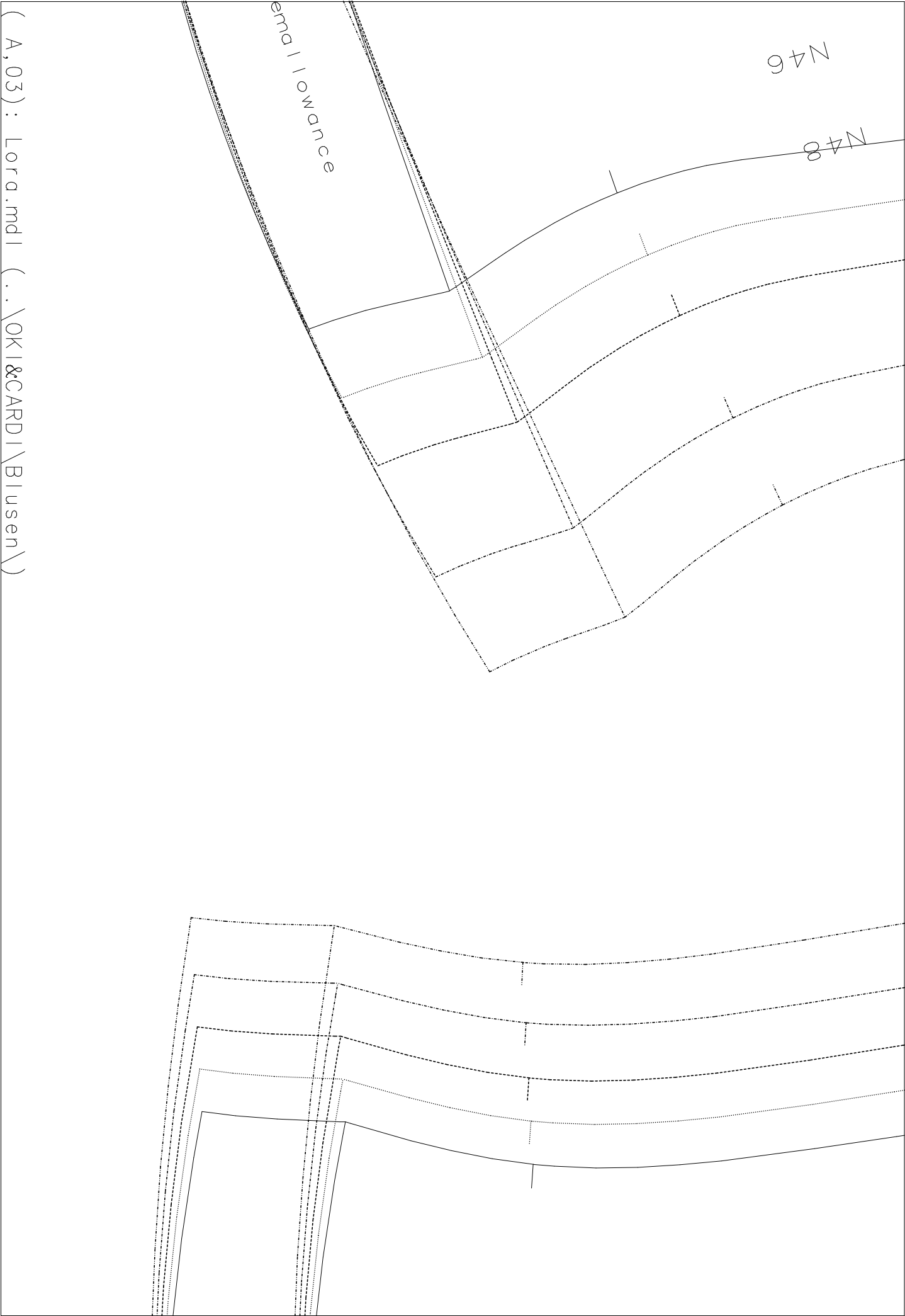
N40

N42

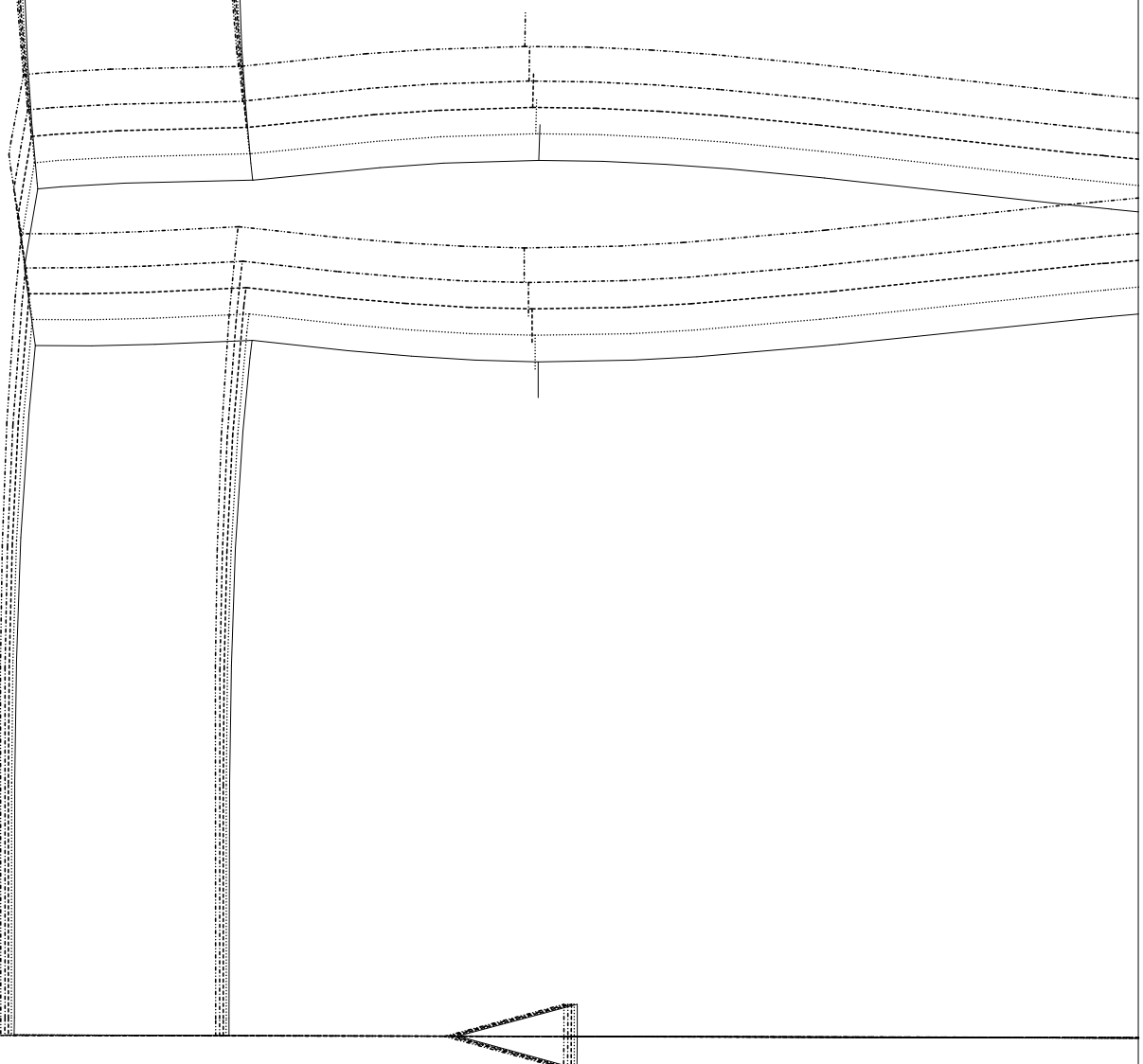
N44

Saumzugabe/H





( A,03): Lora.mdl (..\OKI&CARDI\Blusen\)

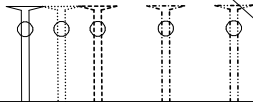


( A,04) : Lora.mdl ( . . \OKI&CARDI\BIusen\ )

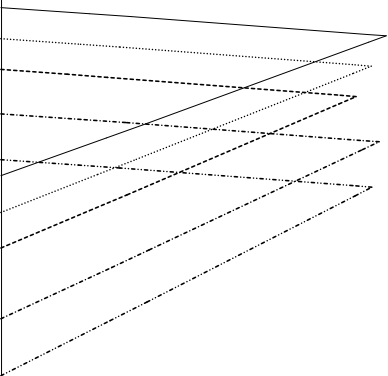
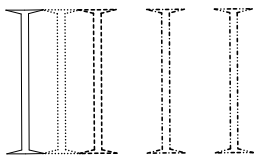
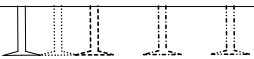
( B,01): Lora.mdl (..\OKI&CARDI\Blusen\)

VT Beleg/Front fac

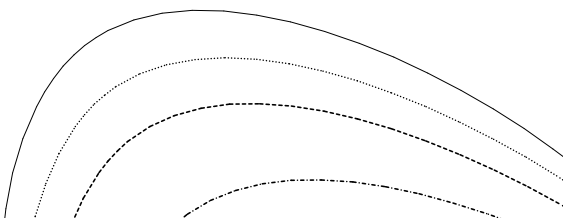
00

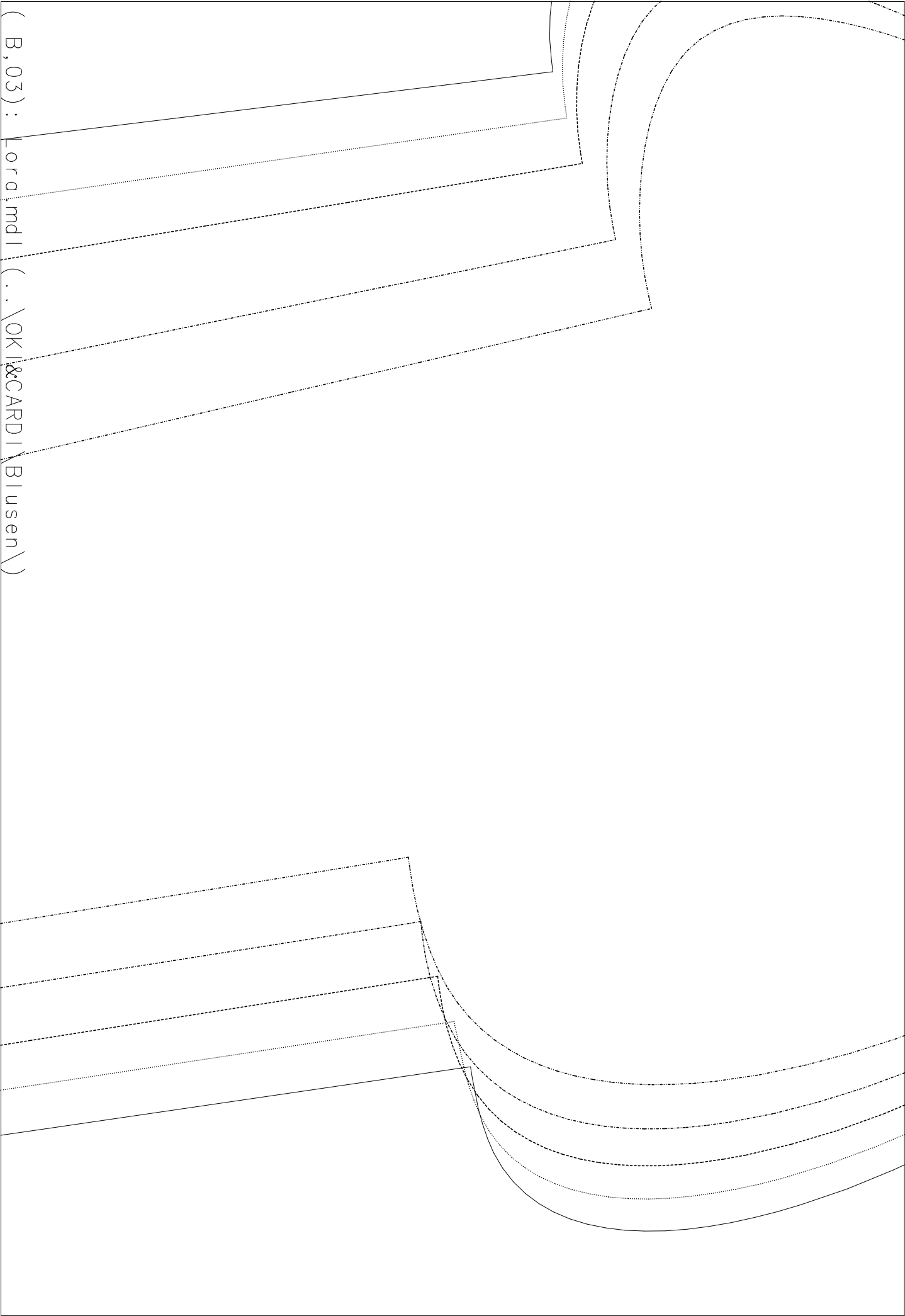


( B,02) : Lora.mdl ( ..\OKI&CARDI\Blusen\)



007  
Lora  
OKI&CARDI\Blusen  
Vorder teil I / Front p





( B,03) : Lora.mdl ( ..\OKI&CARDI\Blusen\ )

8 Rückenteil/Back piece  
I&CARDI\Blusen  
rd

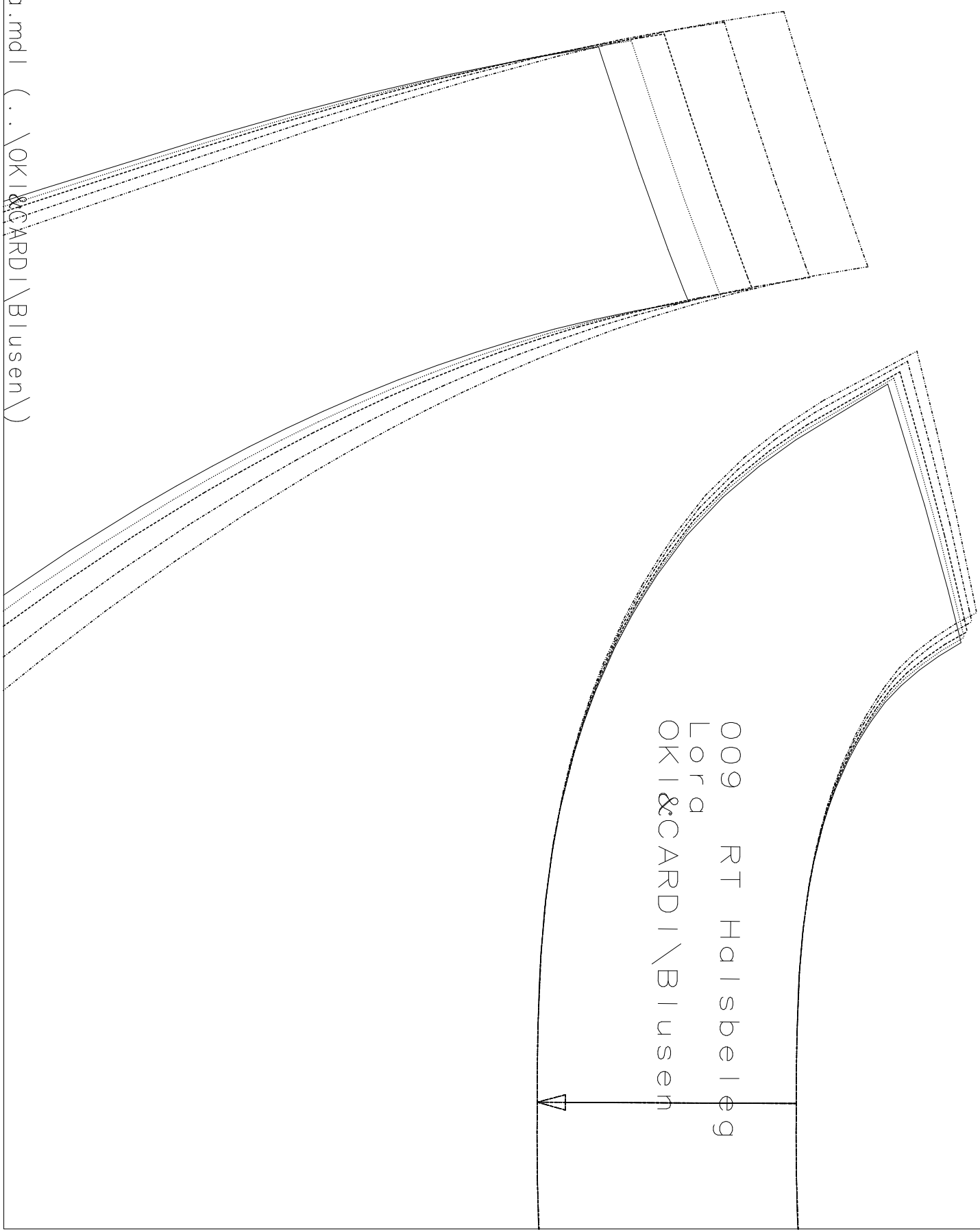
Im Stoffbruch/on fold

N40  
N42  
N44  
N46  
N48  
(08,04): Lora.mdl

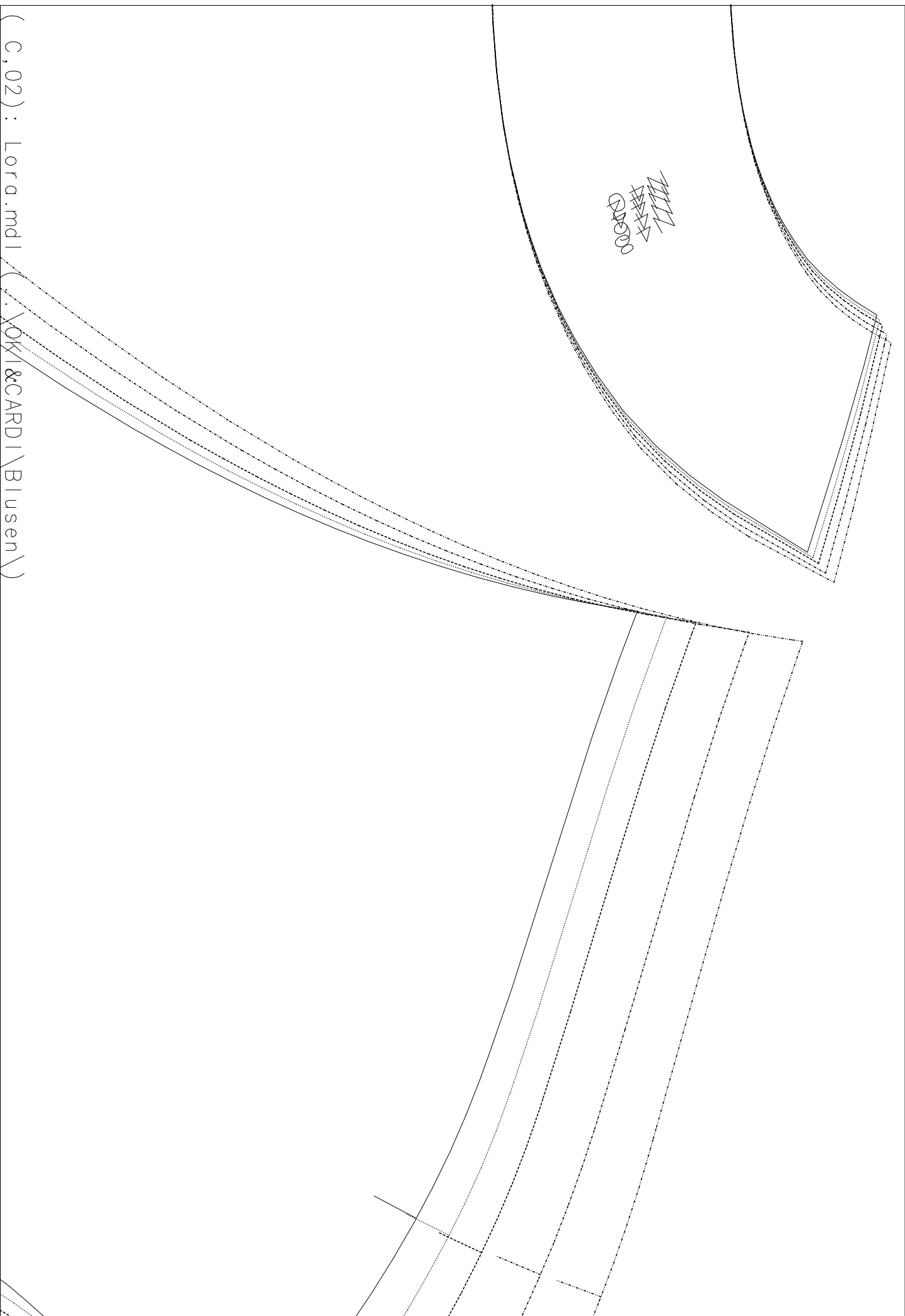
(..\OKI&CARDI\Blusen\)



009 RT Halsbælg  
Lora  
OKI&CARDI\Blusen

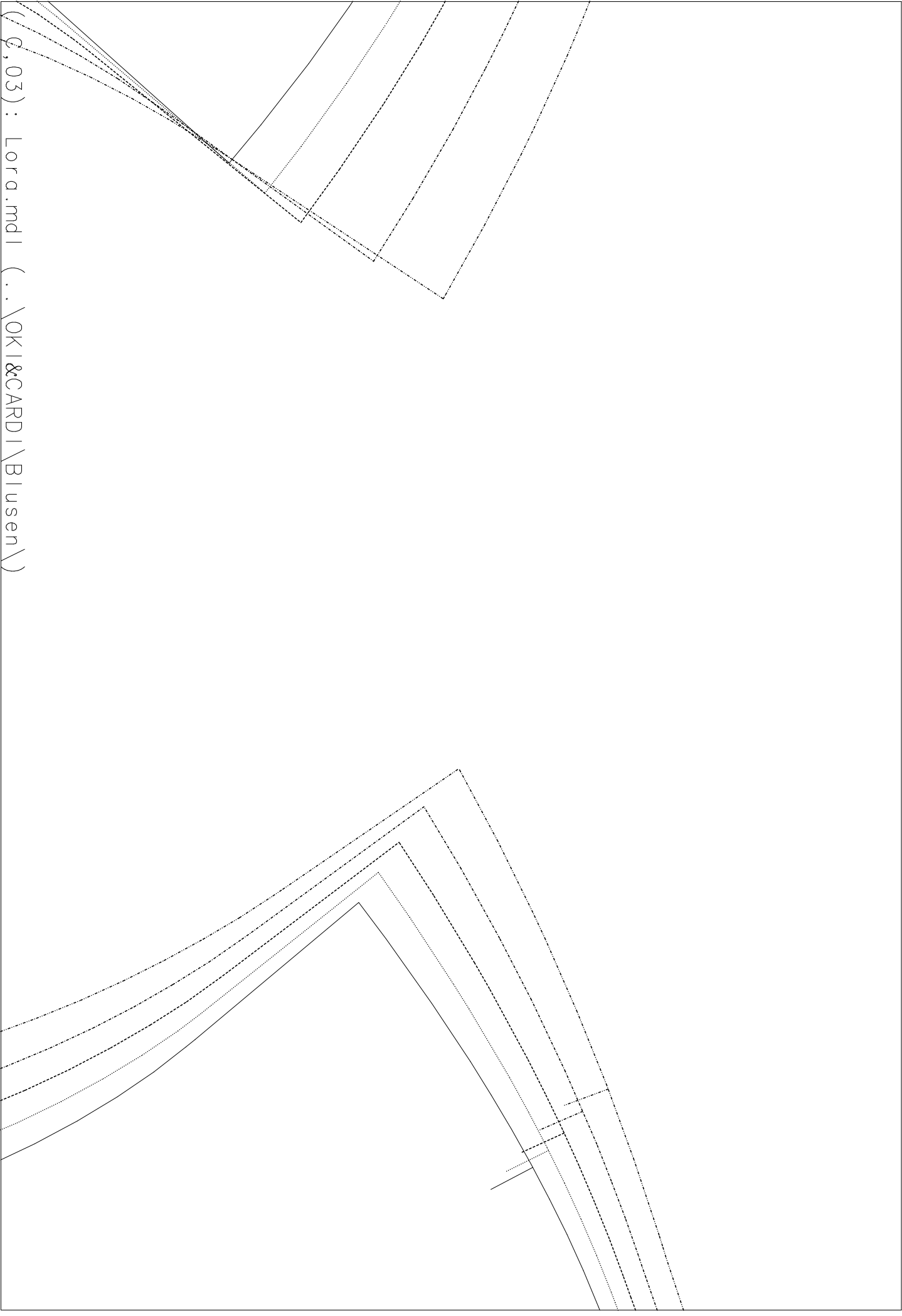


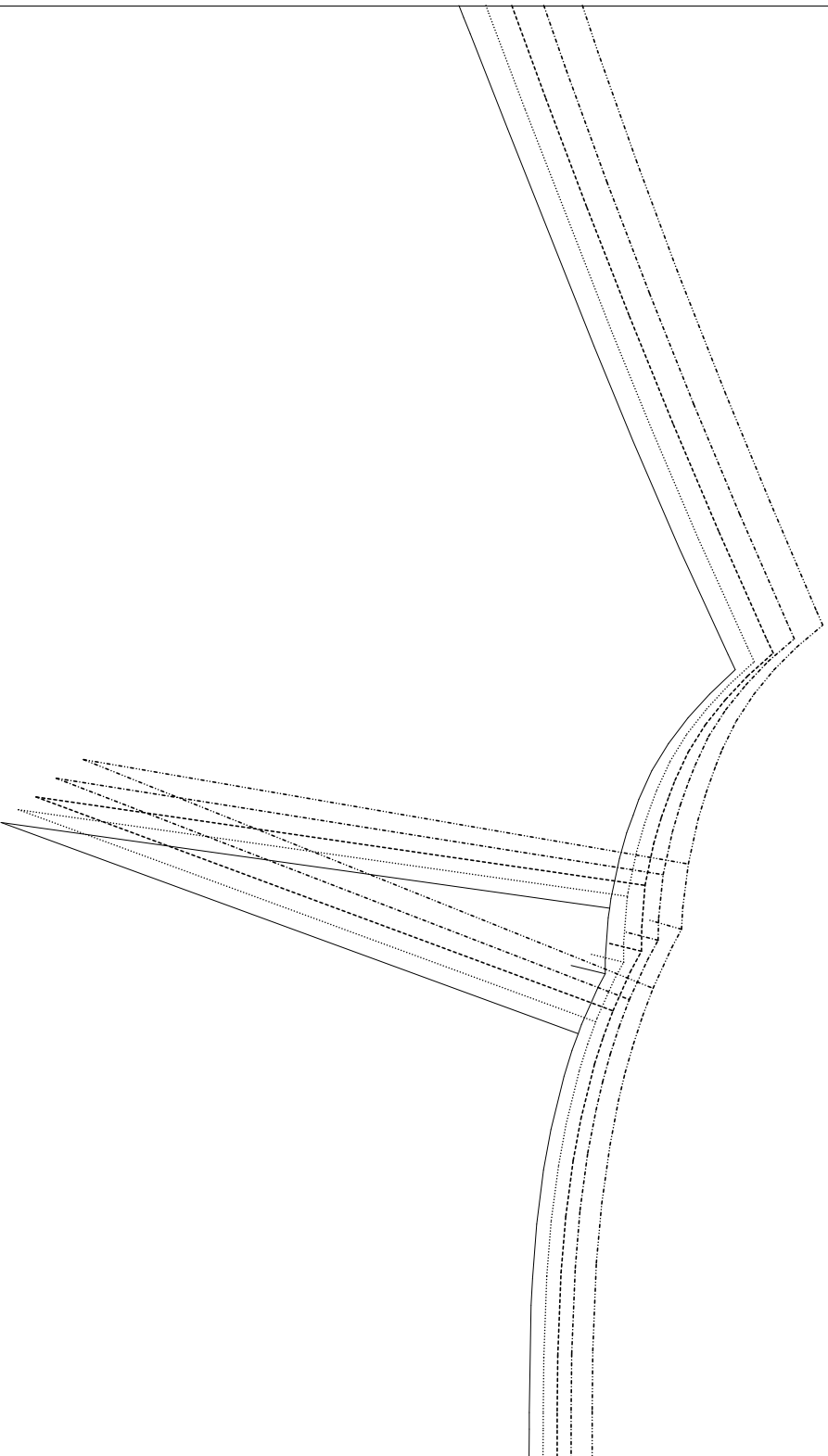
(C,01): Lora.mdl (..\OKI&CARDI\Blusen\)



(c,02): Lora.mdl

~~OKI&CARDI\B\usen\)~~





LOO  
(C,04): Lora.mdl (..\OKT&CARDI\Blusen\)