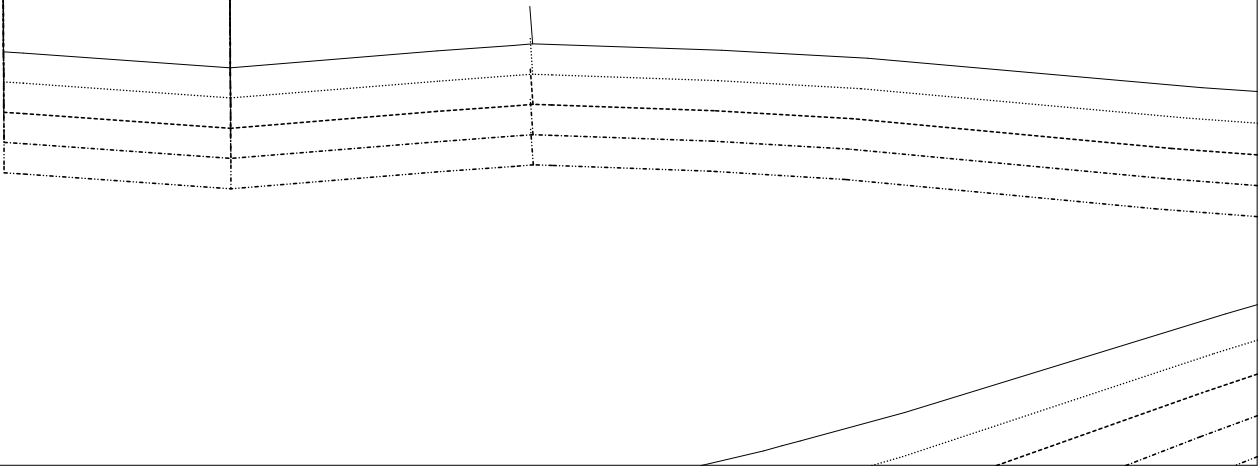
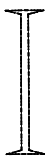
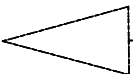


10 cm x 10 cm

Umbruchlinie/Fold



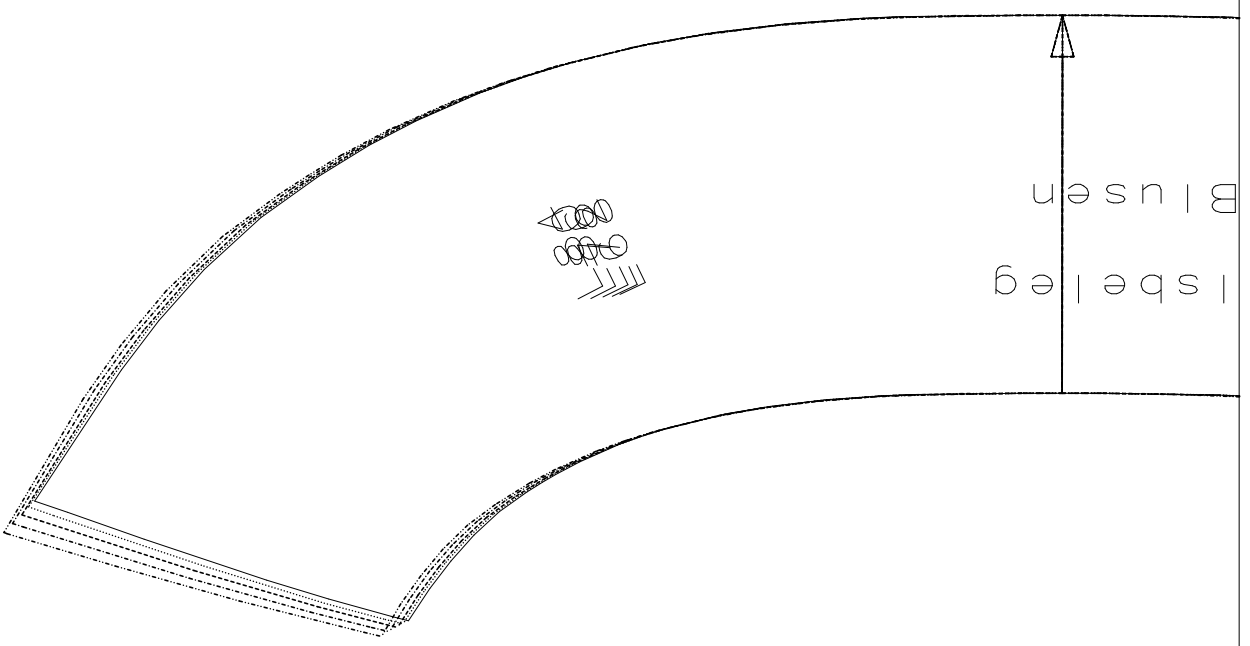
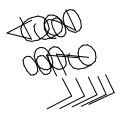
L68
L72
L76
L80
L84

Saumzugabe/Hemdlallowance

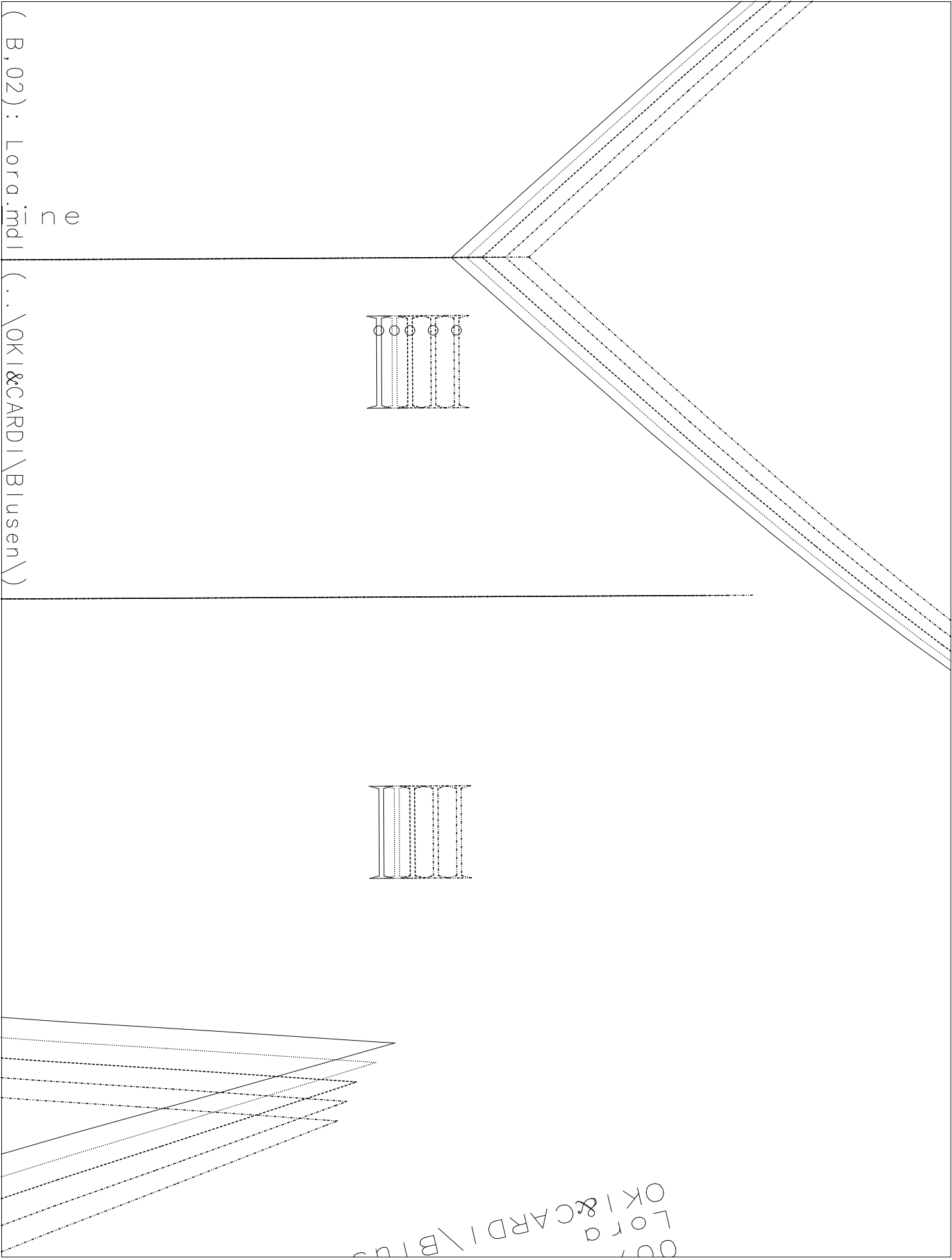


(A,04) : Lora.mdl (..\OKI&CARDI\Blusen\)

Isbeleg
Blusen



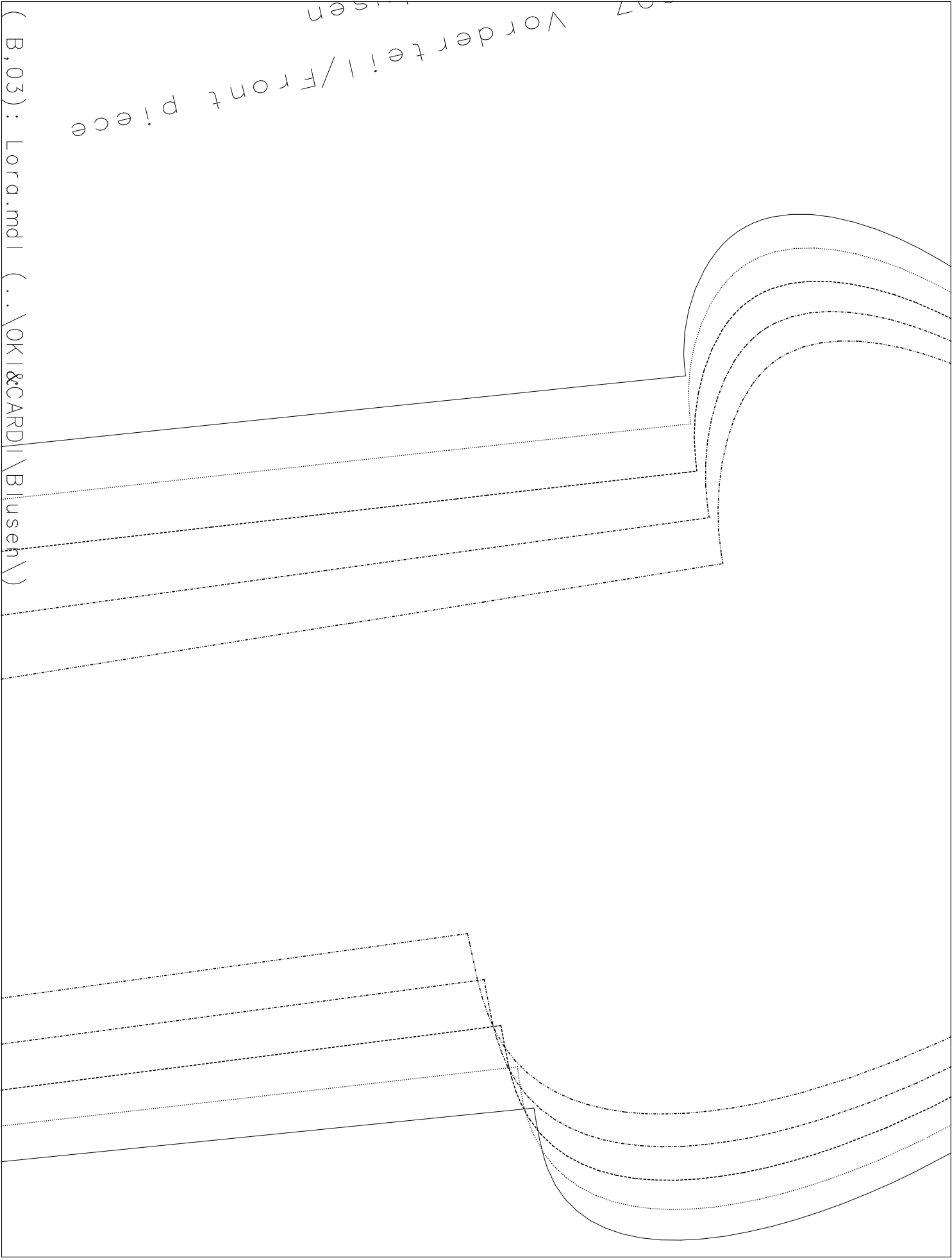
VT Beleg/Front facing



(B,02) : Lora.mdl

(..\OKI&CARDI\Blusen\

007
Lora
&CARDI\Blusen\



07
Vorderteil / Front piece

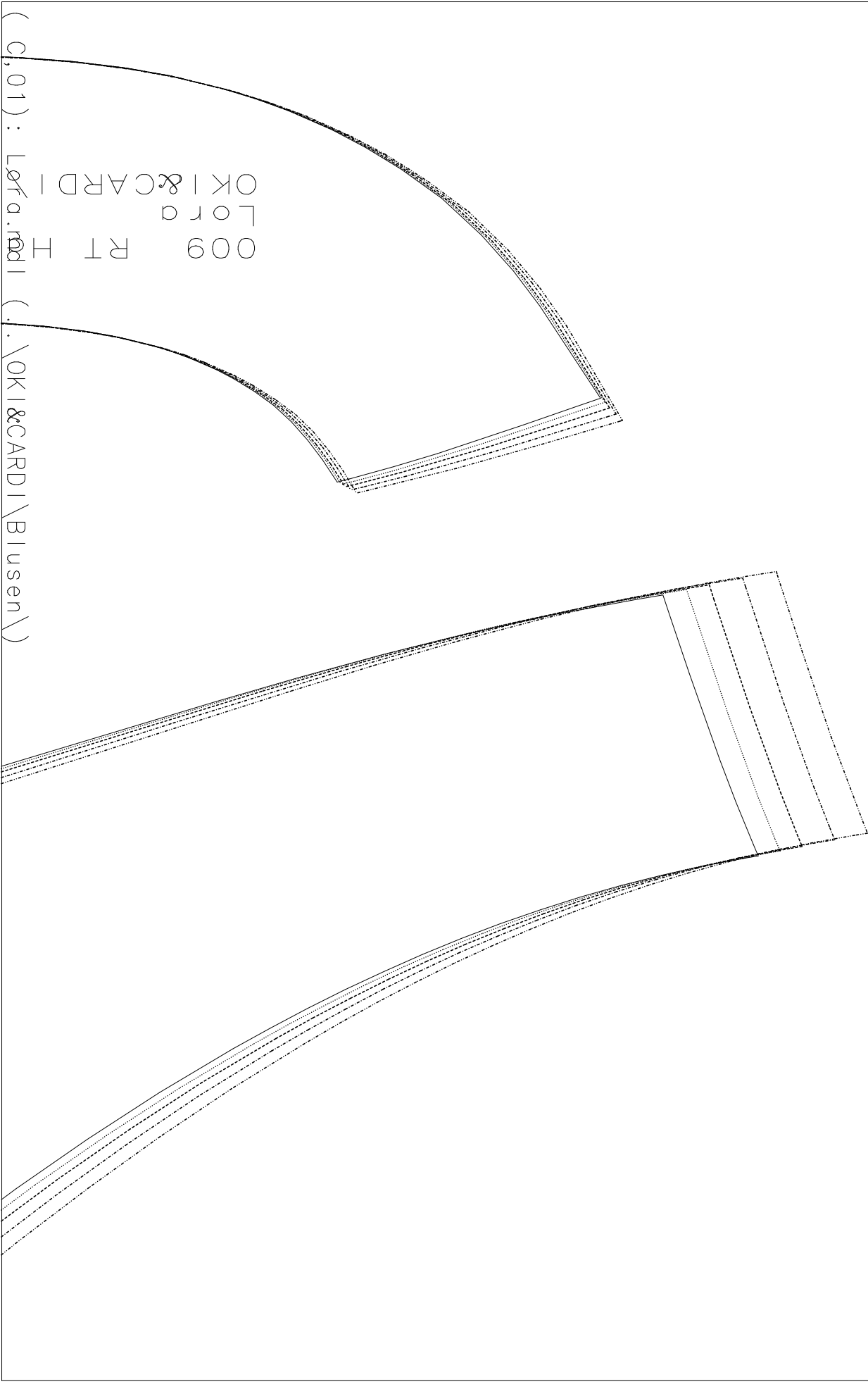
(B,03) : Lora.mdl (..\OKI&CARDI\Blusen\)

008 Rückenteil/Back piece
OKI&CARDI\Blusen
Lora

L68
L72
L76
L80
L84

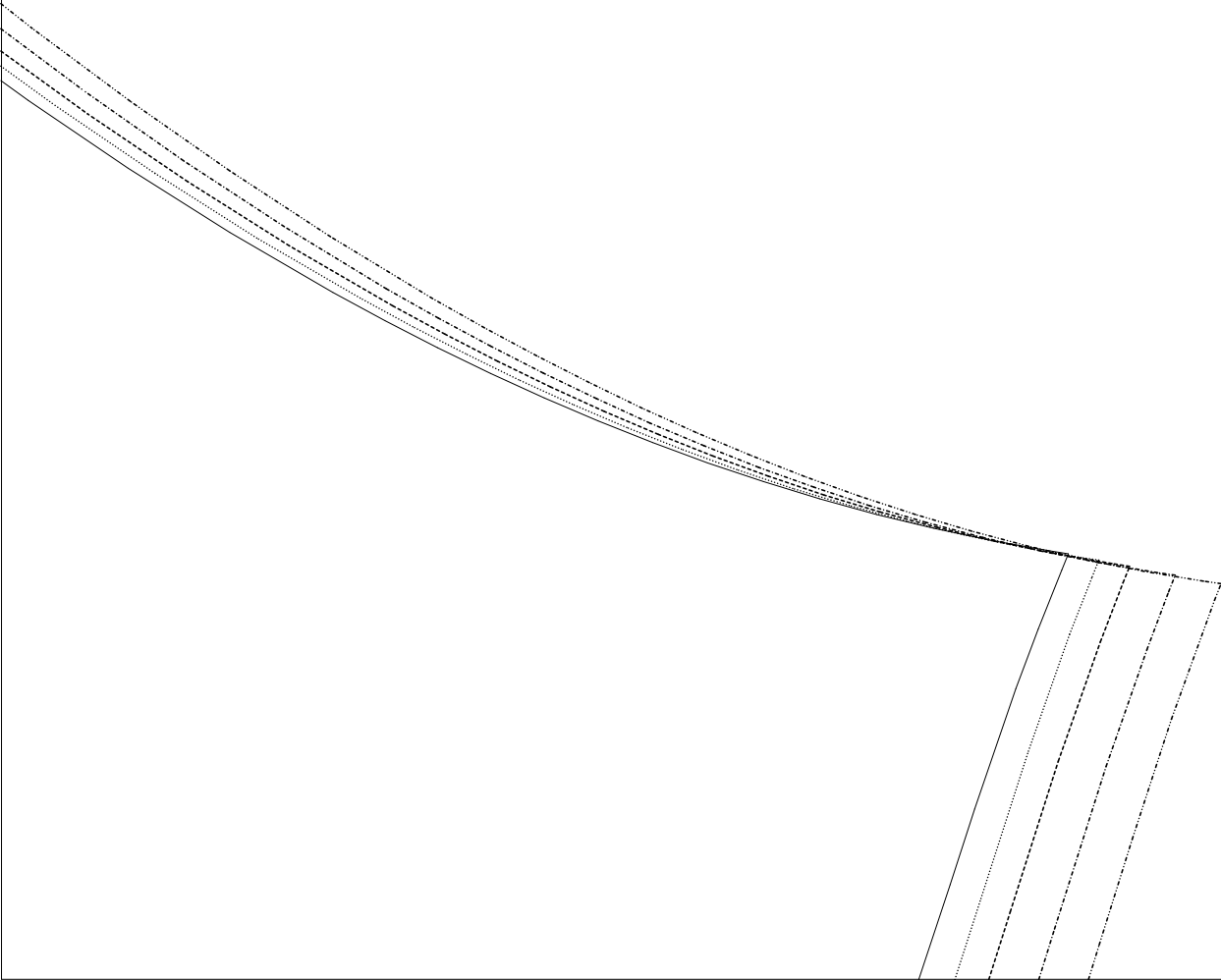
(B,04) : Lora.mdl (..\OKI&CARDI\Blusen\)

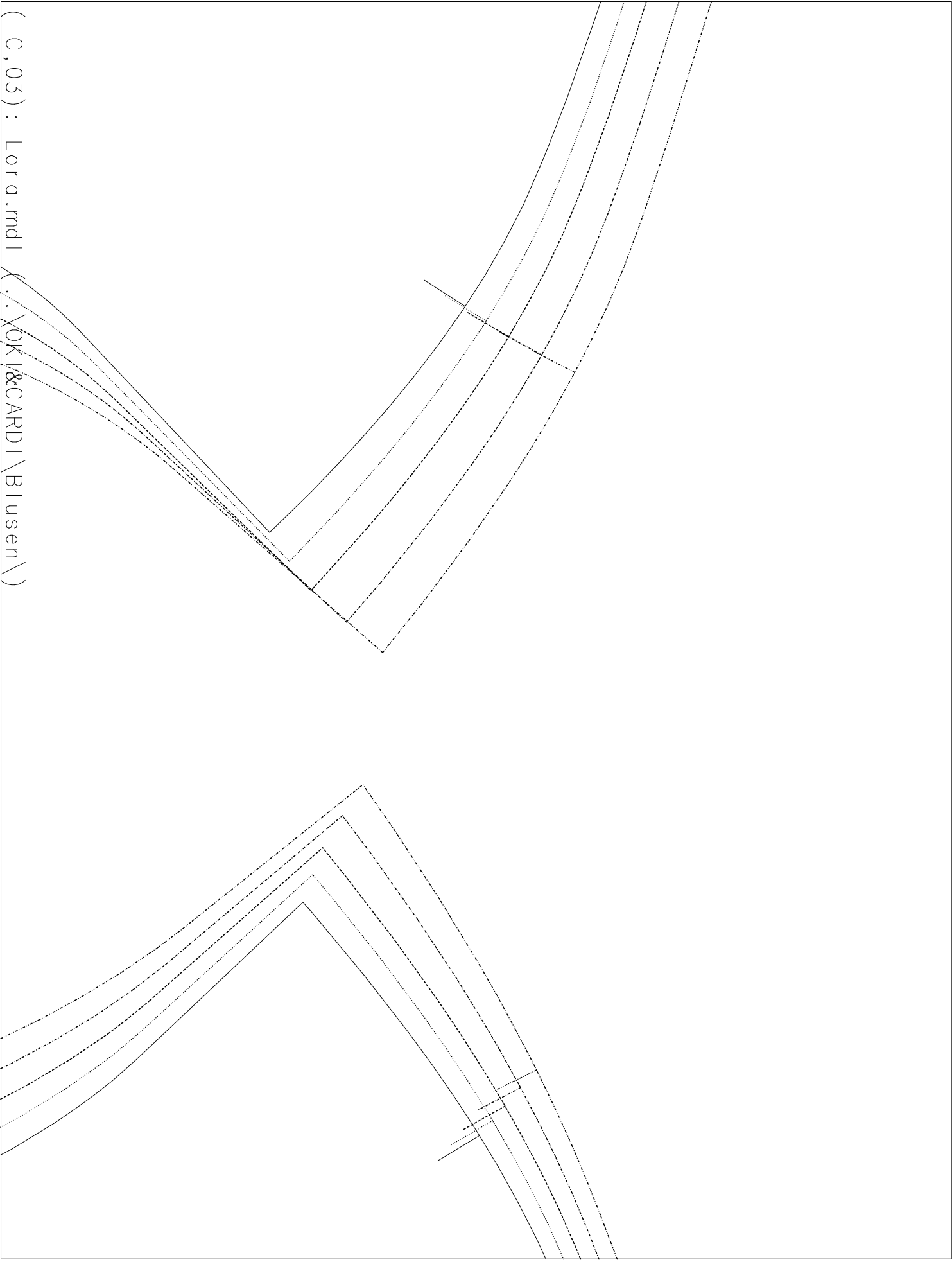
Im Stoffbruch/on fold



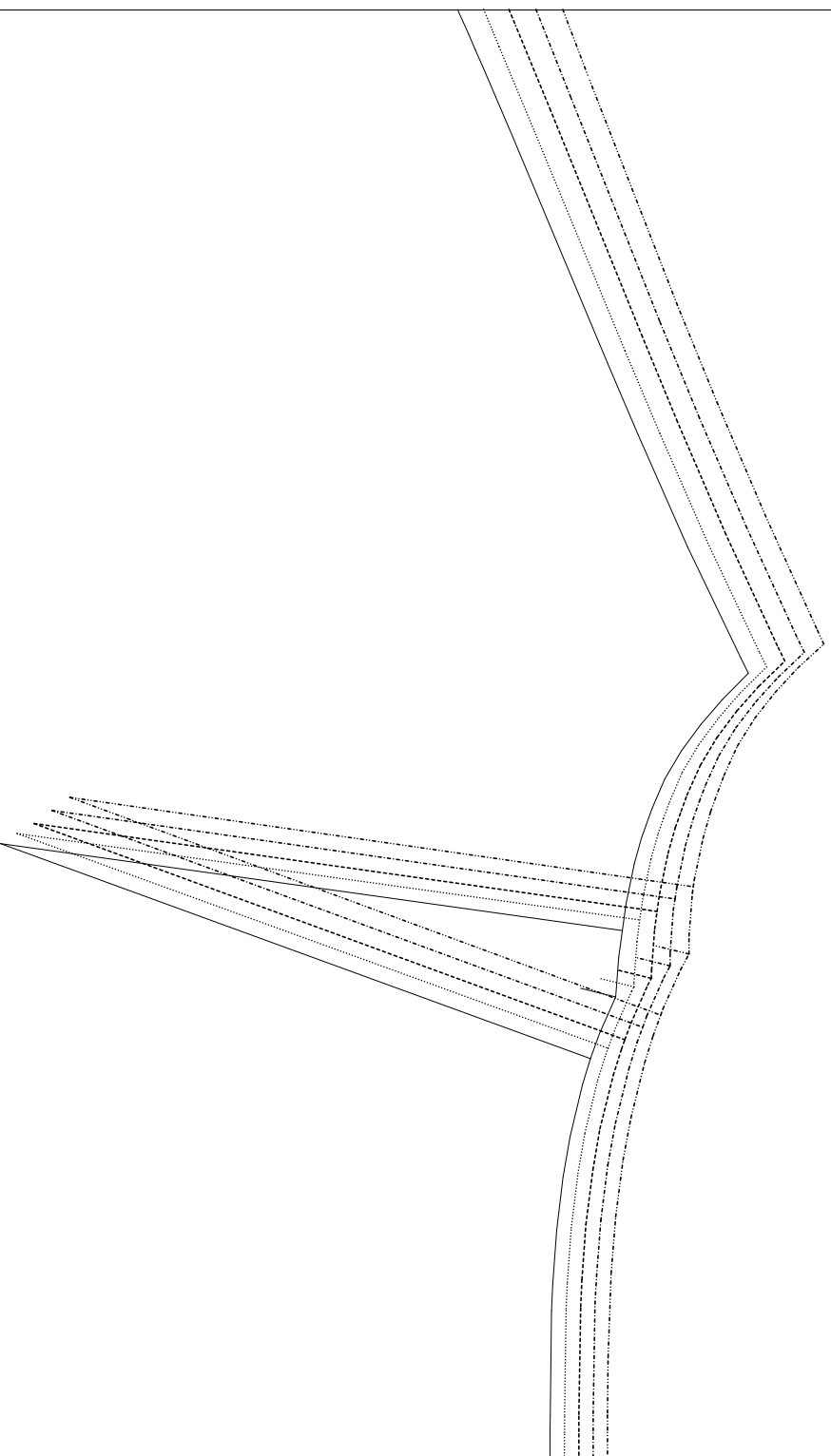
(C,01): Lørdag 009 RT H
OKI&CARDI
Lørdag
OKI&CARDI
(. \OKI&CARDI\Blusen\)

(C,02): Lora.mdl (..\OKI&CARDI\Blusen\)





(C, 03) : Lora.mdl (..\OK\&CARDI\Blusen\)



(C, 04) : Lora.mdl (..\OKI&CARDI\Blusen\)