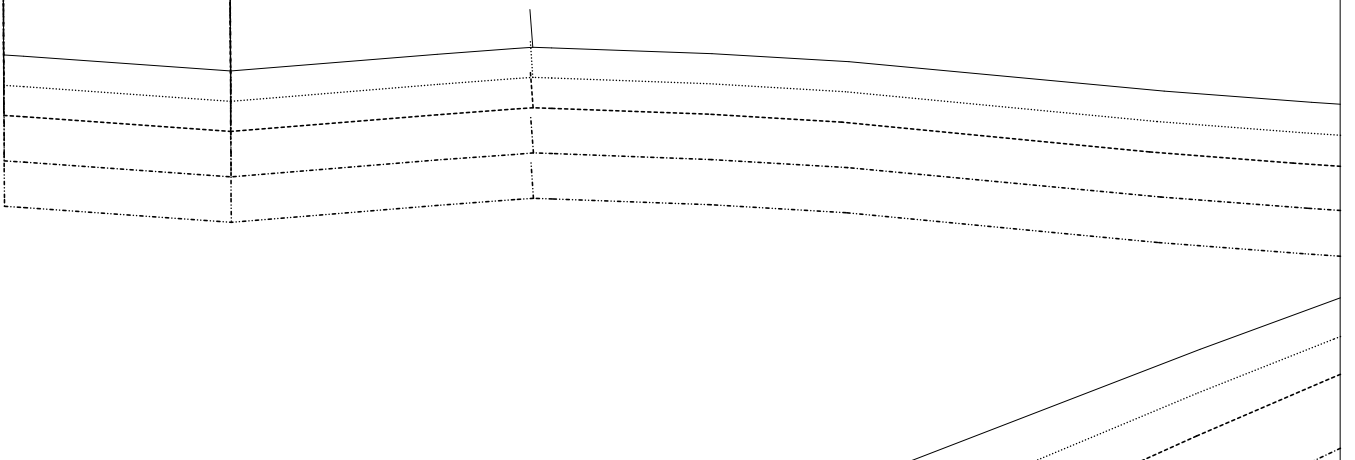
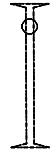
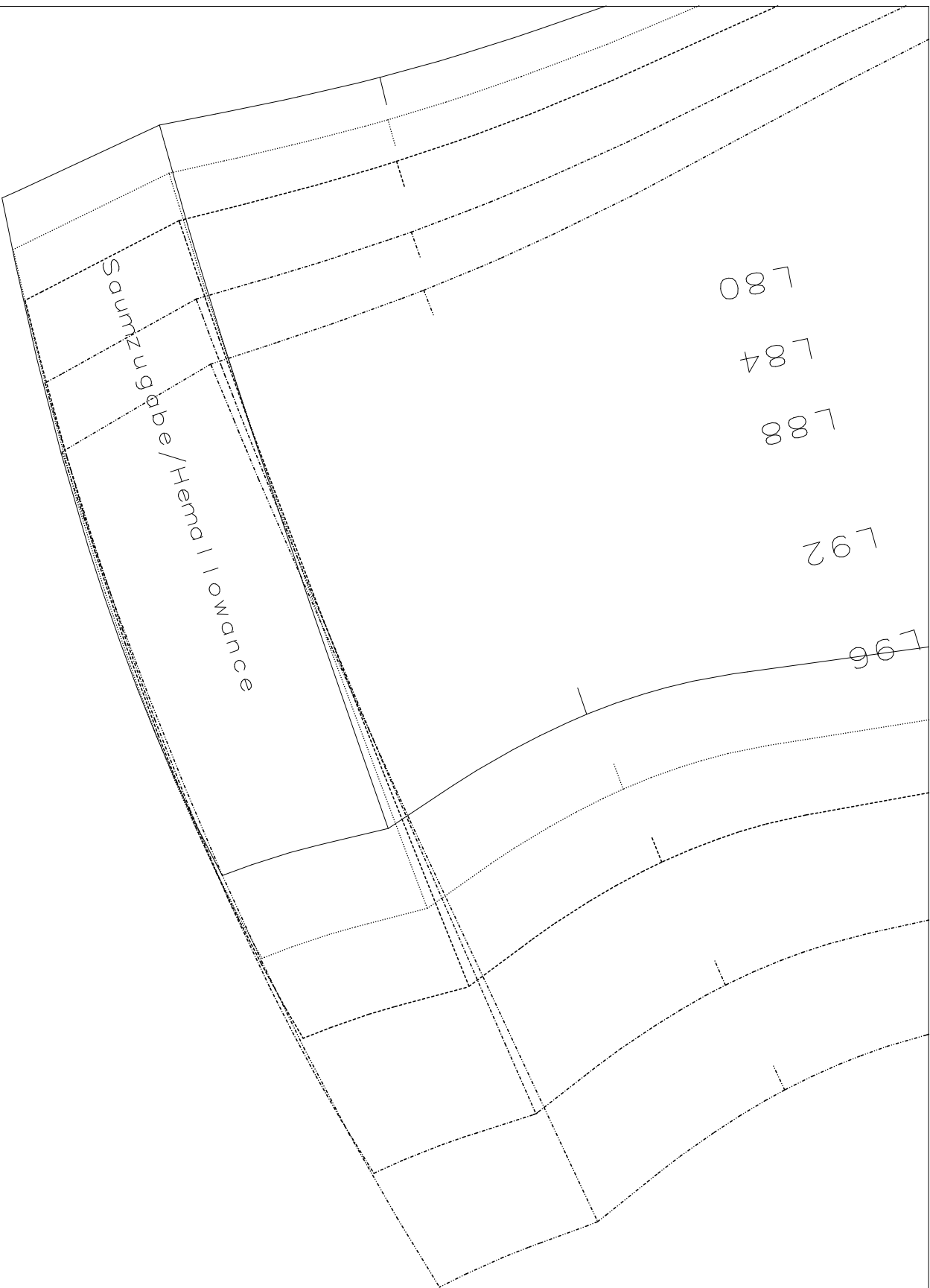
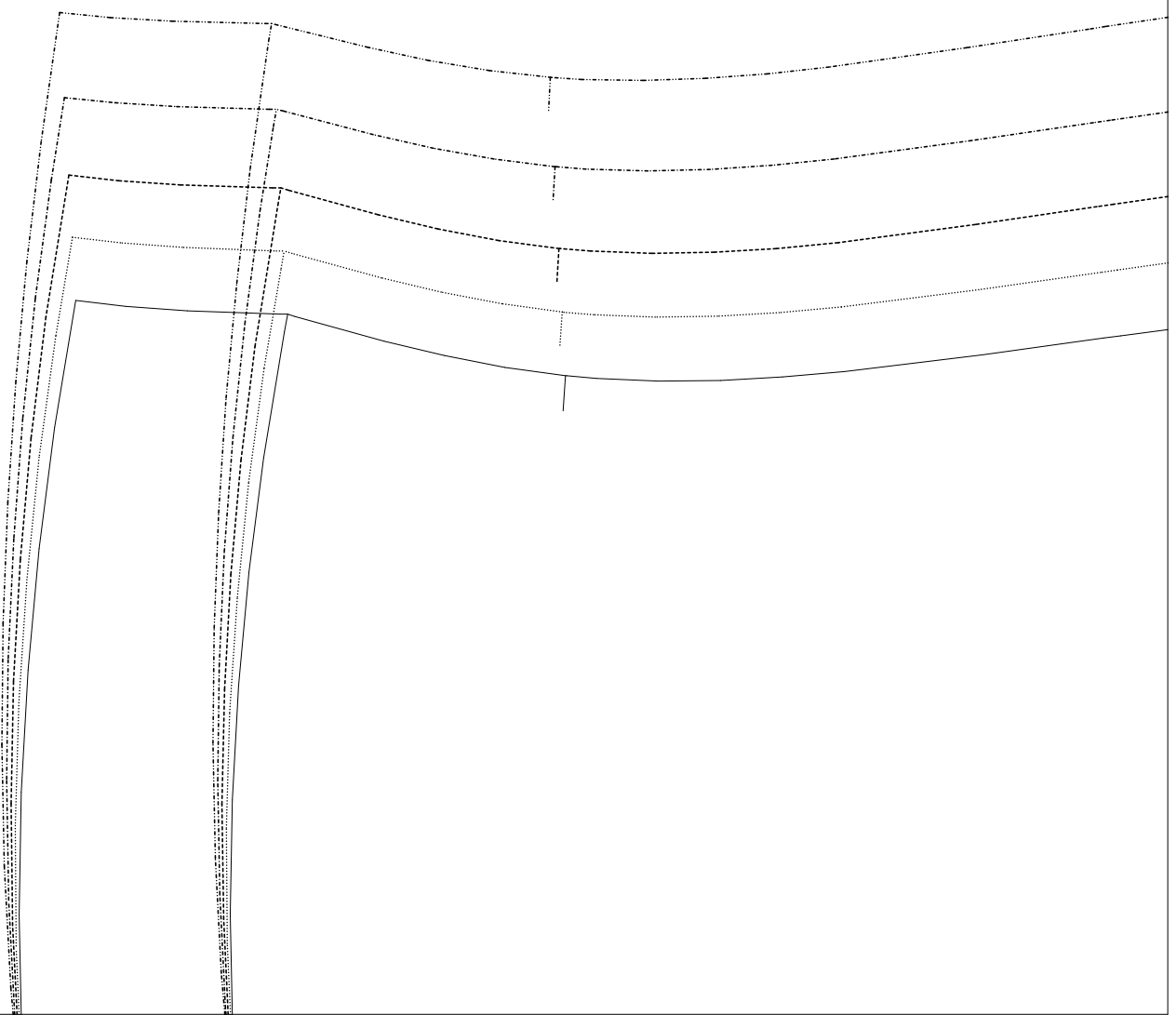


10 cm x 10 cm

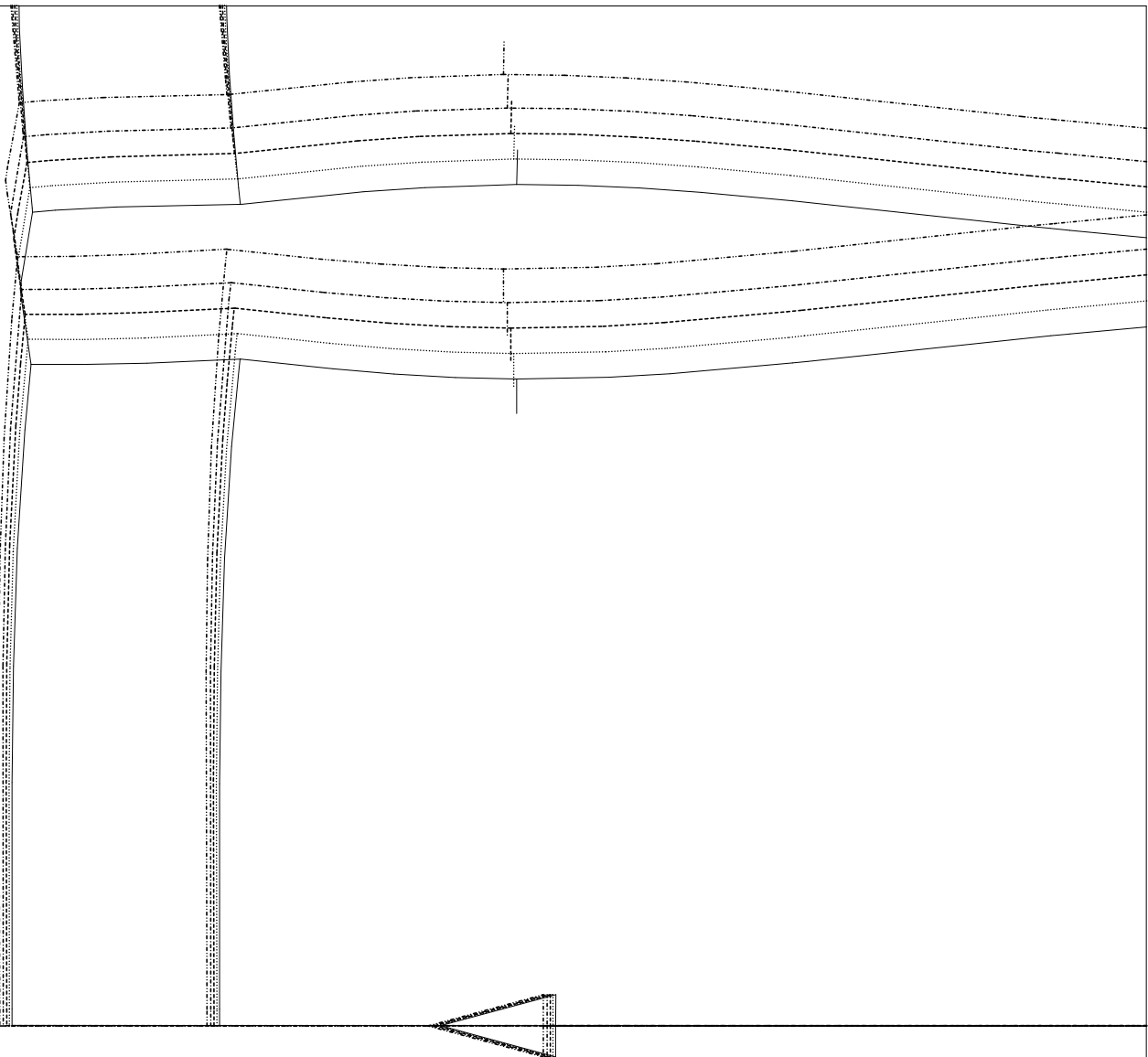
Umbruchlinie/Foldline







(A,04) : Lora.mdl (..\OKI&CARDI\Blusen\)



(A,05) : Lora.mdl (..\OK\&CARDI\Blusen\)

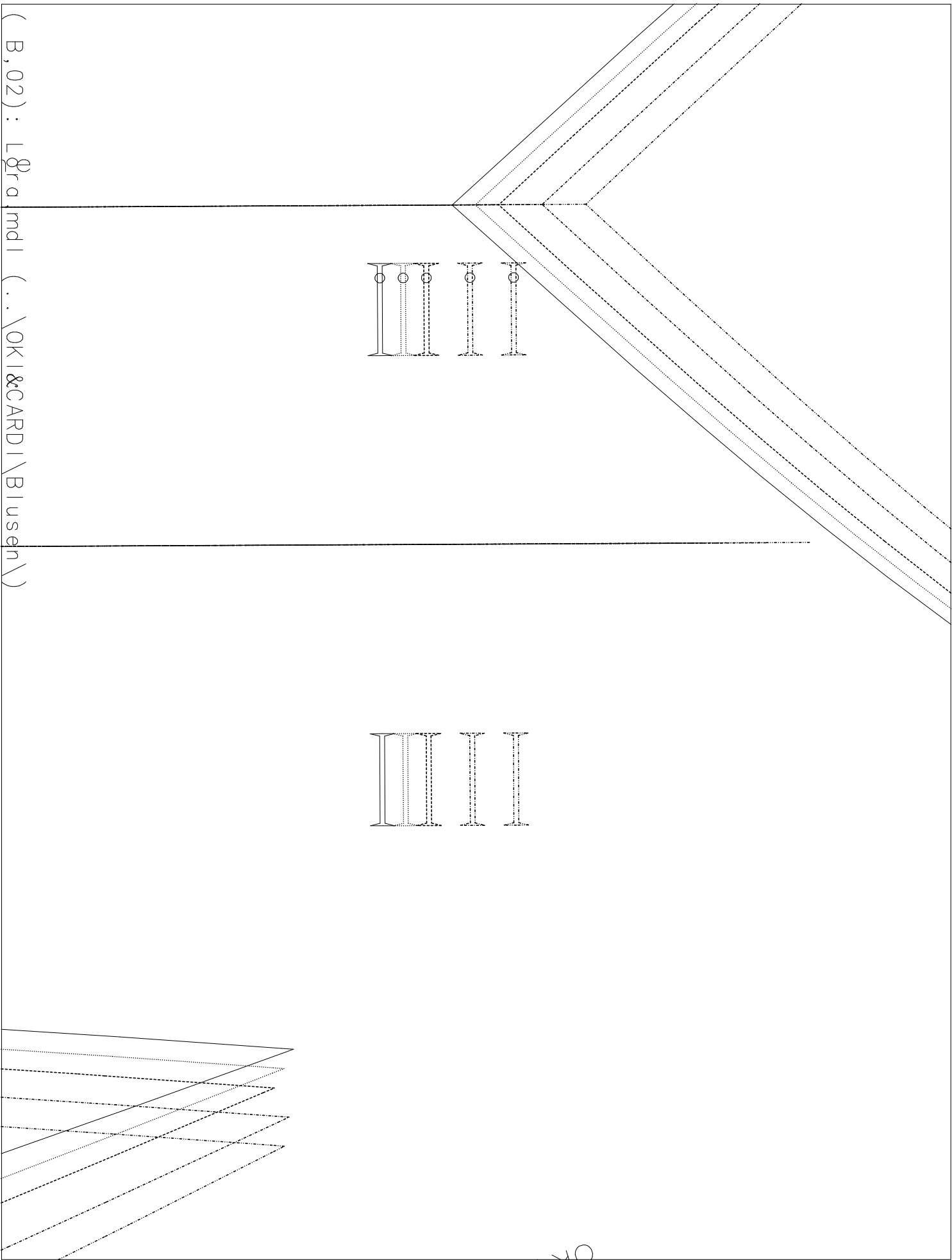
009 RT Halsbeleg
Lora
OKI&CARDI\Blusen

OKI&CARDI\Blusen

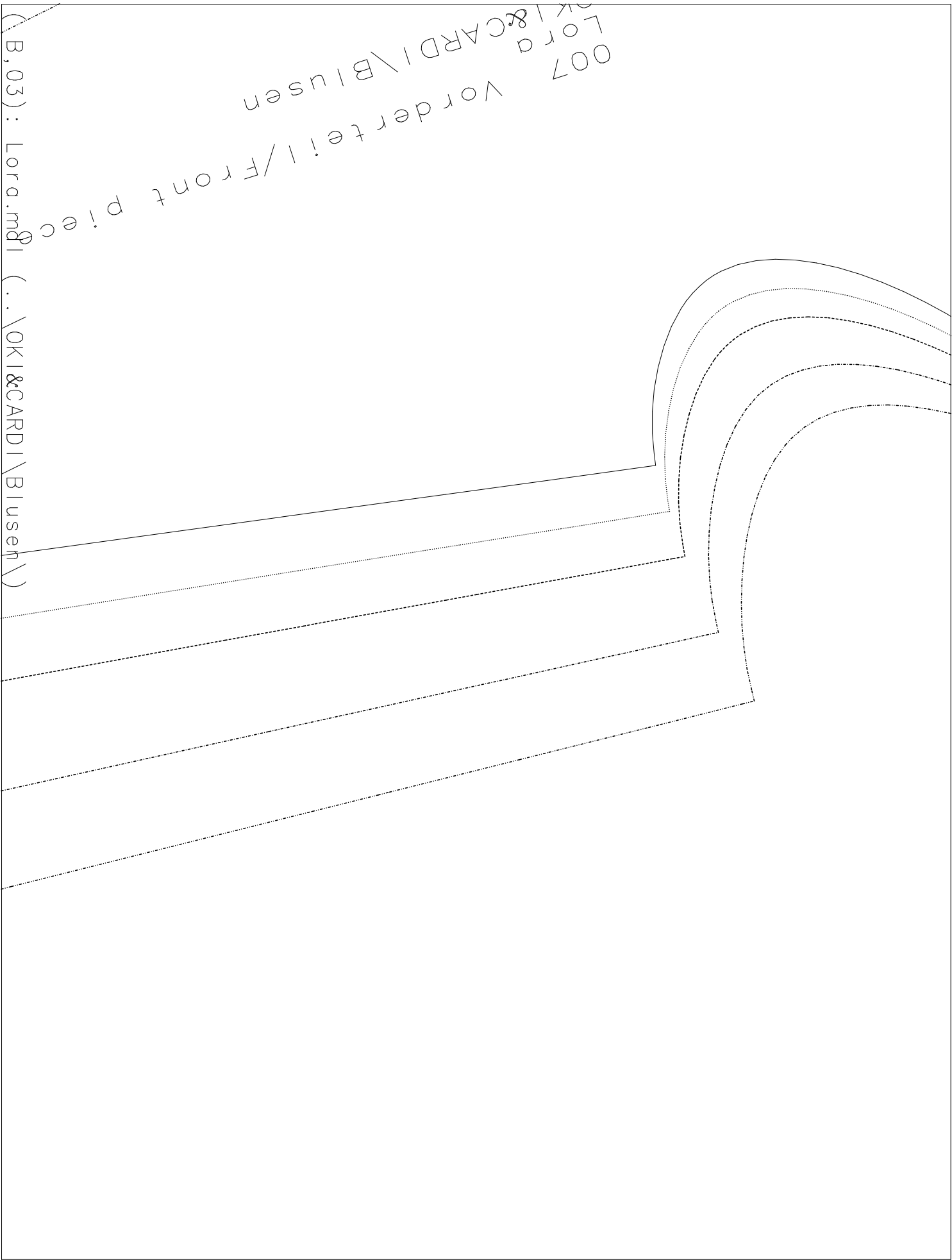


VT Beleg/Front facing

(B,01) : Lora.mdl (..\OKI&CARDI\Blusen\)

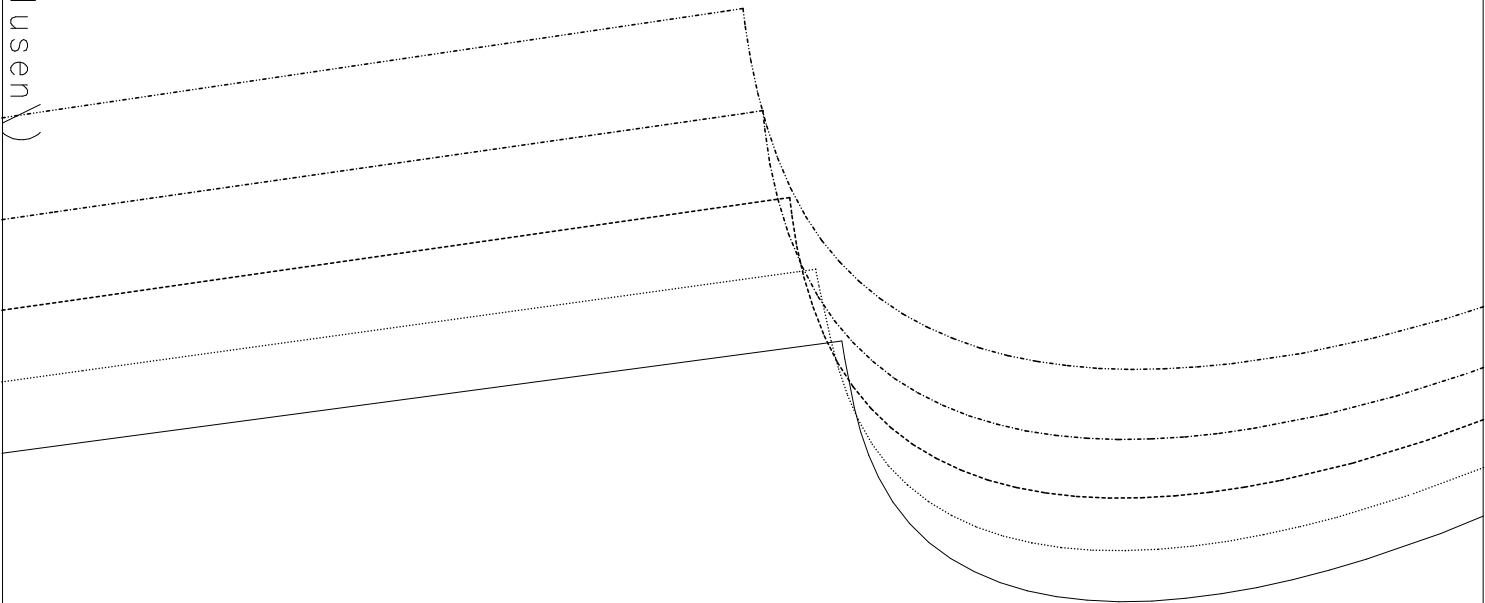


(B, 02) : L Gra, mdl (.. \OKI&CARDI\Blusen\)



007
Lora
OKI&CARDI\Blusen
vorder teil / Front piece
Lora
OKI&CARDI\Blusen
(B,03): Lora.mdl (..\OKI&CARDI\Blusen\)

(B,04) : Lora.mdl (..\OKI&CARDI\Blusen\)



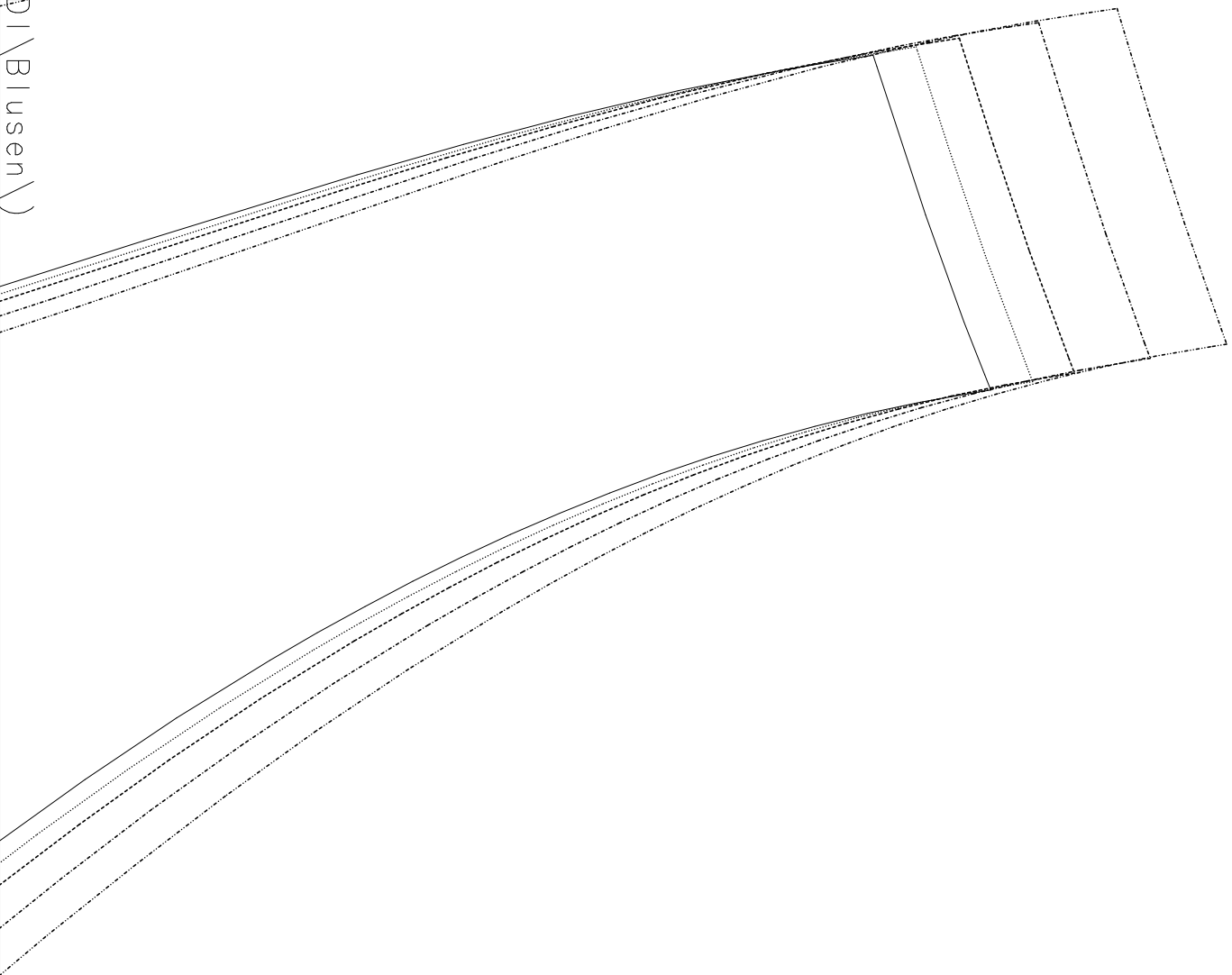
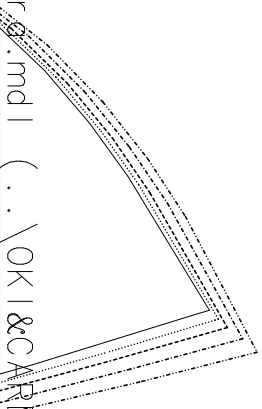
L80
L84
L88
L92
L96

a
&CARDI\Blusen
Rückenteil/Back piece

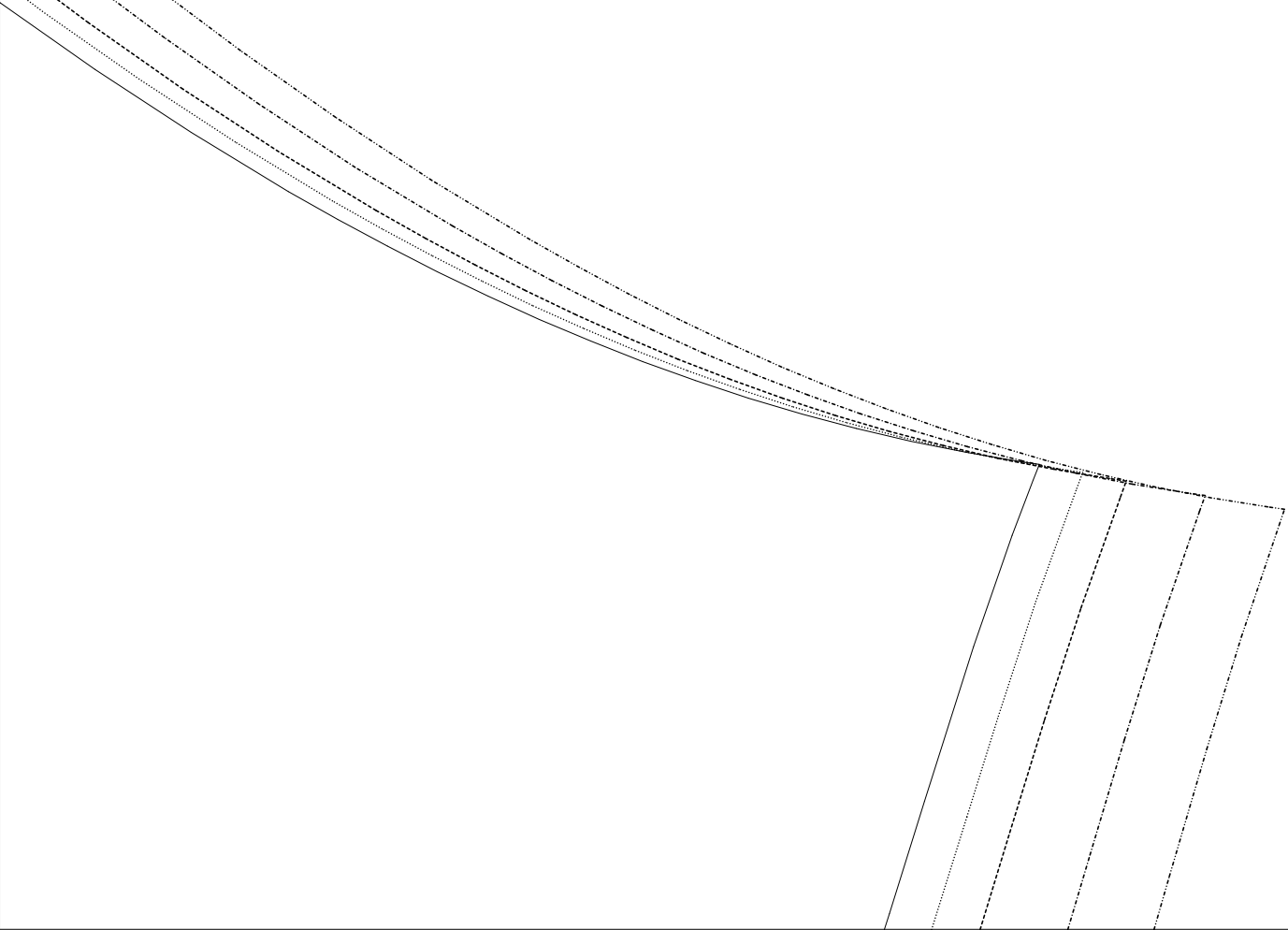
Im Stoffbruch/on fold

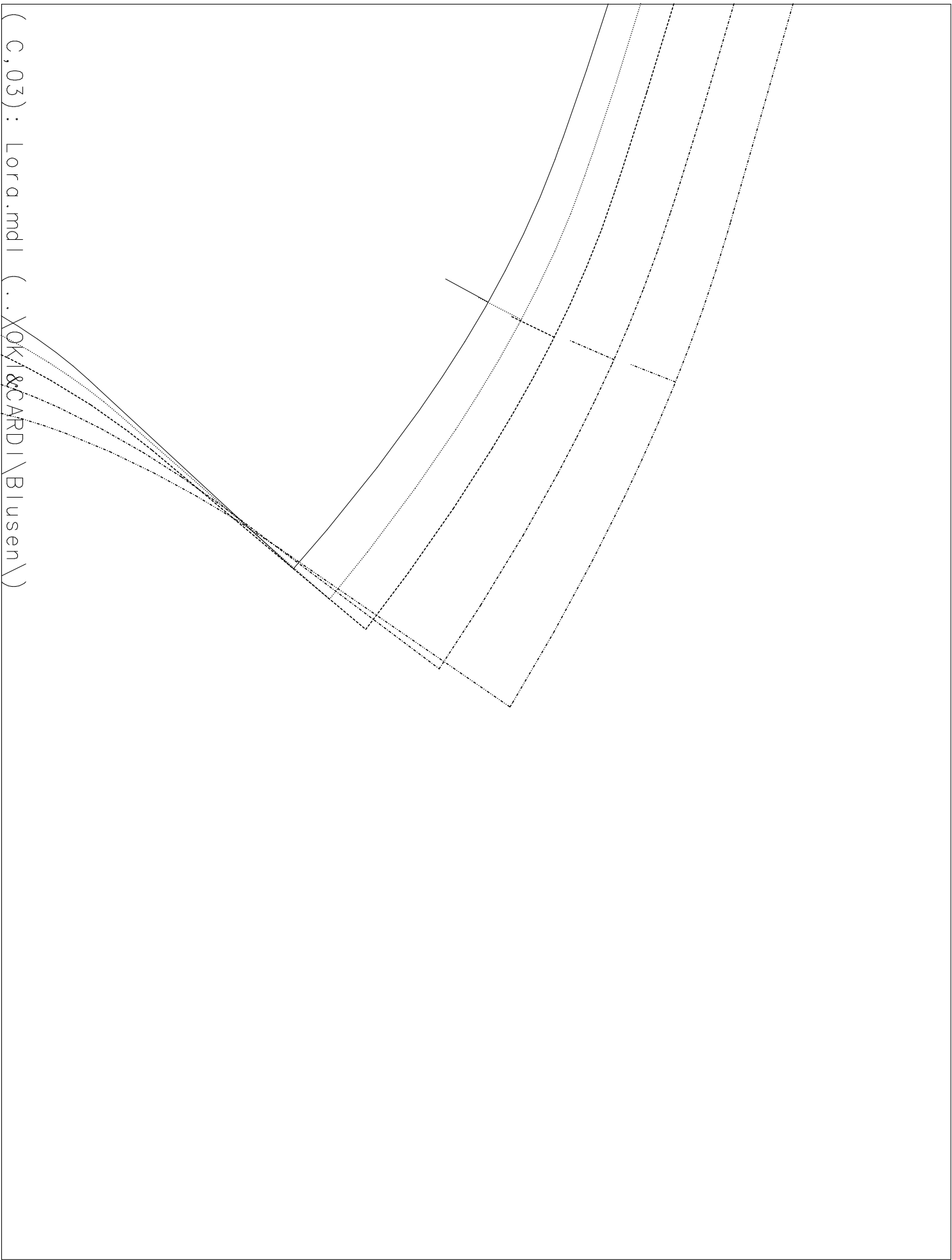
(B,05) : For q.mdl (..\OKI&CARDI\Blusen\)

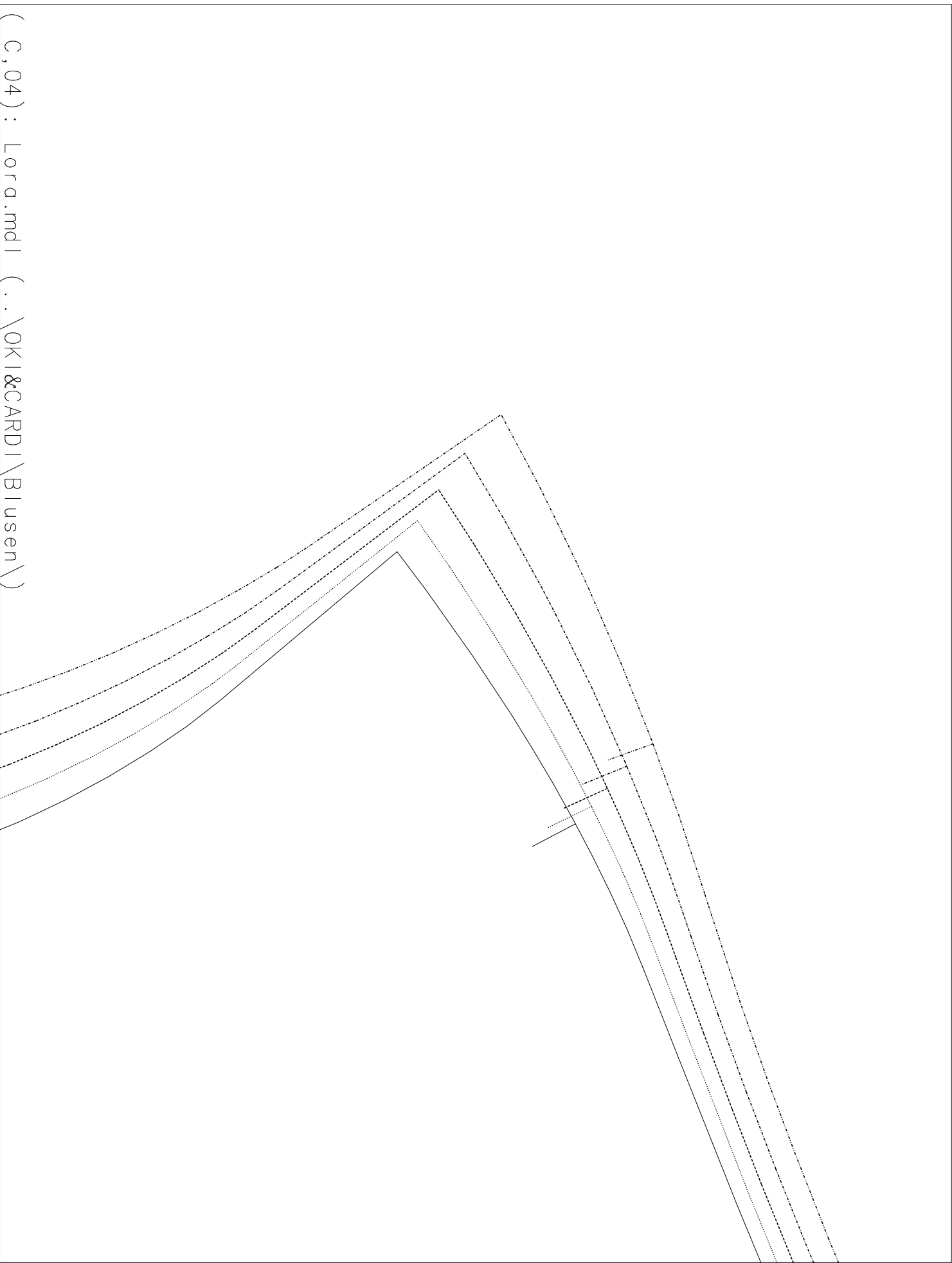
(C, 01) : Lord & Blusen (..\OK\&CARDI\Blusen\)

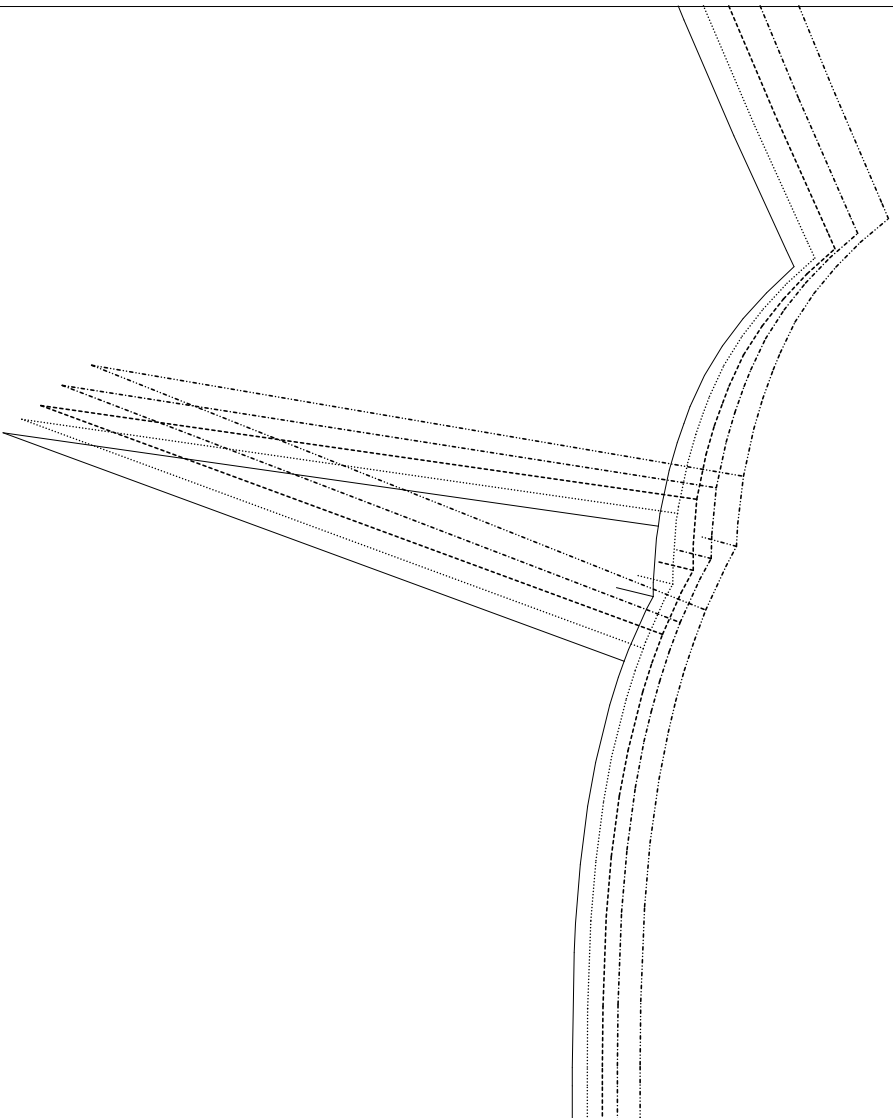


(C, 02) : Lora.mdl (..\OKI&CARDI\BlusenX)









LOO
OKO
6,050: Lora.mdl (..\OKI&CARDI\Blusen\)