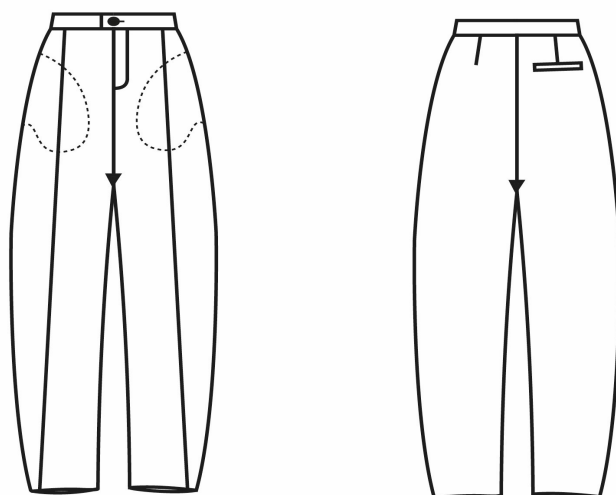


## *Sewing instruction Pant „GEORGIA“*



### Women-Sizechart

Sizes Bodyheight			Bust circumference		Waist circumference		Hip circumference	
Normal sizes	Long sizes	Short sizes	cm	inch	cm	inch	cm	inch
162- 171cm	over 172cm	under 161cm						
Size.34	Size.68	Size.17	82cm	32 ½	66cm	26	89cm	35
Size.36	Size.72	Size.18	85cm	33 ½	69cm	27½	93cm	36 ½
Size.38	Size.76	Size.19	88cm	34 ¾	72cm	28 ½	97cm	38
Size.40	Size.80	Size.20	92cm	36 ¼	76cm	30	101cm	39 ¾
Size.42	Size.84	Size.21	96cm	37 ¾	80cm	31 ½	105cm	41 ¼
Size. 44	Size.88	Size.22	100cm	39 ½	84cm	33	109cm	43
Size.46	Size.92	Size.23	106cm	41 ¾	90cm	35 ½	114cm	44 ¾
Size.48	Size.96	Size.24	112cm	44	96cm	37 ¾	119cm	46 ¾

*The Bustcircumference determines the size for coats, jackets, shirts, dresses, blouses, tops, vests...!*

***The Hipcircumference determines the size for pants and skirts !***

## Pattern pieces

### *From pant fabric*

---

- Front pant – 2x
- Back pant – 2x
- Waistband – 1x
- Pocketbag for front sideseam pocket – 4x

(they can be cut from lining fabric)

- Back pocket welt – 1x
  - Zipper facing – 1x (12cm x 20cm incl. seamallowance)
- 

### *From contrast fabric*

---

- Pocket bag for back pocket – 1x

Width: 17cm incl. seamallowance

Length: 31cm incl. seamallowance

## Material requirements

Material	shortsizes	normalsizes	longsizes
Outer fabric	2m	2,1m	2,2m
Lining fabric	0,35m		
Interfacing : 0,4m			
Bias binding for finishing seam allowances: 5m			
Zipper: 1x 20cm long			
Button -1piece			

### **Fabric Recommendation:**

Woven fabrics without stretch that have a soft, fluid drape, can be easily pleated/draped, and have a bit of weight to them. Good options are:

- **Tencel**  
Similar in softness to viscose, but often considered more premium and more stable in shape. Has a beautiful heavy drape.
- **Crepe**  
Especially nice for soft pleats and movement in the fabric. Available in viscose, polyester, or

blended qualities.

- **Modal**  
Very soft and smooth with a fluid character, while remaining comfortable to wear.
- **Linen-Viscose Mix**  
A good option if you want a more natural look: relaxed drape, but less stiff than pure linen.
- **Wool Crepe**  
A more premium and elegant option with beautiful deep pleats and slightly more structure.
- **Cotton fabrics** that hold shape slightly better and create a soft sculptural silhouette rather than a completely fluid drape.

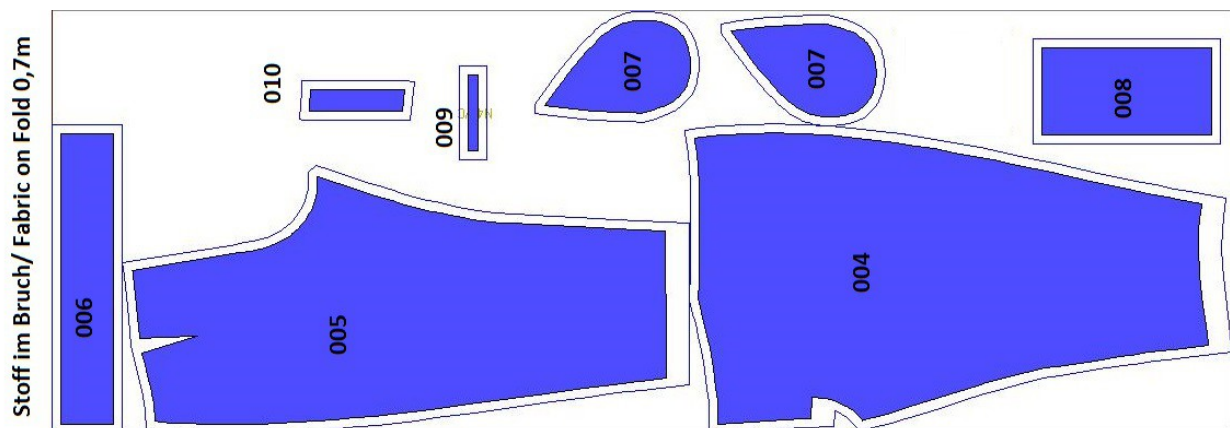
---

## Original Fabric: Baumwollstoff

### Layplan

#### The pattern pieces include:

- 1.5 cm seam allowance for French seam finishing on the side seams, inseams, and pockets
- 1 cm seam allowance for all other seams
- Minimum fabric width: 1.4 m



# Sewing steps

## Preparation

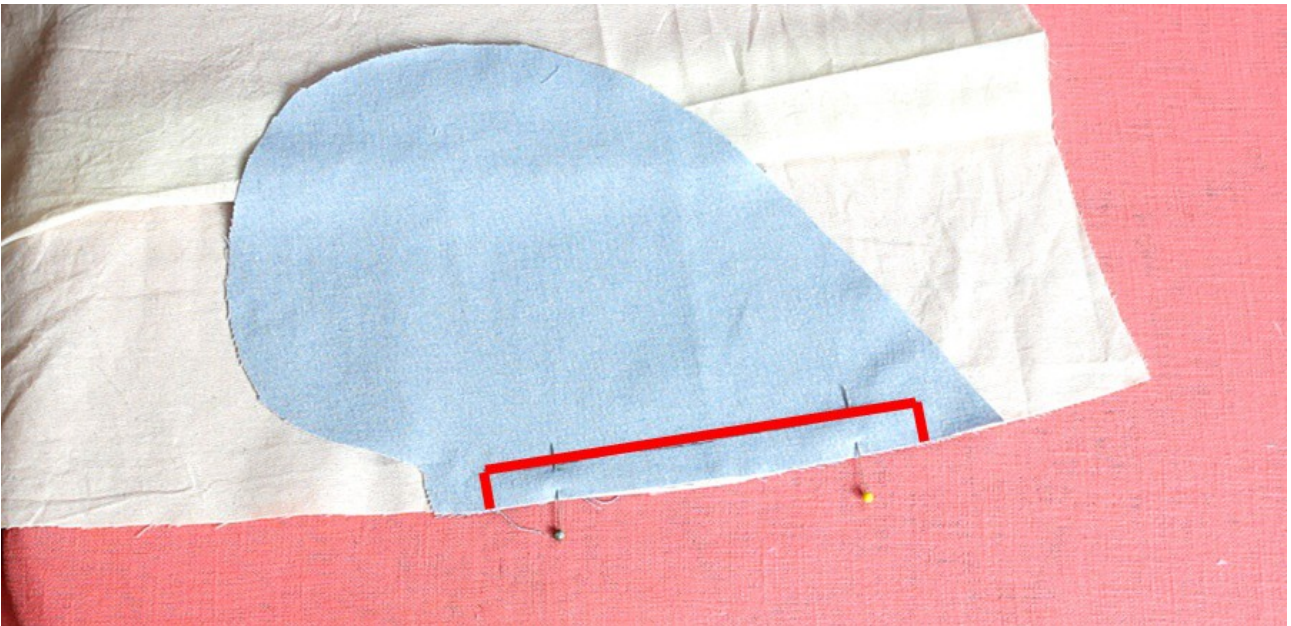
- Apply interfacing to the fabric pieces; press interfacing onto pocket openings, neck pieces and, if needed, sleeve hem pieces.
  - Transfer all markings onto the fabric.
  - Check my helpful Youtube-Tutorials : <https://www.youtube.com/@Okistyle-sewing>
  - There is also a video-Tutorial for this pant: <https://youtu.be/mbM4S3SB7wk>
- 

## Step1: Finish the front pants

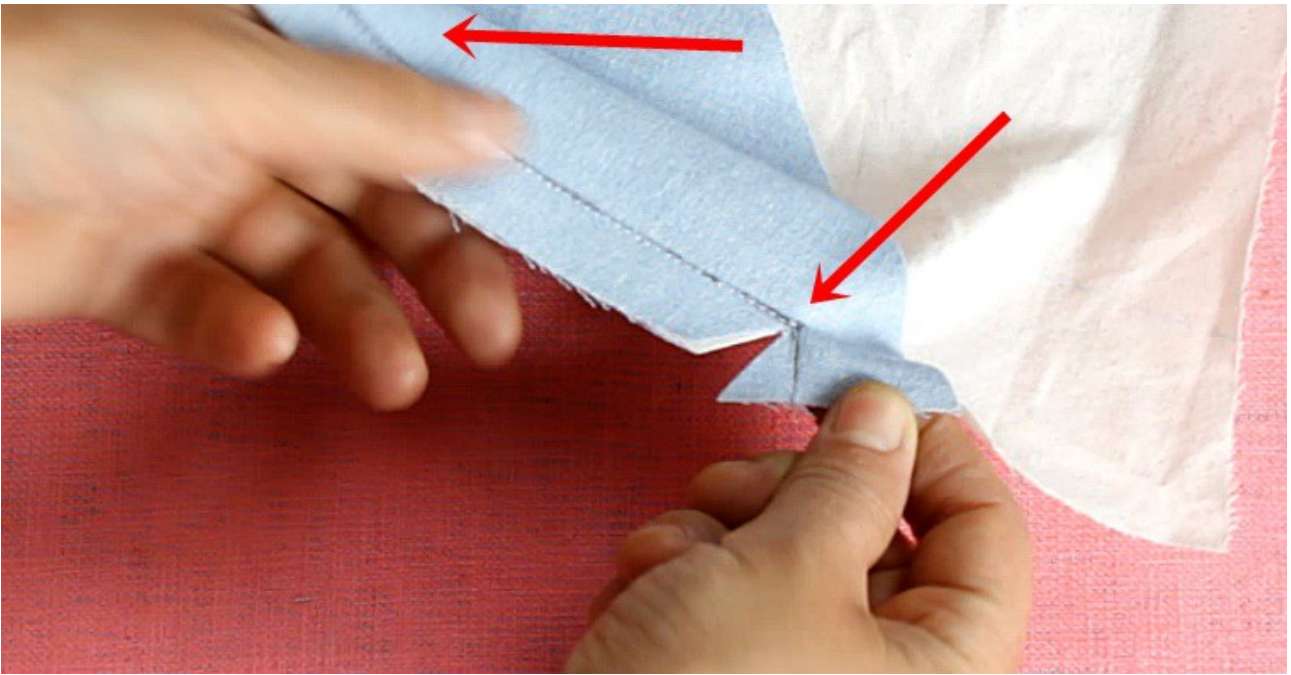
### Front Side Seam Pocket

#### 1. Attach Pocket Facing

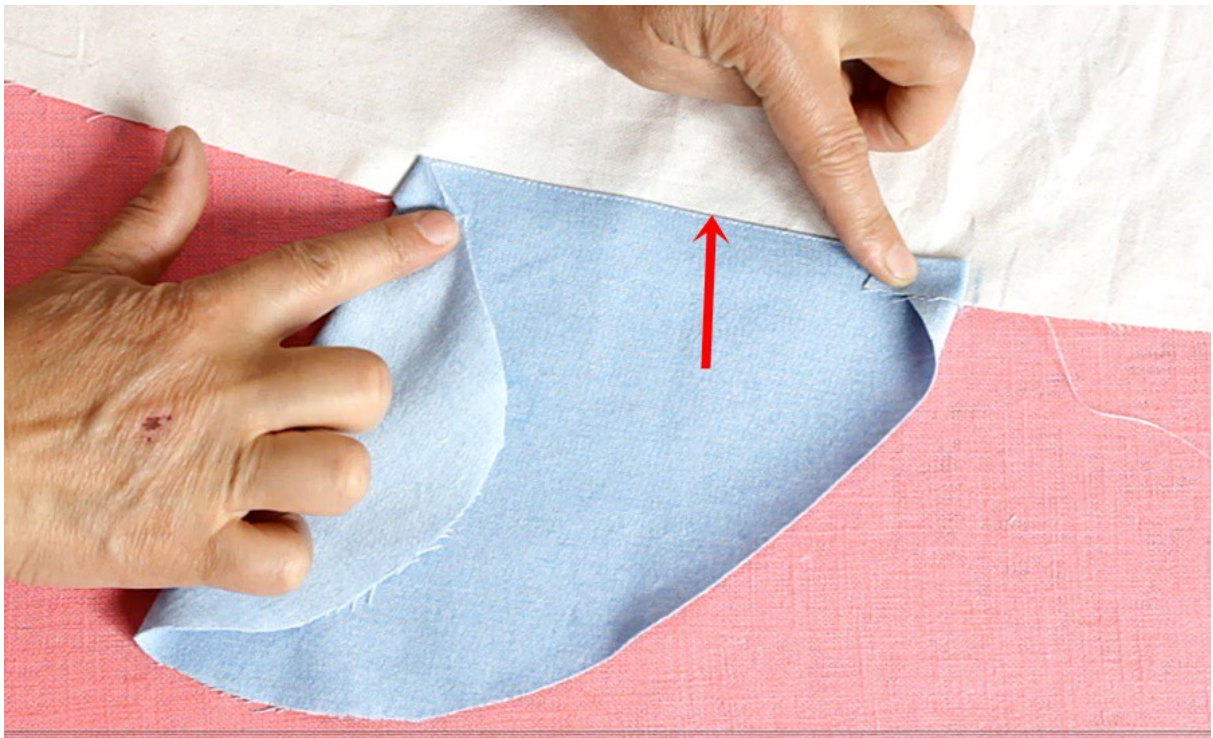
- Place the pocket facing right sides together onto the pocket opening of the front piece
- Stitch along the pocket opening edge
- Carefully trim the seam allowance to reduce bulk and create a cleaner edge



- Clip the seam allowance at both ends of the opening

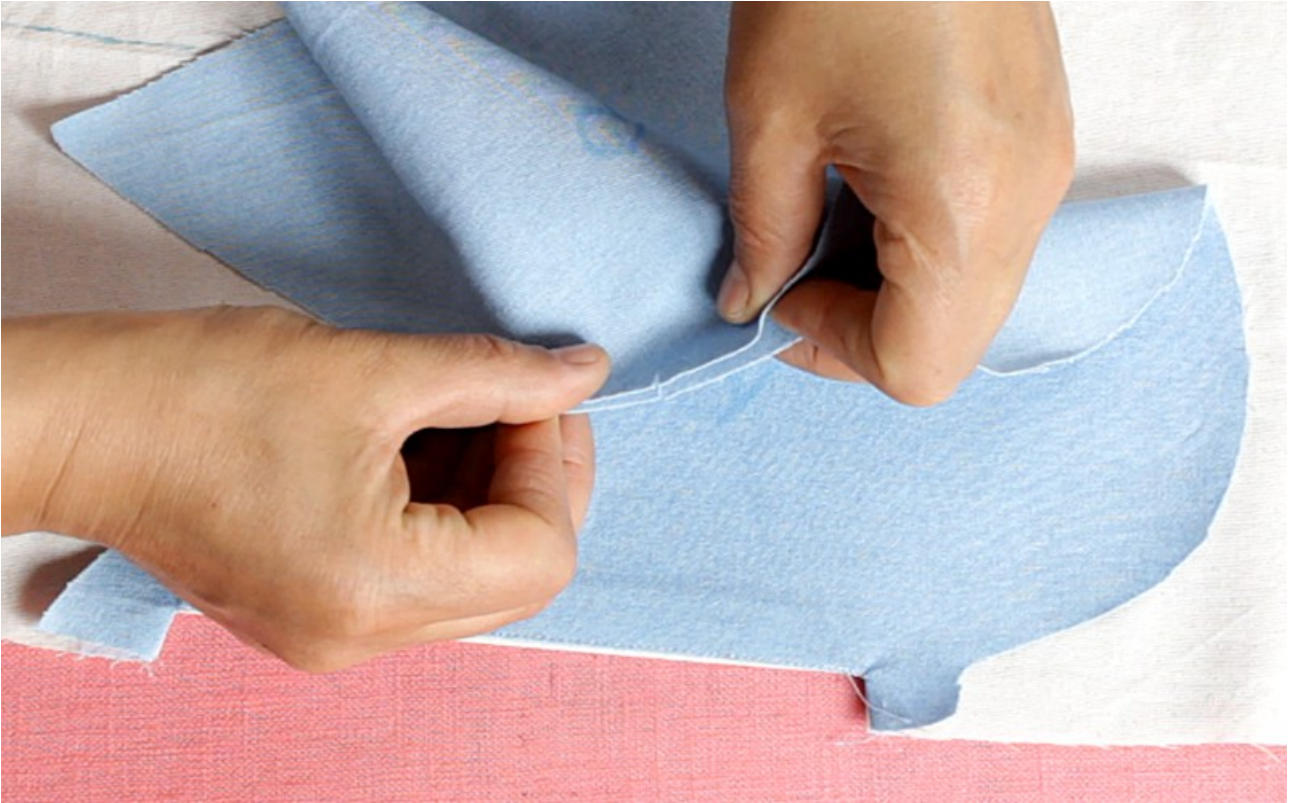


- Turn the pocket facing to the outside
- Press the edge carefully
- Understitch the pocket facing close to the seam allowance  
? This prevents the pocket facing from rolling outward



## 2. Prepare Pocket Bag

- Place the pocket bag wrong sides together onto the pocket facing
- Make sure all edges align precisely



---

## 3. First Seam (French Seam)

- Stitch around the pocket bag with a narrow seam allowance (approx. 5–6 mm / 1/4")

? Important: Leave the pocket opening open



---

#### 4. Trim Seam Allowances

- Trim the seam allowances to approx. 2–3 mm (1/8")
- Clip small notches into curved areas (without cutting into the seam)

? This helps the seam lie smoothly after turning

---

#### 5. Turn and Press

- Turn the pocket bag so that it is right sides together
- Shape the edges neatly
- Press thoroughly



---

#### 6. Second Seam

- Stitch around the pocket bag again with approx. 1 cm (3/8") seam allowance

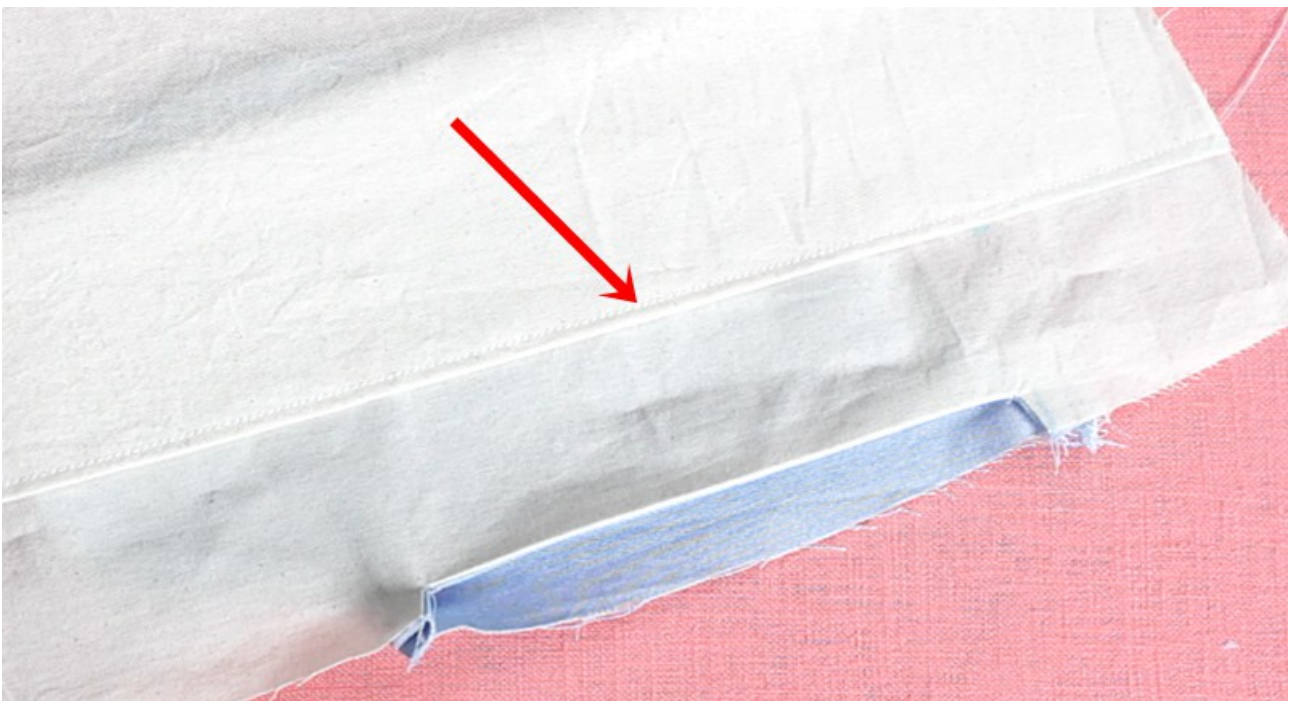
? The raw edges are now fully enclosed inside the seam



---

### Front Pleat

- Press the front pleats into shape
- Topstitch along the pleat fold, 4–10 mm (1/8"–3/8") from the edge, to add structure and definition to the deep pleat
- Secure the pleats at the waistline



---

## ***Step2: Back pants- simple welt pocket***

*(Welt formed from pocket bag, with French seam finish)*

---

### **? Preparation (Pant)**

- Apply interfacing to the wrong side of the fabric in the pocket opening area
- Accurately mark the pocket position and opening lines on the **right side** of the fabric
- Sew the waist dart above the pocket
- Press the dart toward the side seam

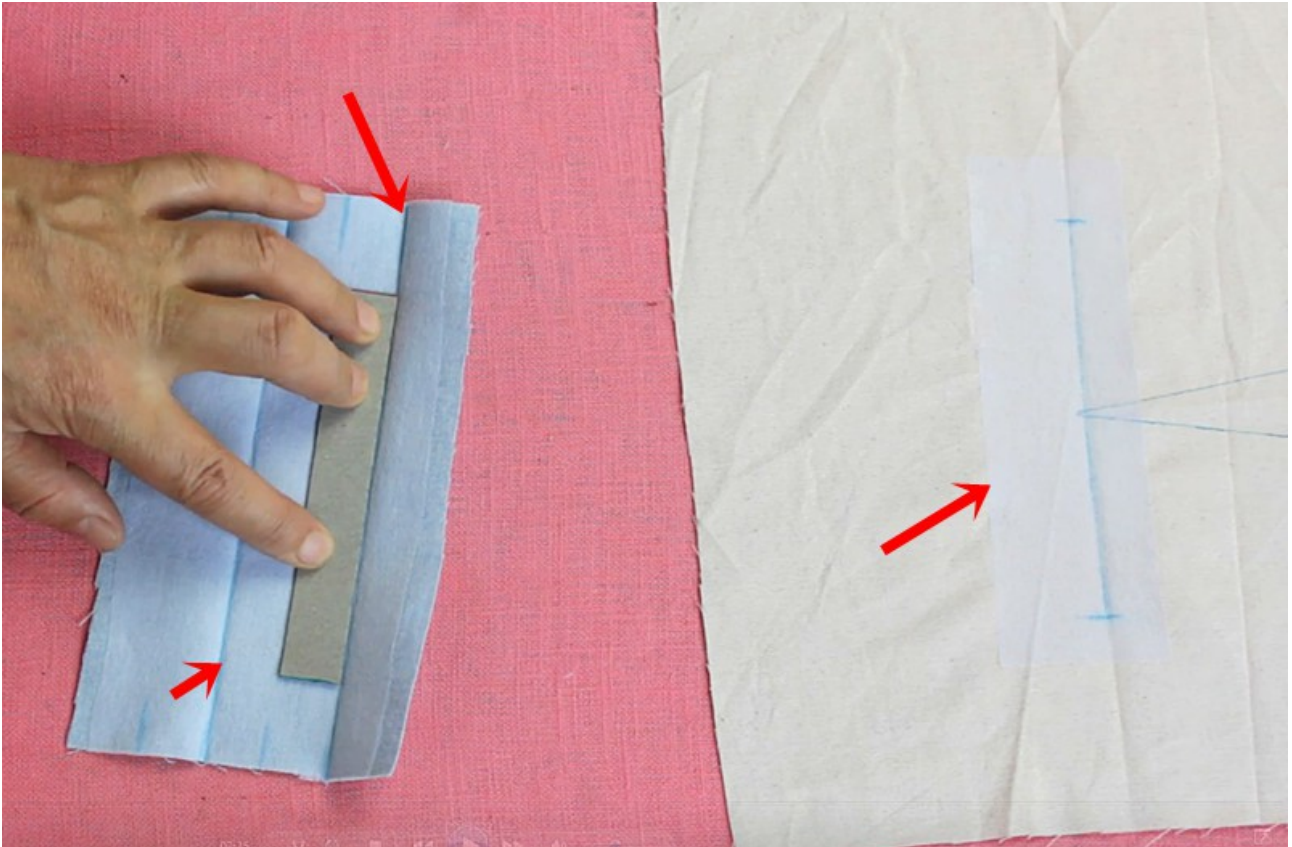


---

### **? Preparation (Pocket Bag)**

- Cut pocket pieces:
  - **Upper pocket bag in self fabric** (to form the welts)
  - **Lower pocket bag in lining fabric**

- Apply interfacing to the upper pocket bag
- Sew upper and lower pocket pieces **right sides together**
- Finish seam allowances and press
- Pre-press the following lines:
  - Pocket opening lines
  - Welt fold line
    - ? This makes the lines visible on the right side and helps with accuracy
- Also mark the pocket opening lines on the wrong side

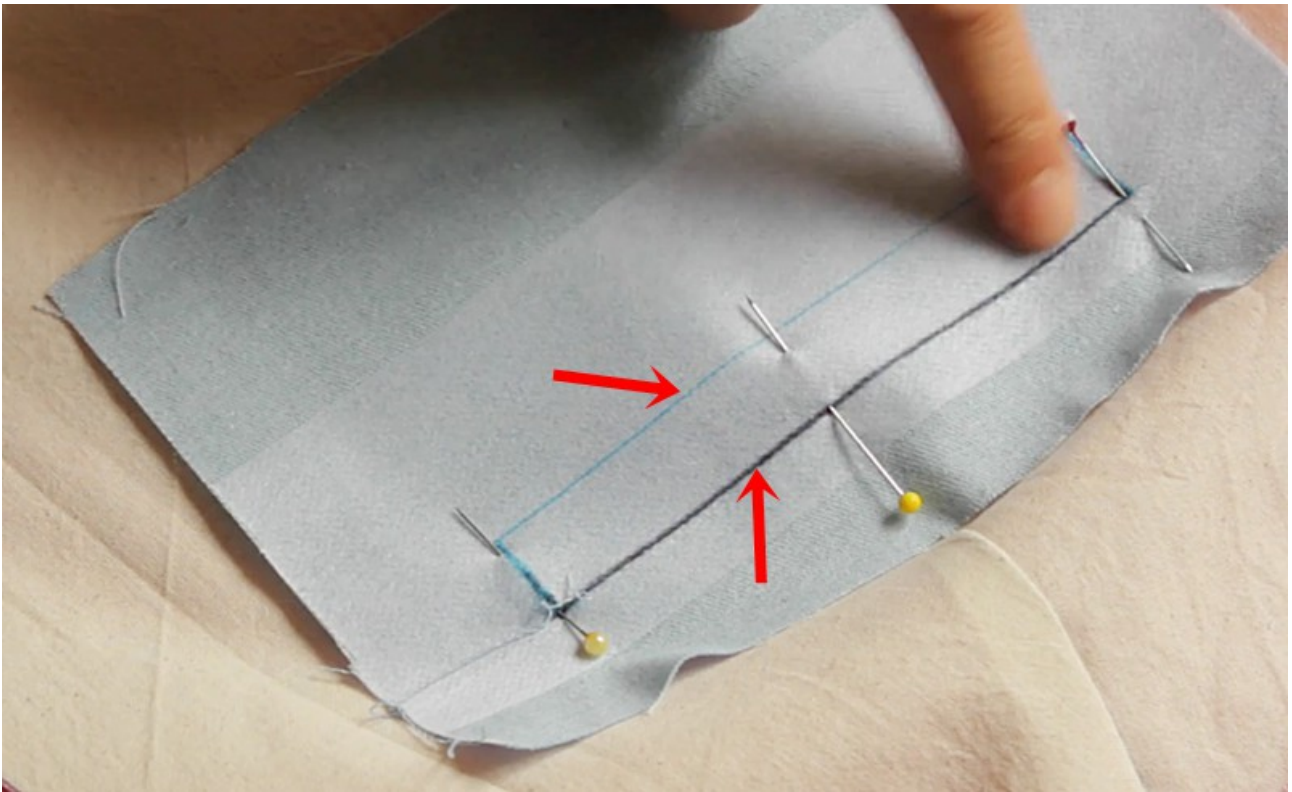



---

## Sew the Pocket

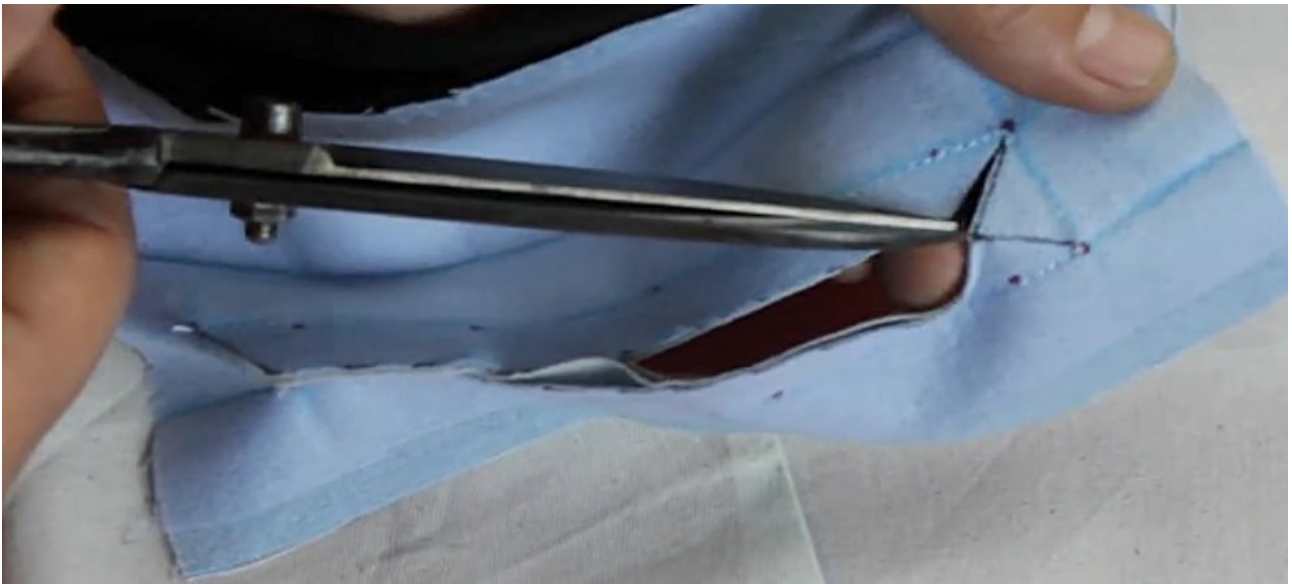
### 1. Attach Pocket

- Place the pocket bag **right sides together** onto the garment
- Stitch along the marked pocket opening lines- 2 parallel lines
- Secure the stitch ends



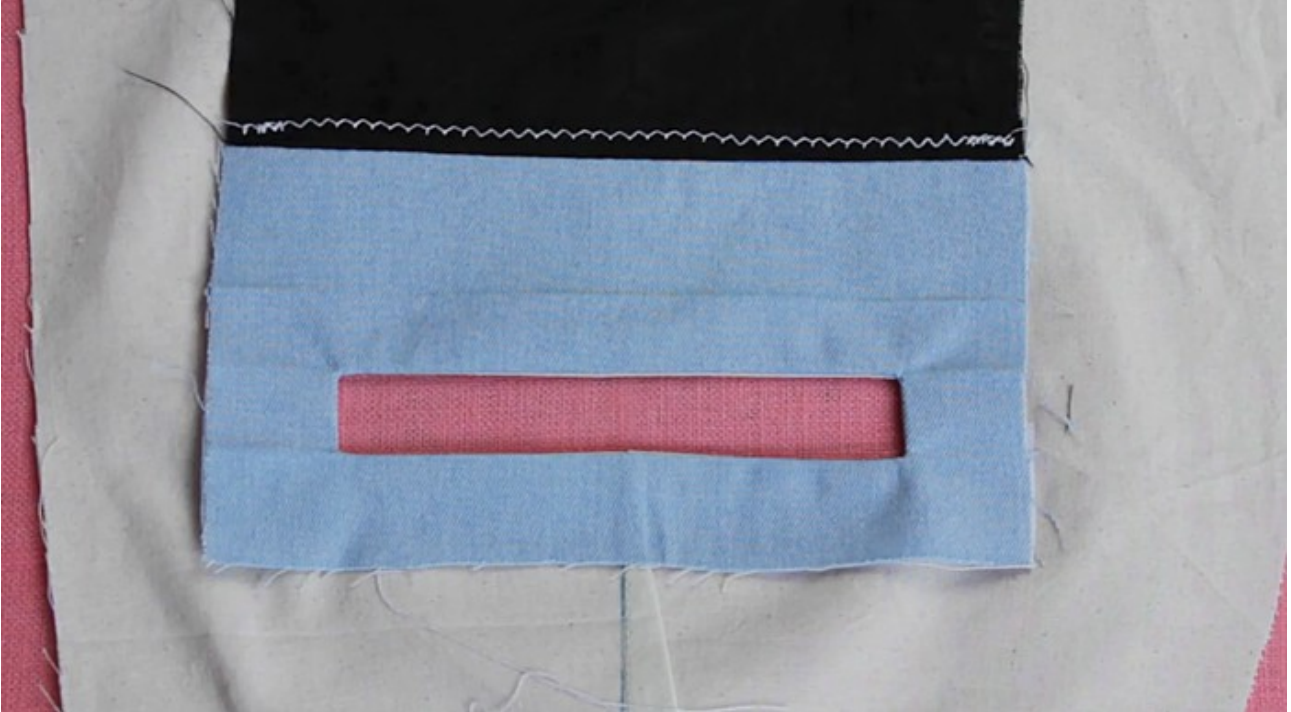
## 2. Cut Opening

- Cut between the stitching lines
- At each end, cut diagonally up to (but not into) the stitching (**Y-cut**)  
? Do not cut into the seams



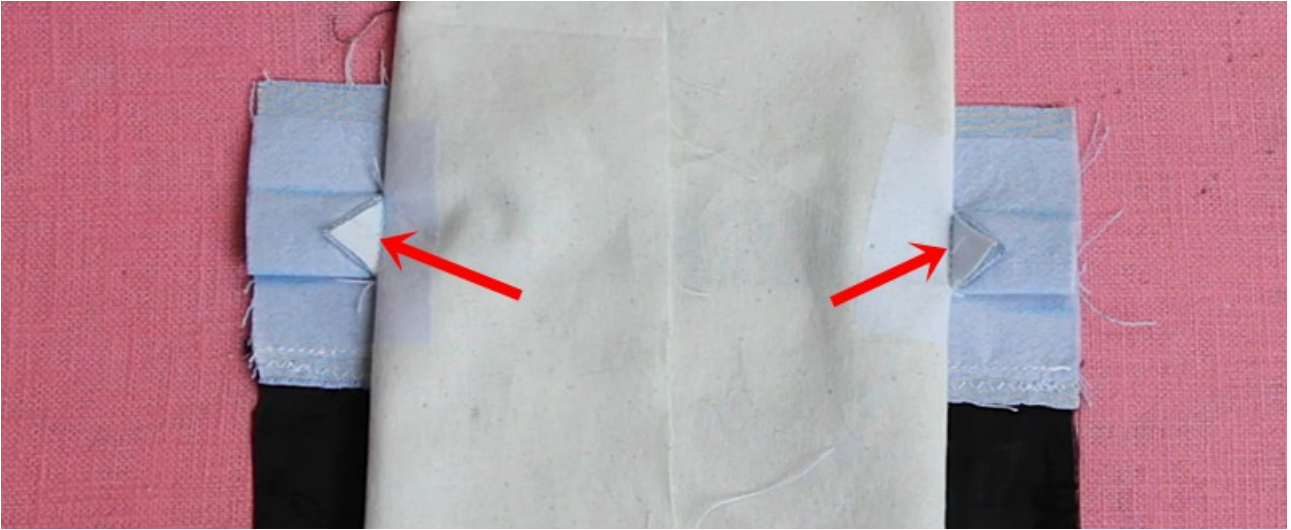
### 3. Turn & Form Welts

- Turn the pocket bag to the inside
- Use the pressed fold lines to shape the welts neatly
- Press carefully



- On the wrong side, stitch the small triangular seam allowances at both ends ? This secures the welt





#### 4. Close Pocket Bag (French Seam)

- Fold the lower pocket bag upward



- Place the pocket bag wrong sides together and align
- ? The garment is folded neatly inside the pocket bag
- Stitch the first seam with approx. 1 cm (3/8") seam allowance



- Trim seam allowances and clip corners
- Turn the garment through the pocket opening

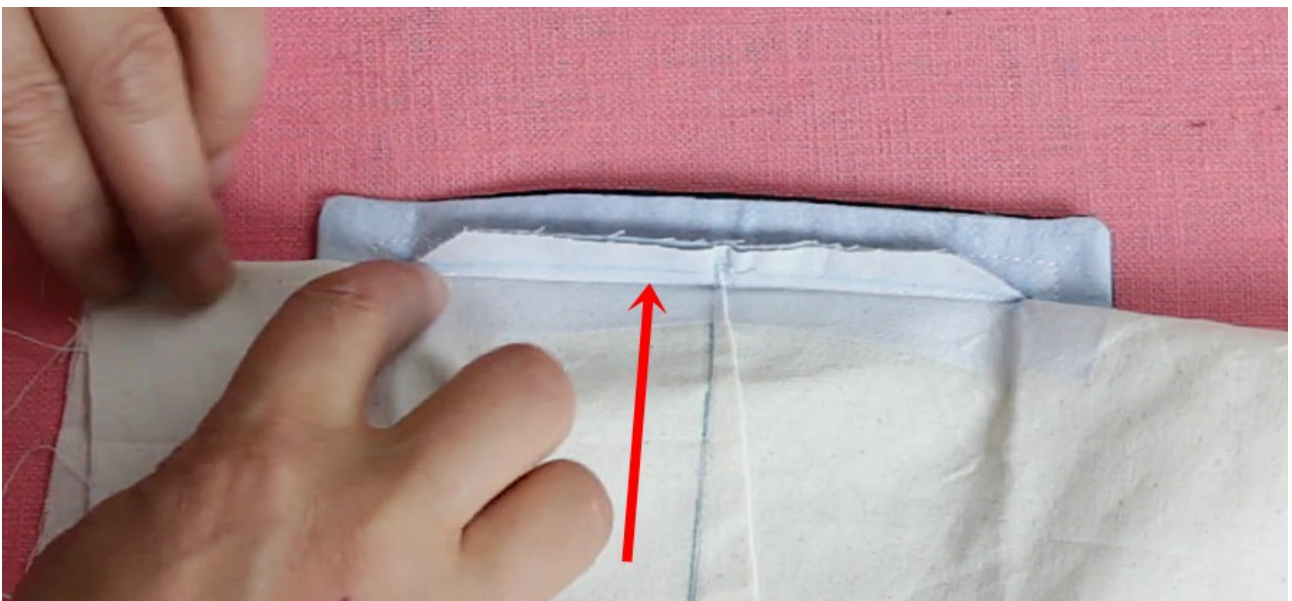


- Shape carefully and press
- Stitch the second seam with approx. 1 cm (3/8") seam allowance  
? All raw edges are now fully enclosed



## 5. Finishing

- Press the pocket bag downward
- From the wrong side, stitch along the upper edge of the pocket opening



- From the right side, topstitch along both sides and above the pocket opening to secure



---

### ? Tips

- Precision is essential when sewing welt pockets
- Press carefully after each step for clean results
- Baste first if needed for better control

---

## ***Step3: Finish the pant legs***

### **Side Seam**

- Place the front and back pant pieces right sides together
- Stitch the side seam closed

? Do not stitch across the pocket opening!

- Finish the seam allowances with bias binding

---

### **Inseam**

- Place the front and back pant pieces right sides together
- Stitch the inseam closed
- Finish the seam allowances with bias binding

---

## ***Step4: Crotchseam and zipper***

### **Crotch Seam (Joining Both Pant Legs)**

- Turn one pant leg right side out
- Insert it into the other pant leg so that the pieces are right sides together

? The crotch seams should now align exactly

- Stitch the crotch seam in one continuous seam, starting at the center back and ending at the bottom of the zipper opening
- Clip the seam allowance at the corner of the shorter zipper facing



? This makes it easier to finish the seam allowance with bias binding later

- Finish the entire seam allowance with bias binding — from the center back to the front waist edge, including the curved facing . Baste would help here!



## Zipper Construction

(Please take a look at my zipper video tutorial! It's much easier to show the process than to explain it in words. )

Tutorial-S29: <https://youtu.be/0tdr75FT2E>

### 1. Attach Right Side of Zipper

- Place the zipper right sides together underneath the right front pant piece
  - The zipper teeth should align exactly with the fold line
  - Pin in place and stitch close to the zipper teeth using a zipper foot
  - Fold inward and press
- 

### 2. Prepare Underlap (Fly Shield)

- Place the underlap right sides together, stitch if required, turn and press
  - Position the underlap underneath the zipper on the left side
- 

### 3. Attach Left Side

- Lay the left front pant piece over the zipper

? Make sure the zipper is fully covered and aligned neatly

- From the inside, pin and stitch the zipper together with the underlap
- 

### 4. Topstitch

- From the right side, sew the typical curved or straight topstitching line

? This secures both the zipper and the underlap

---

### 5. Bar Tack

- Sew a horizontal bar tack at the lower end of the zipper

? This reinforces the zipper opening and prevents tearing

---

## **Step5: Sewing waistband**

### **Preparation**

- Reinforce the waistband with interfacing.
- Fold lengthwise and press so it already takes shape.
- Press the seam allowance of the inner waistband edge to the inside.



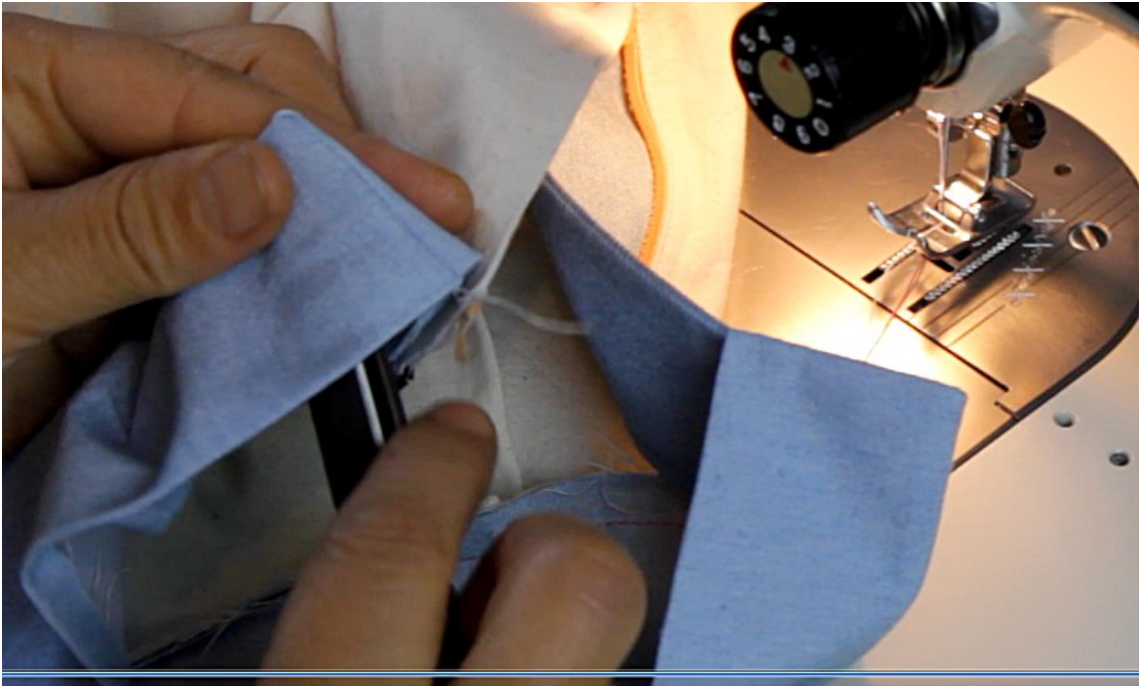
- Check the waistband edge of the trousers and ensure the curve/line is even.
  - Carefully arrange pockets and seam allowances into position.
- 

### **Attaching the Waistband**

- Pin the outer waistband right sides together to the top edge of the pant.
- Stitch the waistband in place.



- Close the waistband at the side seams.
- Trim seam allowances at the corners and turn the waistband right side out.



- Press seam allowances into the waistband.
- Align the already pressed edge carefully and topstitch close to the edge from the right side.
- Shape and press well.



## Buttonhole and Button

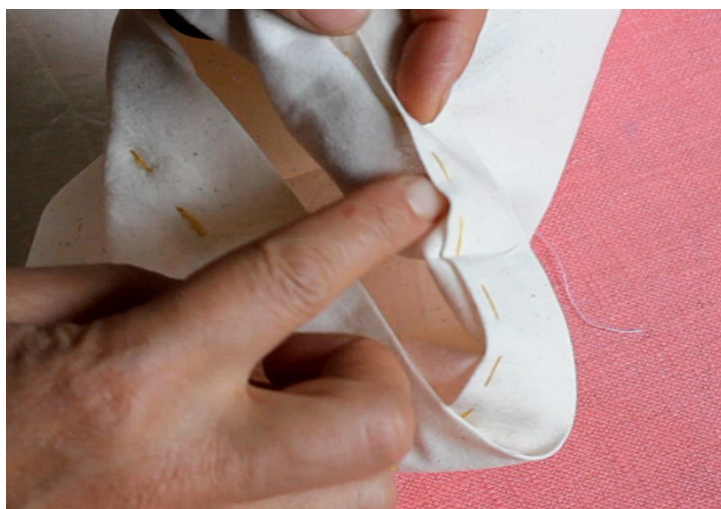
- Work a buttonhole on the overlapping waistband.
  - Sew the button on the opposite side.
- 

### ***Step 6: Sew the pant hem***

- Check the hem width and adjust if necessary.
- Press the hem allowance to the inside so the hem sits smoothly in shape.
- Fold the seam allowance evenly to the inside.
- Turn the hem to the inside and press carefully.
- Secure with pins or, preferably, baste in place.



- Sew invisibly by hand using a blind stitch, or  
(Video Tutorial S30) <https://youtu.be/aSSTUf8w3ZE>
- Topstitch close to the edge using the sewing machine.



## **Important to know!**

### **Fabric preparation:**

---

- Pre-washing the fabric to prevent later shrinkage
- For fabrics that cannot be pre-washed, use steam ironing to pre-shrink them
- Press the fabric before cutting to remove any creases or wrinkles
- Extra fabric may be required for matching plaids, stripes, or one-way design fabrics (directional prints). This also applies to fabrics with a nap, such as velvet
- Additional fabric is needed if you deviate from the cutting layout, for example, when cutting on the cross - grain

### **Pattern preparation:**

---

- Save the digital patterns to your computer
- To open the files, you will need the free Adobe Acrobat Reader
- Print the pattern at 100% scale (actual size) without any scaling or fit to page settings.
- Pattern print is available in DinA4, DinA0, and US Letter formats
- Print the first page first to check the 10cm x 10cm test square and measure it to ensure the scale is correct

### **Symbols:**

---

- Solid line : seam allowances
- Dashed line(- - - - -): seam line, and pleats, tucks and hemline
- HM – Center back
- VM – Center front
- Arrow(→): Grainline
- Triangle mark: Zipper placement (end or start of zipper)
- Dot mark: Button position
- Scissor: Cutting line for facing pieces, lining pieces, or patchwork
- Letters: matching points